

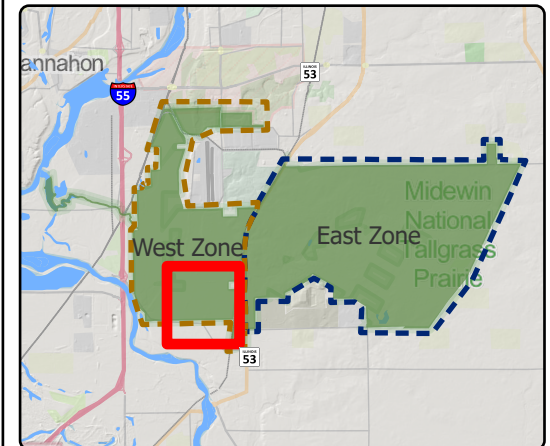
## South Patrol 2

Lat:41.3428

Long:-88.148598

Acres:266.82

	Burn Unit		Pipeline
	Eagles Nests - Sensitive Area		Barbed Wire
	Native Vegetation - Sensitive Area		Chain Link
	Drop Point		Woven Wire
	Lock/Gate		Army Inholding
	Road		Adjacent Land
	Trail		Creek As Completed Line
	Railroad		Mow Line
			Railroad As Completed Line
			Road As Completed Line



Midwin National Tallgrass Prairie  
 Prairie Supervisor's Office and Welcome Center  
 30239 S. State Route 53  
 Wilmington, IL 60481  
 Phone: (815) 423 - 6370