

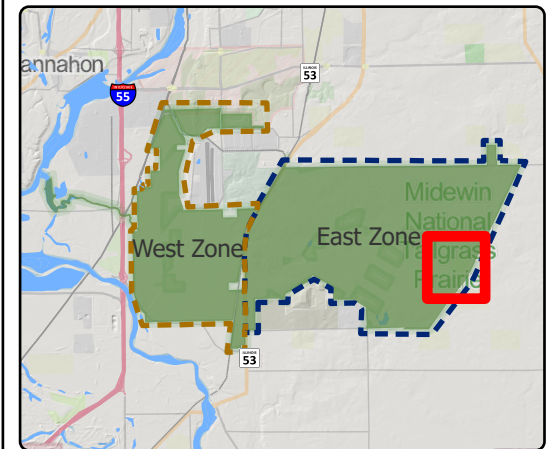
Tract 5

Lat:41.358101

Long:-88.031998

Acres:394.57

Burn Unit	Pipeline
Drop Point	Barbed Wire
Entry Point	Chain Link
Hole In Fence	Woven Wire
Lock/Gate	Army Inholding
Road	Adjacent Land
Well	Hand Line
HighTransmission Line	Mow Line
	Road As Completed Line
	Wet Line



Midwin National Tallgrass Prairie
 Prairie Supervisor's Office and Welcome Center
 30239 S. State Route 53
 Wilmington, IL 60481
 Phone: (815) 423 - 6370