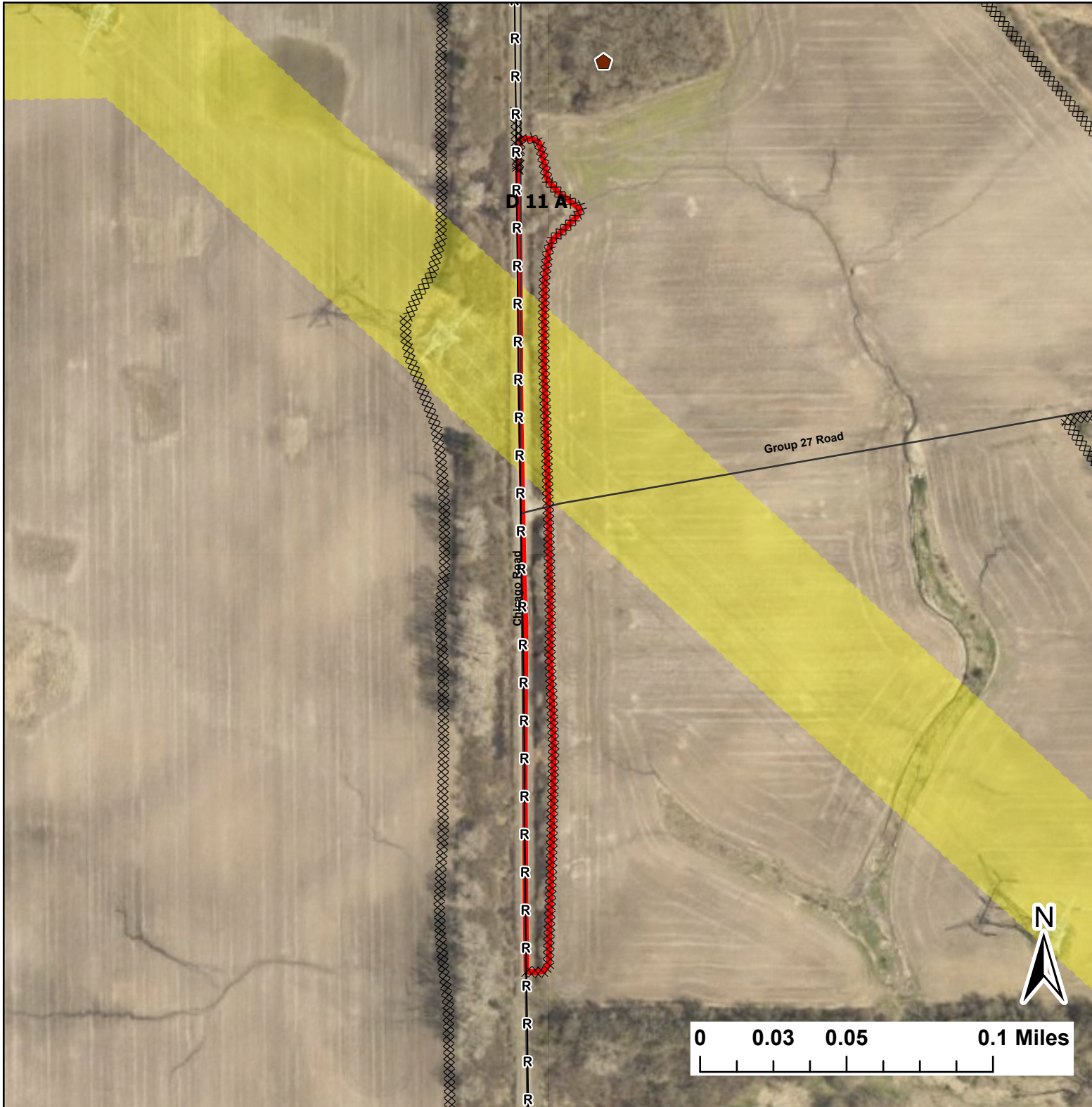


**D 11 A**

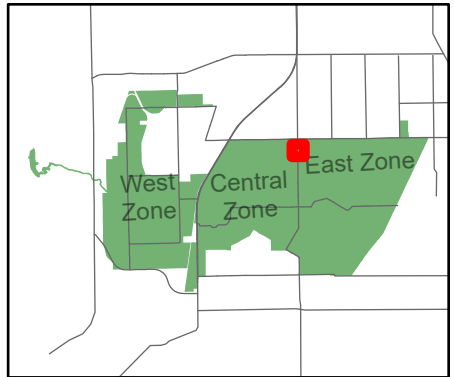
Lat:41.389099  
Long:-88.077202

Acres:1.69



**Legend**

- Burn Unit
- Buildings
- High Transmission Line
- Mow Line
- Road As Completed Line
- Road



Midwin National Tallgrass Prairie  
Prairie Supervisor's Office and Welcome Center  
30239 S. State Route 53  
Wilmington, IL 60481  
Phone: (815) 423 - 6370