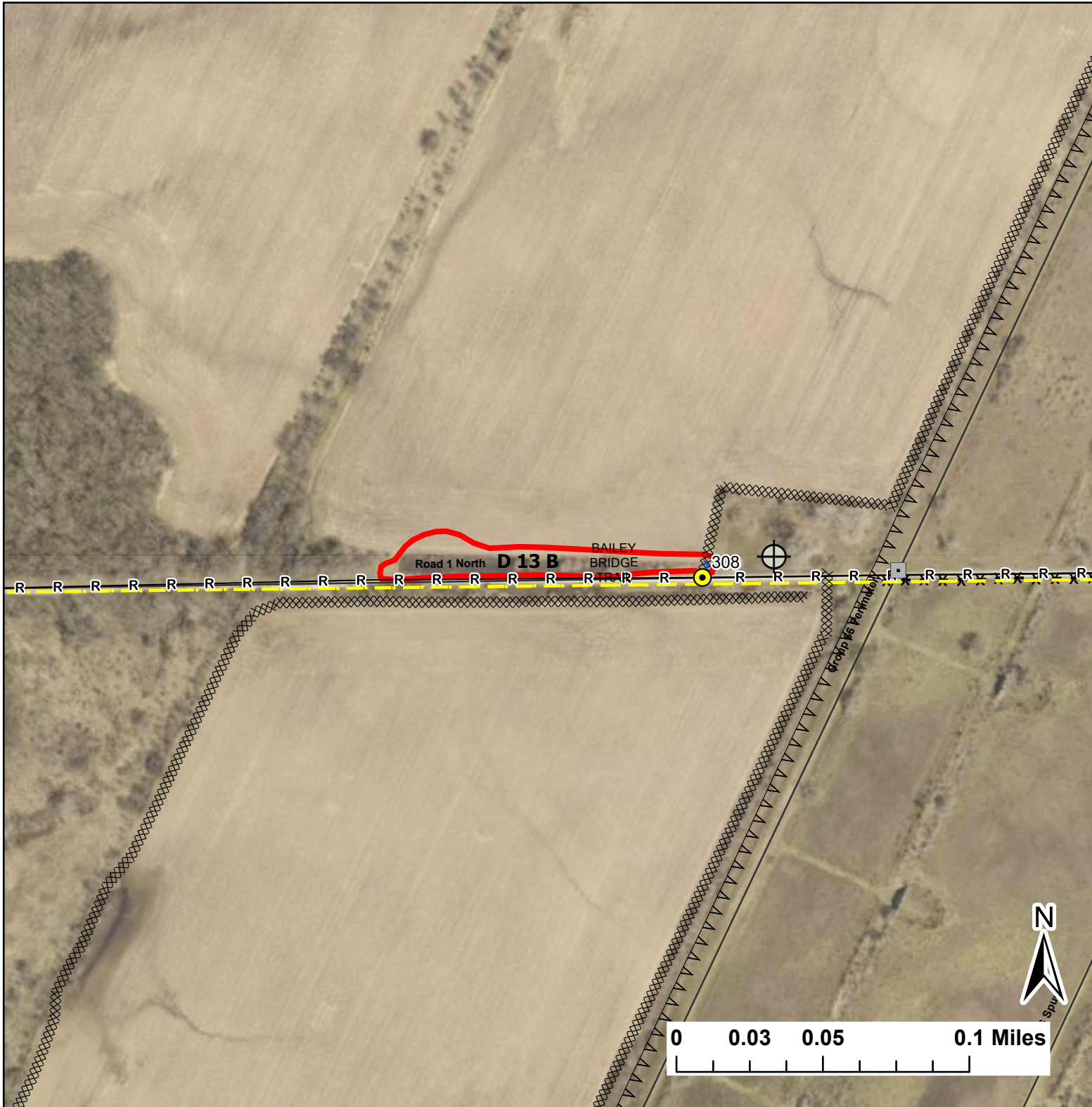


D 13 B

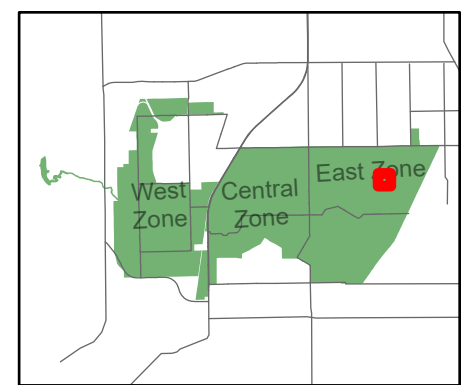
Lat:41.380299
Long:-88.0345

Acres:0.68



Legend

- Burn Unit
- Drop Point
- Lock/Gate
- Well
- Barbed Wire
- Chain Link
- Trail
- Mow Line
- Road As Completed Line
- Wet Line
- Road



Midwin National Tallgrass Prairie
Prairie Supervisor's Office and Welcome Center
30239 S. State Route 53
Wilmington, IL 60481
Phone: (815) 423 - 6370