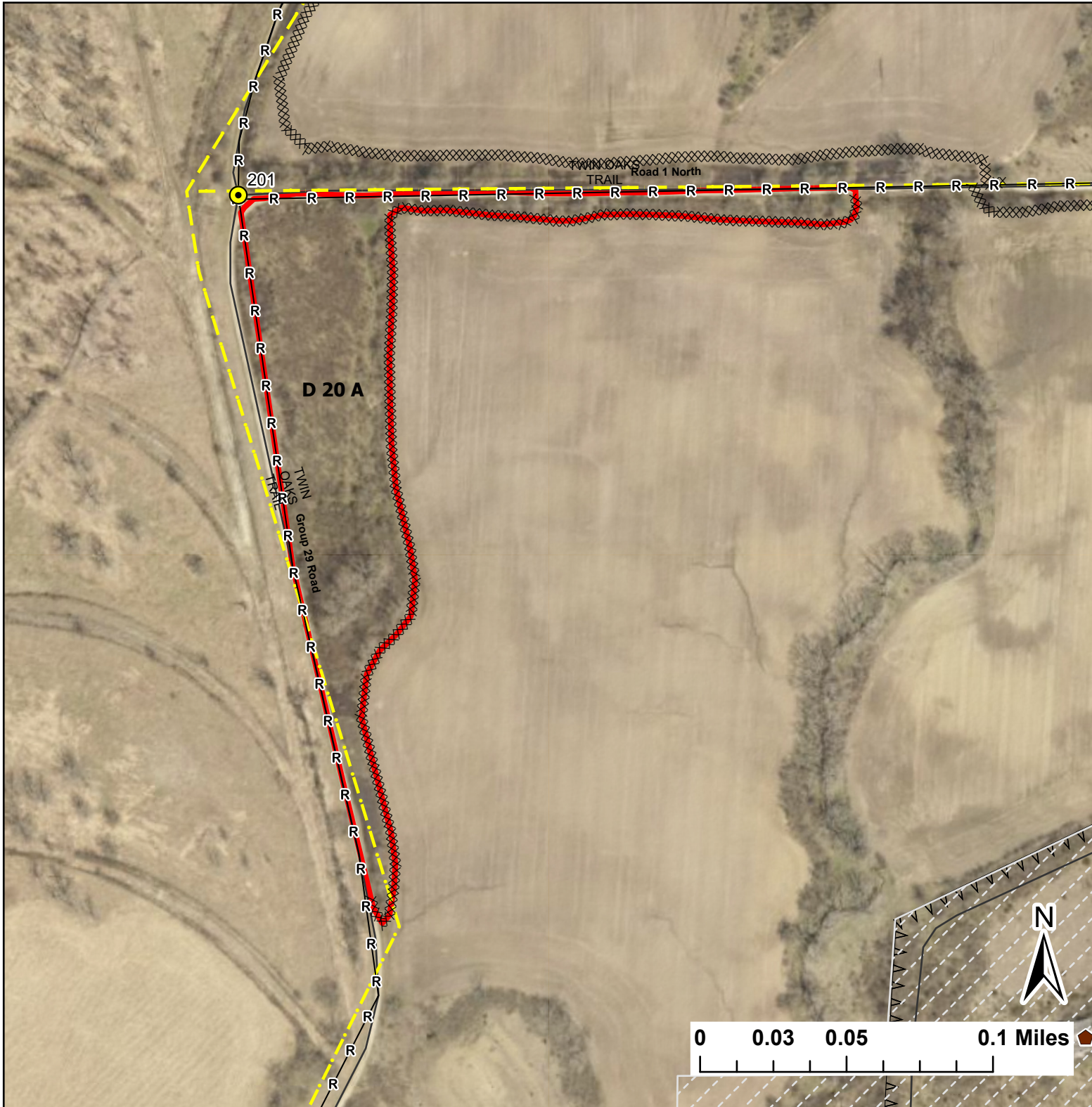


D 20 A

Lat:41.377998

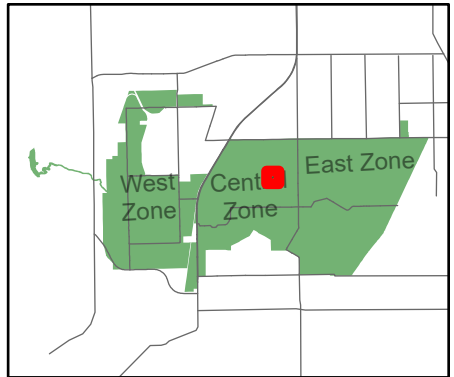
Long:-88.0924

Acres:5.81



Legend

- Burn Unit
- Buildings
- Drop Point
- Chain Link
- Trail
- Mow Line
- Road As Completed Line
- Army Inholding
- Road



Midwin National Tallgrass Prairie
Prairie Supervisor's Office and Welcome Center
30239 S. State Route 53
Wilmington, IL 60481
Phone: (815) 423 - 6370