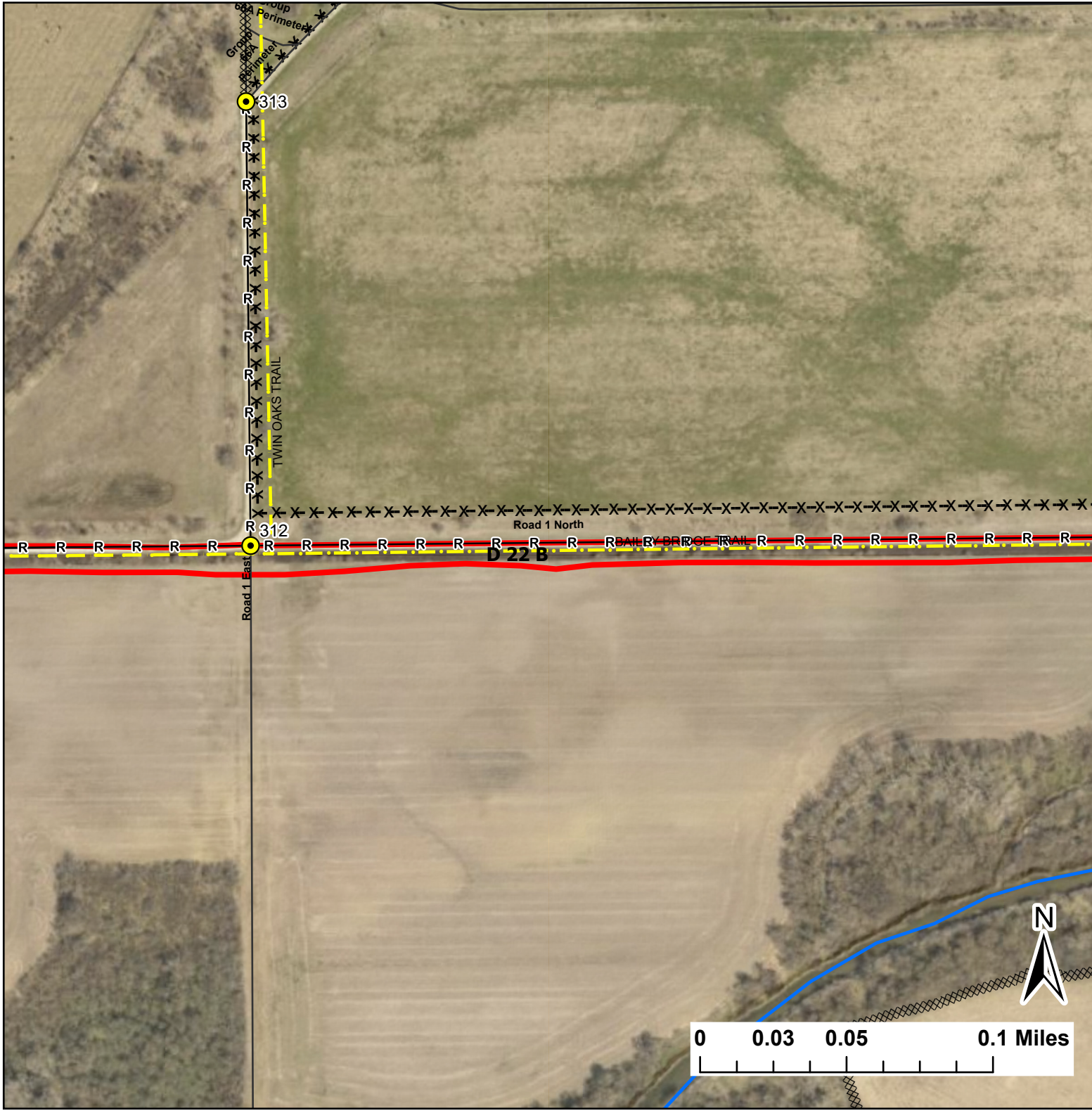


D 22 B

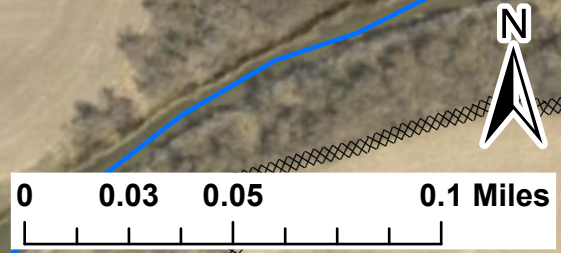
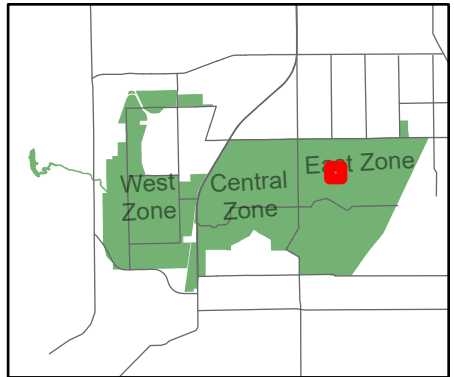
Lat:41.3797
Long:-88.055801

Acres:2.28



Legend

- Burn Unit
- Drop Point
- Barbed Wire
- Trail
- Creek As Completed Line
- Mow Line
- Road As Completed Line
- Road



Midwin National Tallgrass Prairie
Prairie Supervisor's Office and Welcome Center
30239 S. State Route 53
Wilmington, IL 60481
Phone: (815) 423 - 6370