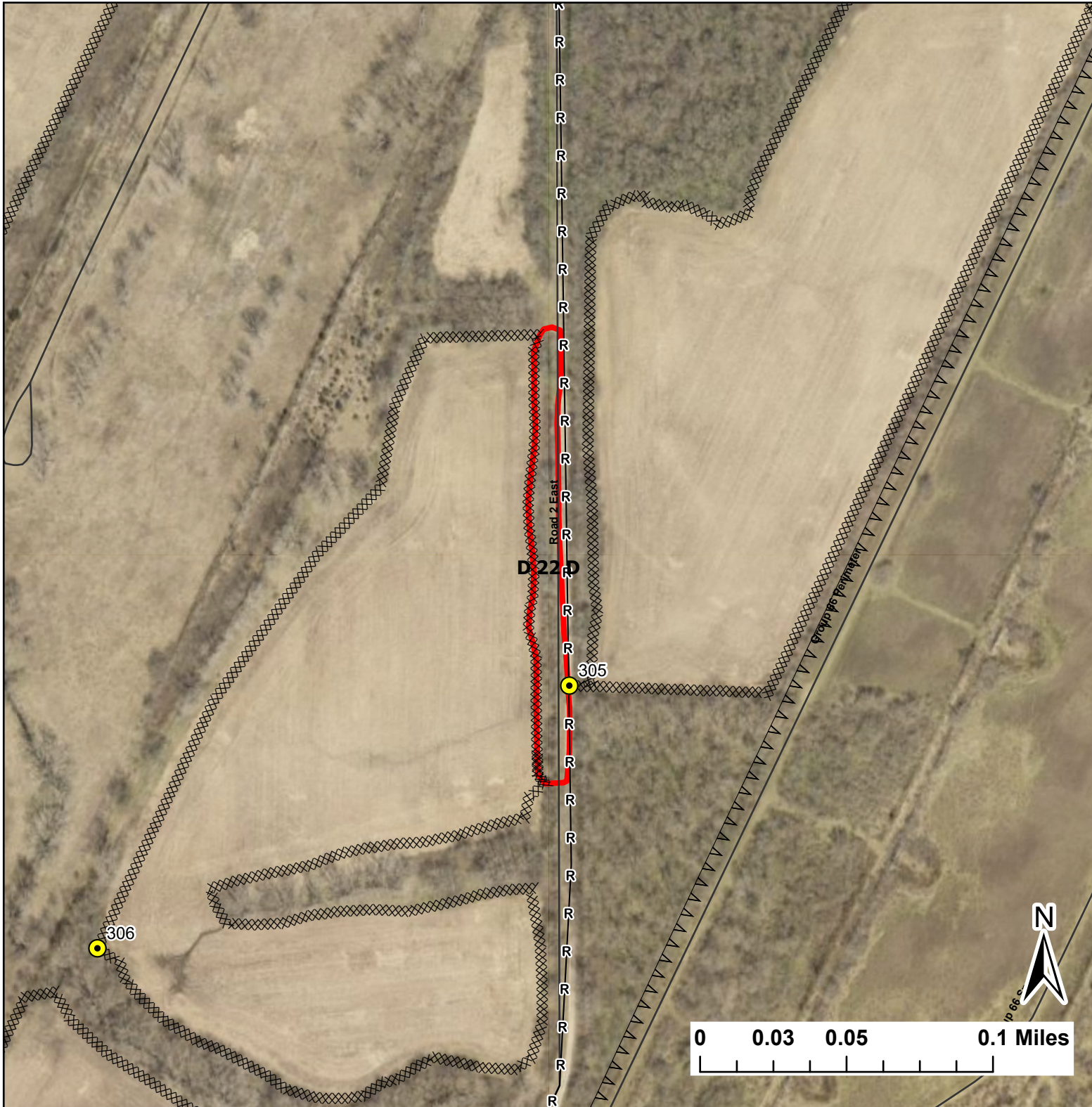


**D 22 D**

Lat:41.3736

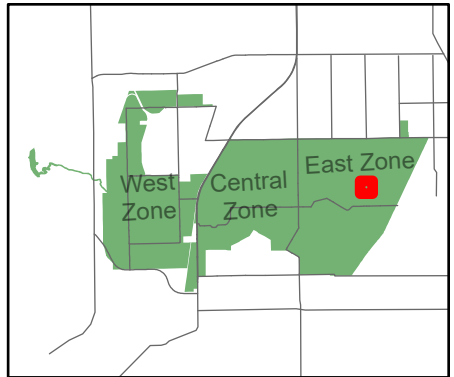
Long:-88.0382

Acres:0.97



**Legend**

- Burn Unit
- Drop Point
- Chain Link
- Mow Line
- Road As Completed Line
- Road



Midwin National Tallgrass Prairie  
Prairie Supervisor's Office and Welcome Center  
30239 S. State Route 53  
Wilmington, IL 60481  
Phone: (815) 423 - 6370