

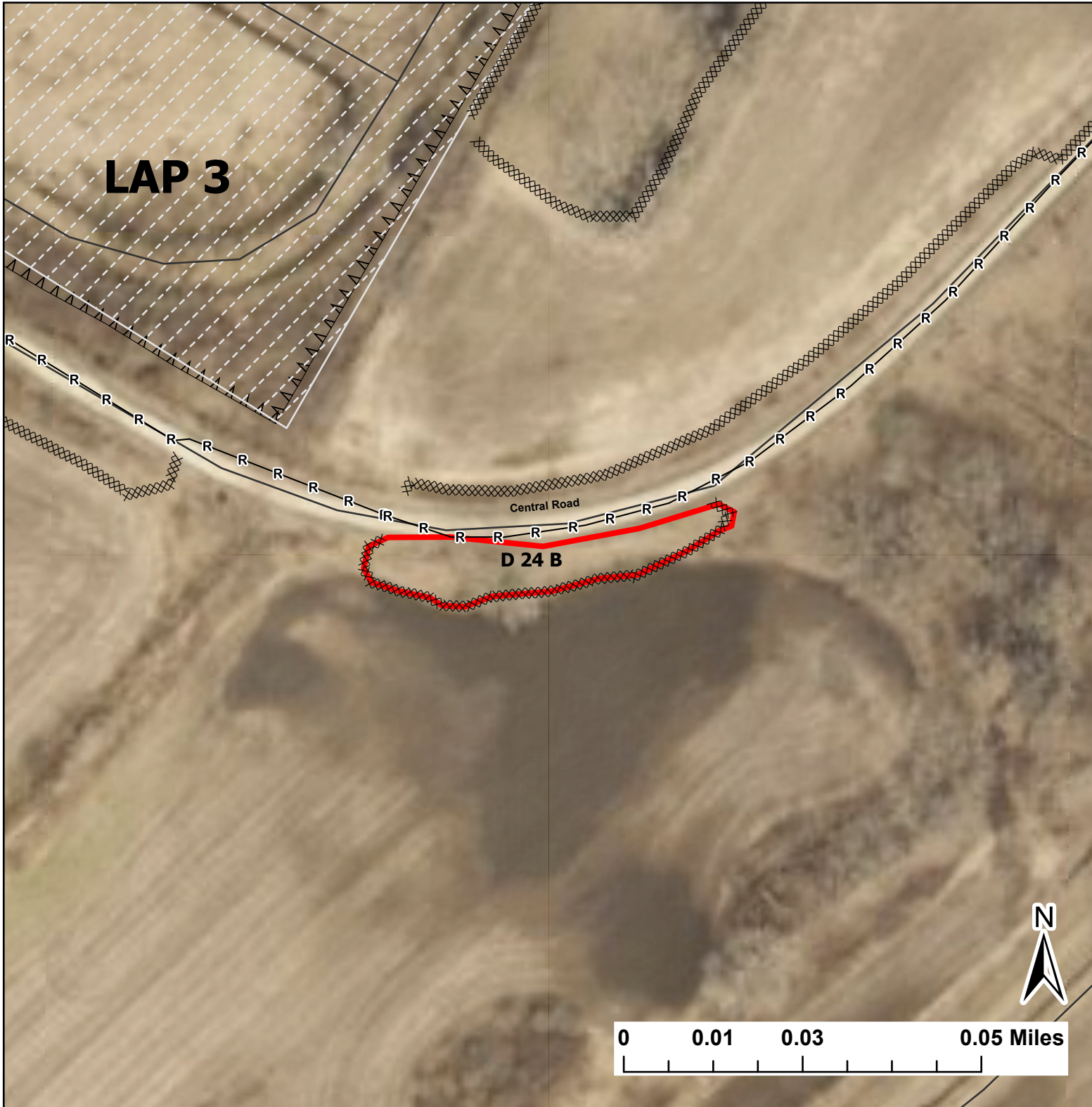
D 24 B

Lat:41.3638


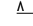




Long:-88.048599

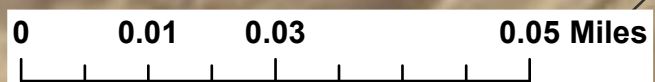
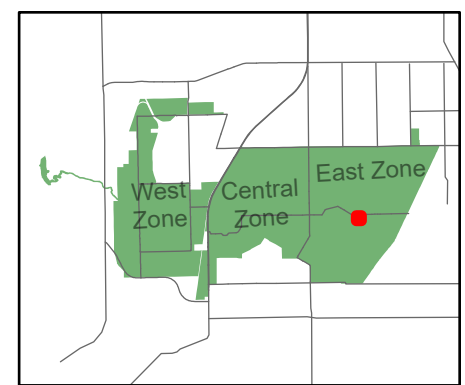
Acres:0.22

LAP 3



Legend

-  Burn Unit
-  Chain Link
-  Mow Line
-  Road As Completed Line
-  Army Inholding
-  Road



Midwin National Tallgrass Prairie
Prairie Supervisor's Office and Welcome Center
30239 S. State Route 53
Wilmington, IL 60481
Phone: (815) 423 - 6370