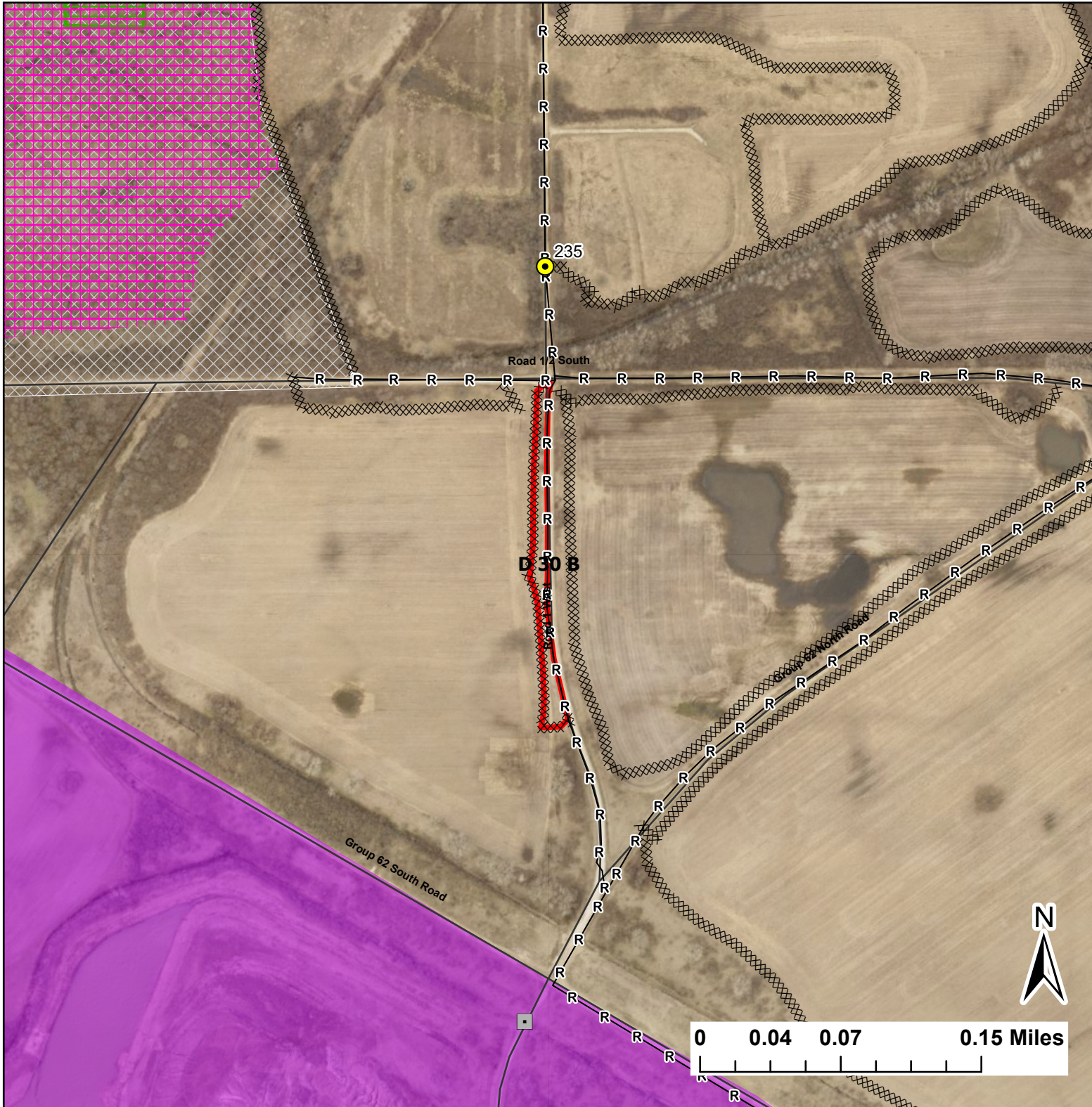


D 30 B

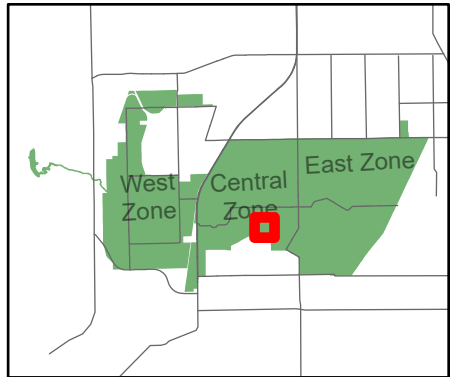
Lat:41.3559
Long:-88.095596

Acres:0.86



Legend

- Burn Unit
- Cemetery
- Drop Point
- Lock/Gate
- Native Vegetation - Sensitive Area
- UXO Closed Area
- Adjacent Land
- Mow Line
- Road As Completed Line
- Road



Midwin National Tallgrass Prairie
Prairie Supervisor's Office and Welcome Center
30239 S. State Route 53
Wilmington, IL 60481
Phone: (815) 423 - 6370