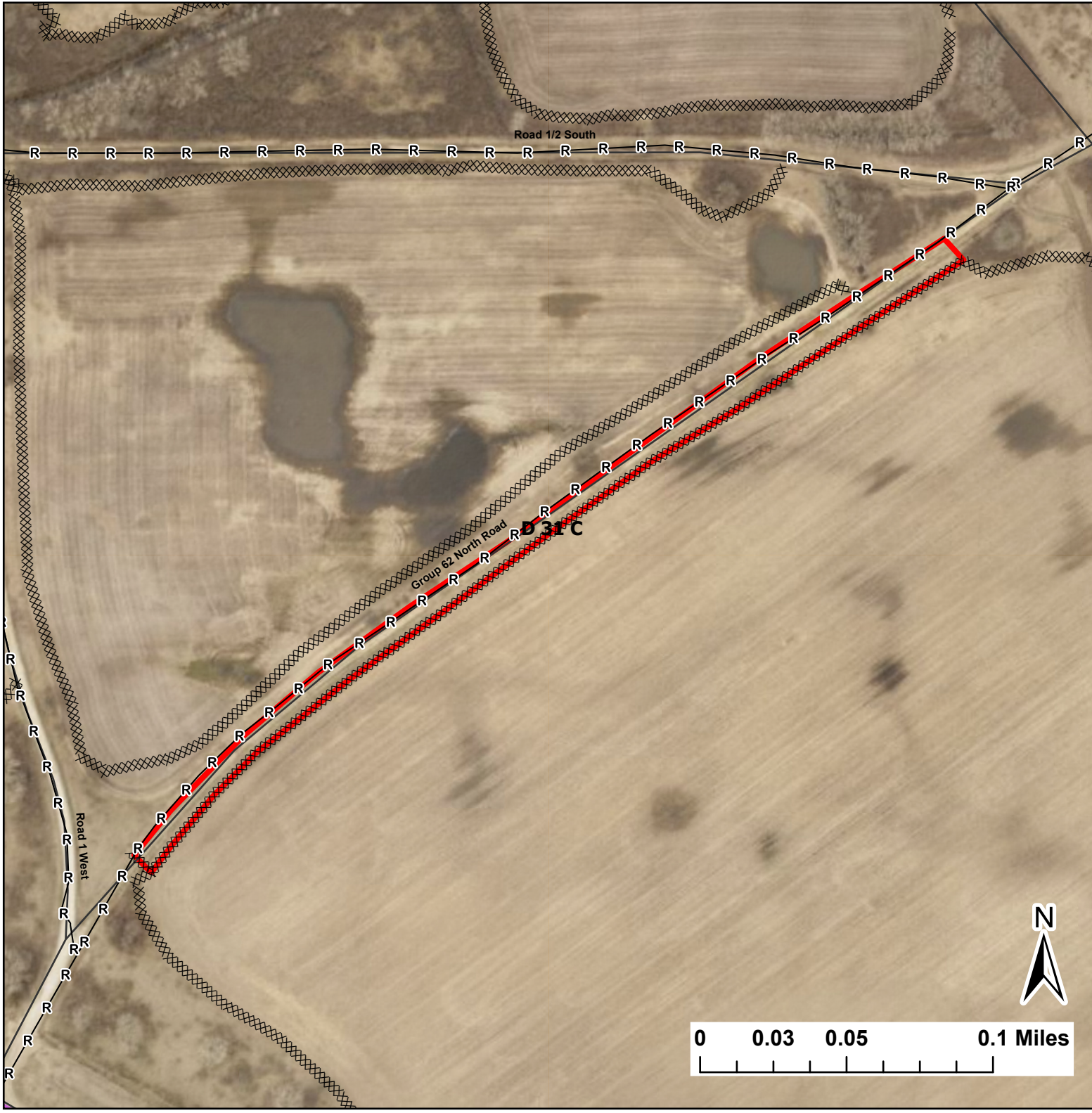


# D 31 C

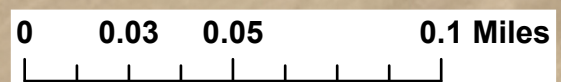
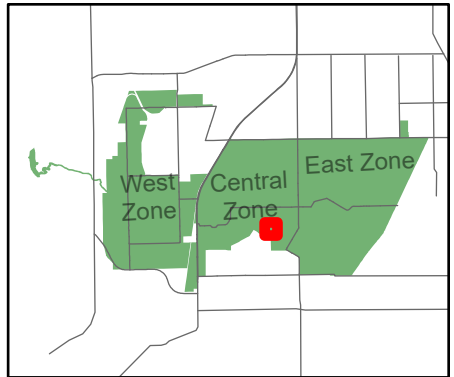
Lat:41.355499  
Long:-88.091797

Acres:1.81



**Legend**

- Burn Unit
- Adjacent Land
- Mow Line
- Road As Completed Line
- Road



Midwin National Tallgrass Prairie  
Prairie Supervisor's Office and Welcome Center  
30239 S. State Route 53  
Wilmington, IL 60481  
Phone: (815) 423 - 6370