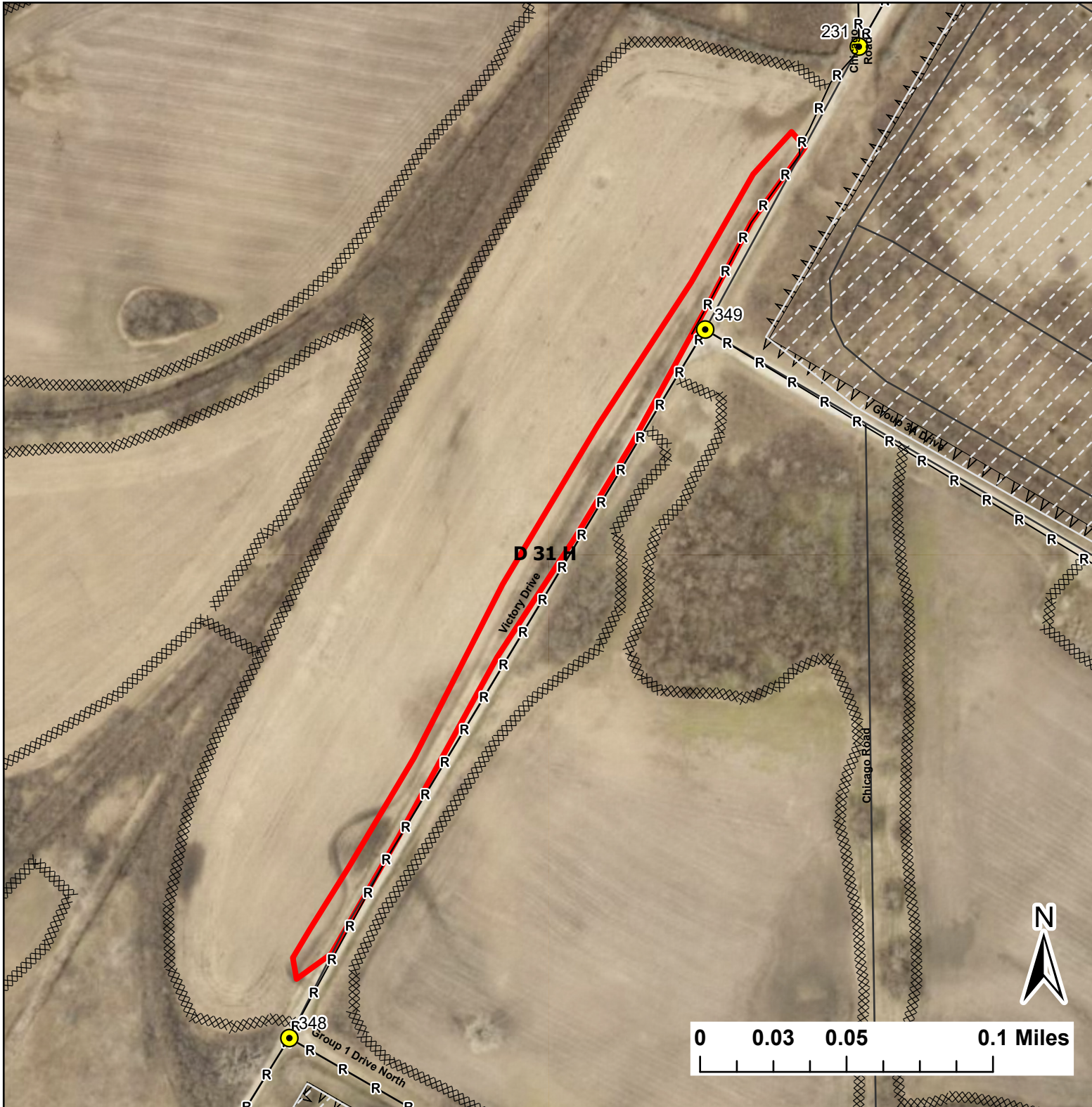


# D 31 H

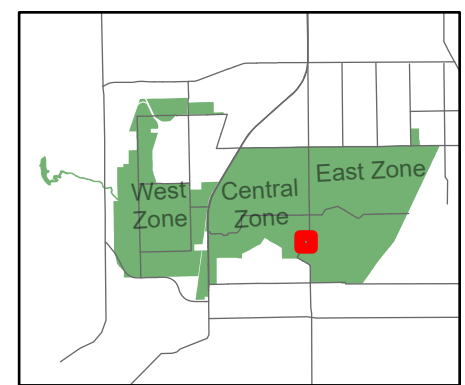
Lat:41.353401  
Long:-88.0783

Acres:2.15



### Legend

- Burn Unit
- Drop Point
- Chain Link
- Mow Line
- Road As Completed Line
- Army Inholding
- Road



Midwin National Tallgrass Prairie  
Prairie Supervisor's Office and Welcome Center  
30239 S. State Route 53  
Wilmington, IL 60481  
Phone: (815) 423 - 6370