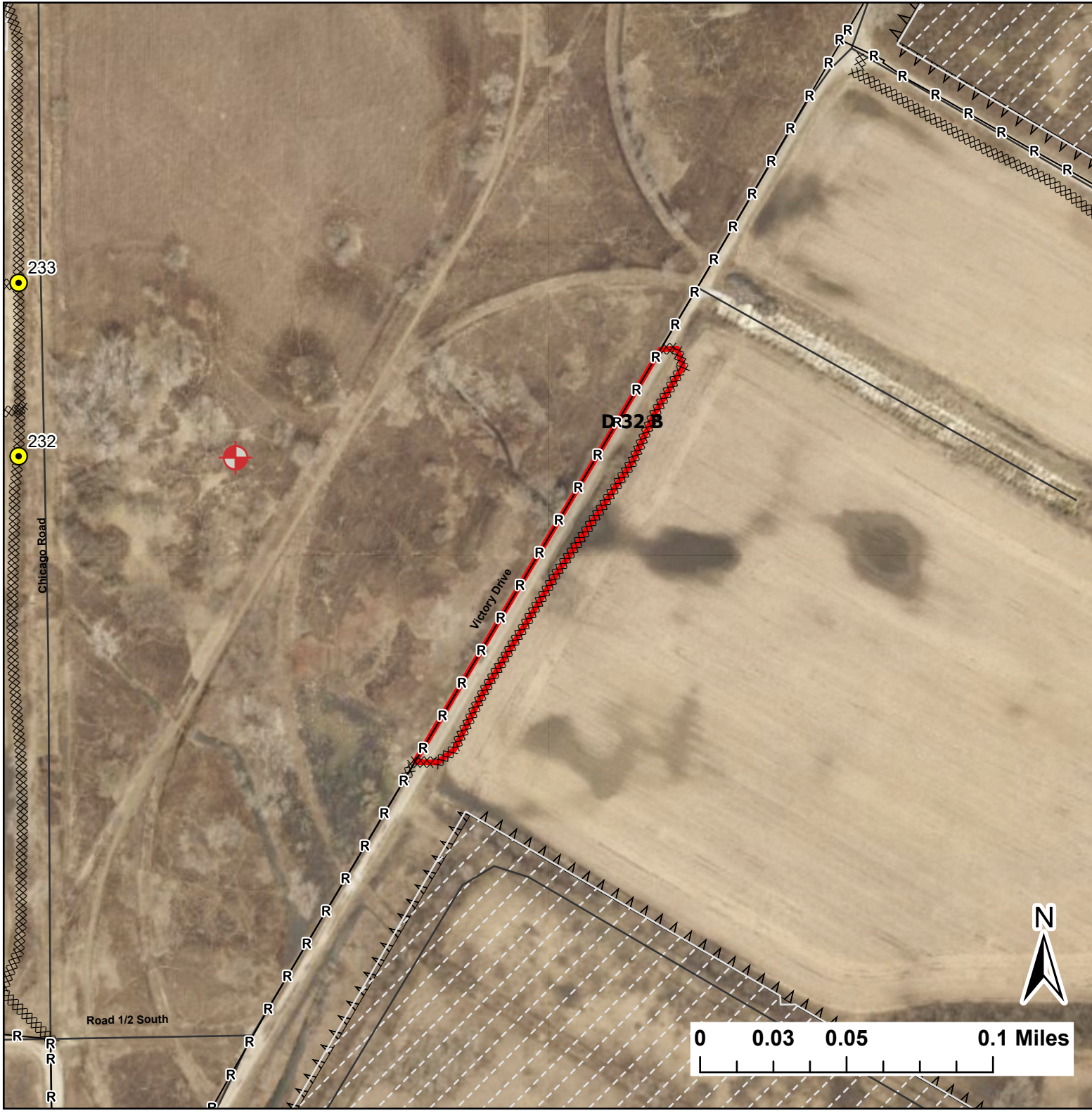


D 32 B

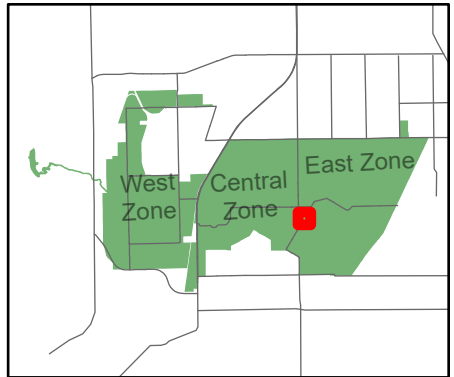
Lat:41.3601
Long:-88.073097

Acres:0.96



Legend

- Burn Unit
- Drop Point
- Army Deep Well
- Chain Link
- Mow Line
- Road As Completed Line
- Army Inholding
- Road



Midwin National Tallgrass Prairie
Prairie Supervisor's Office and Welcome Center
30239 S. State Route 53
Wilmington, IL 60481
Phone: (815) 423 - 6370