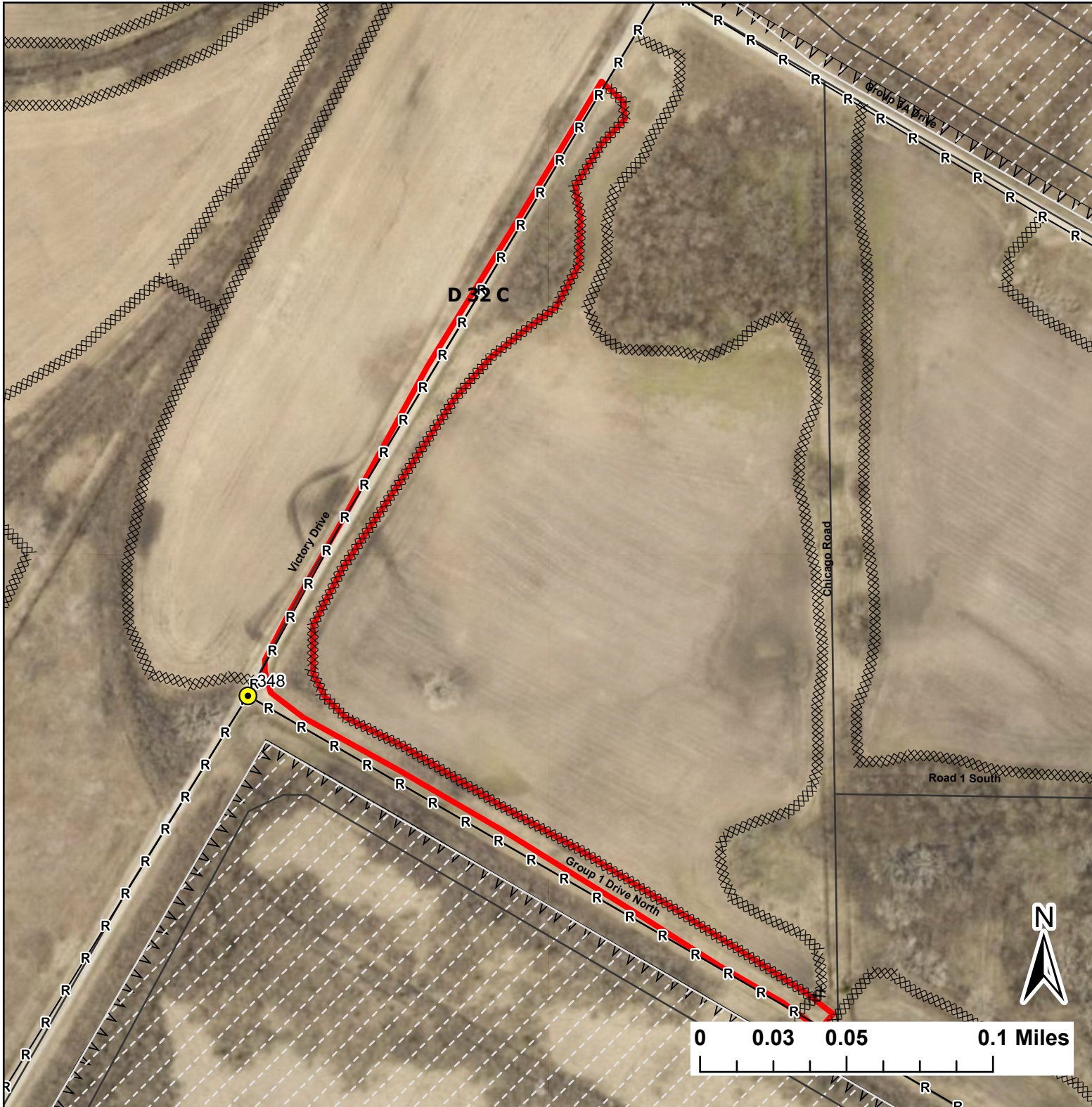


# D 32 C



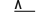




Lat:41.3507

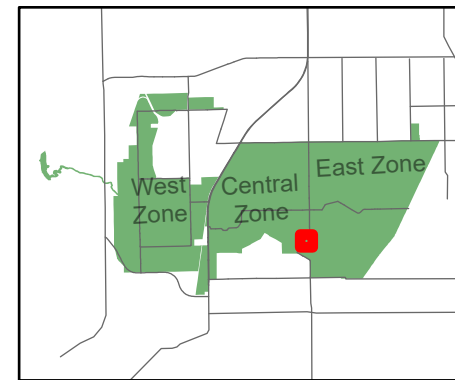
Long:-88.078903

Acres:3.25



### Legend

-  Burn Unit
-  Drop Point
-  Chain Link
-  Mow Line
-  Road As Completed Line
-  Army Inholding
-  Road



Midwin National Tallgrass Prairie  
Prairie Supervisor's Office and Welcome Center  
30239 S. State Route 53  
Wilmington, IL 60481  
Phone: (815) 423 - 6370