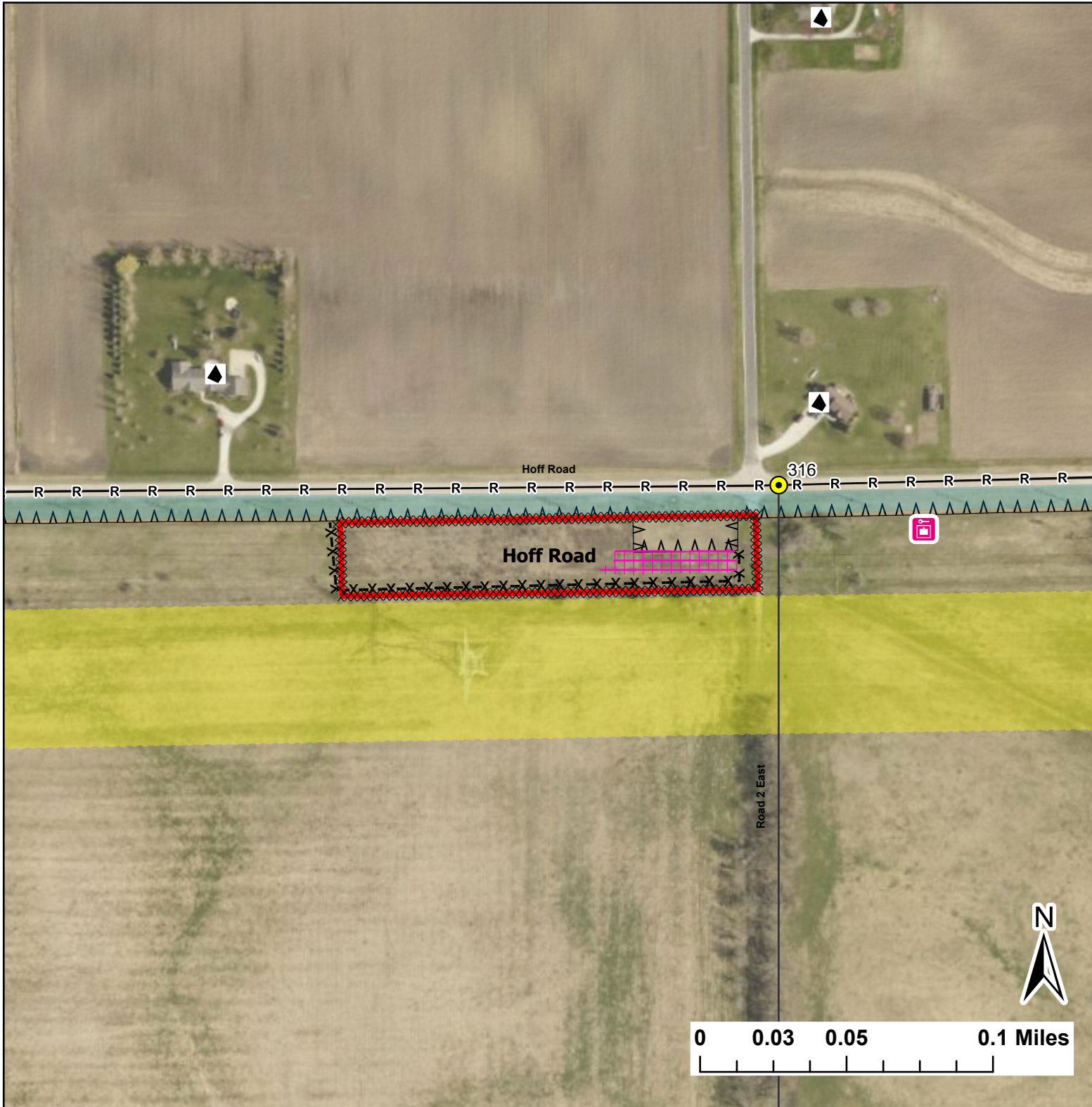


# Hoff Road

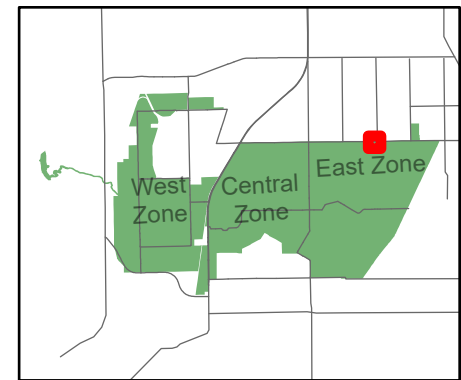
Lat:41.3941  
Long:-88.0401

Acres:2.29



## Legend

- Burn Unit
- Drop Point
- Entry Point
- Electric And Telephone Line
- High Transmission Line
- Barbed Wire
- Chain Link
- Half Mile Structures
- Native Vegetation - Sensitive Area
- Mow Line
- Road As Completed Line
- Road



Midwin National Tallgrass Prairie  
Prairie Supervisor's Office and Welcome Center  
30239 S. State Route 53  
Wilmington, IL 60481  
Phone: (815) 423 - 6370