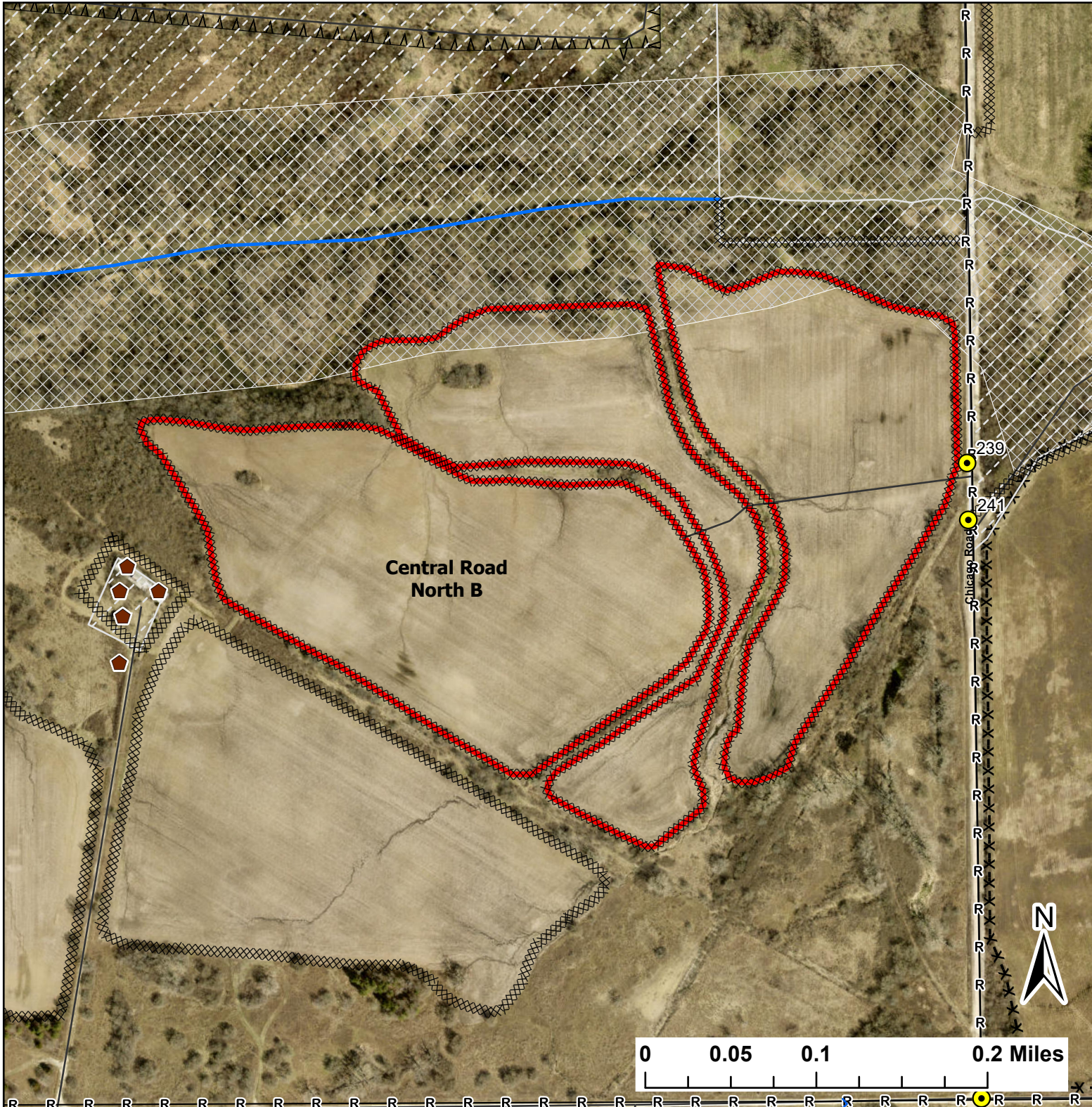


Central Road North B

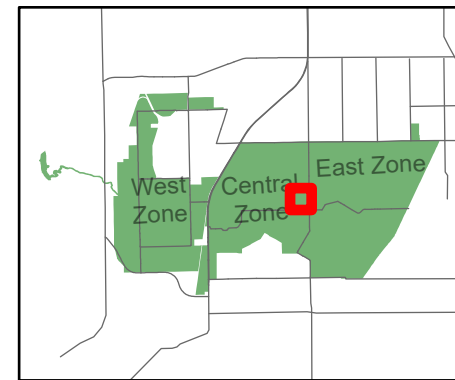
Lat:41.369801
Long:-88.081001

Acres:58.72



Legend

- Burn Unit
- Buildings
- Drop Point
- Barbed Wire
- Chain Link
- UXO Closed Area
- Creek As Completed Line
- Mow Line
- Road As Completed Line
- Wet Line
- Army Inholding
- Road



Midwin National Tallgrass Prairie
Prairie Supervisor's Office and Welcome Center
30239 S. State Route 53
Wilmington, IL 60481
Phone: (815) 423 - 6370