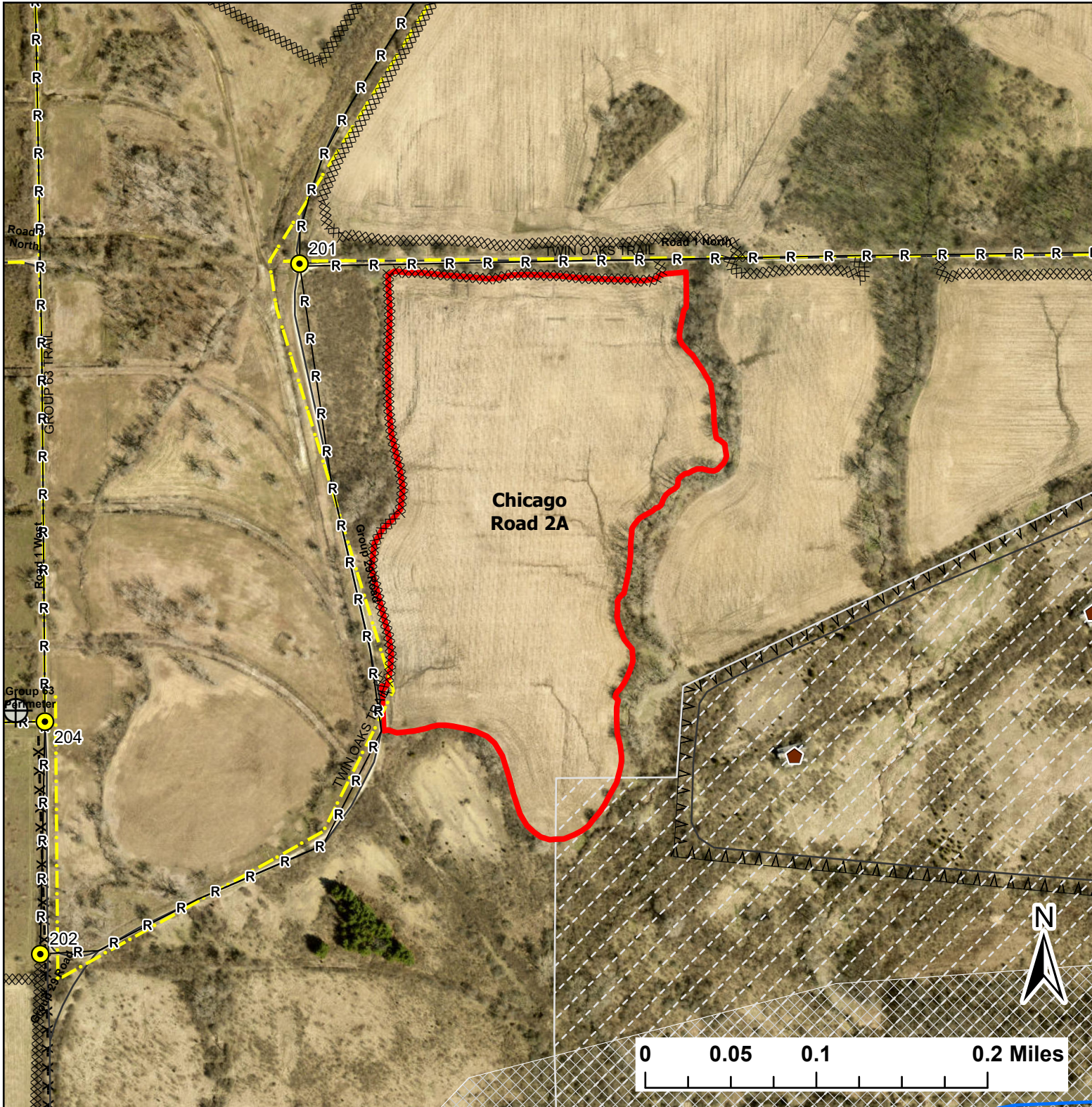


# Chicago Road 2A

Lat:41.377102

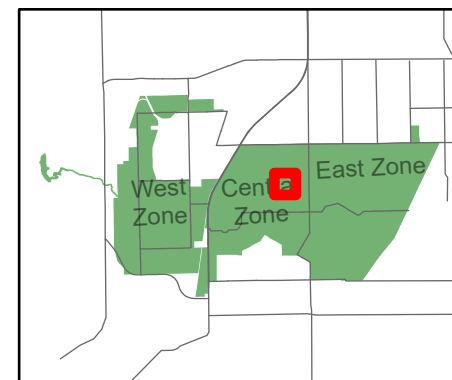
Long:-88.090698

Acres:29.55



## Legend

- Burn Unit
- Buildings
- Drop Point
- Well
- Barbed Wire
- Chain Link
- Trail
- UXO Closed Area
- Creek As Completed Line
- Mow Line
- Road As Completed Line
- Army Inholding
- Road



Midwin National Tallgrass Prairie  
Prairie Supervisor's Office and Welcome Center  
30239 S. State Route 53  
Wilmington, IL 60481  
Phone: (815) 423 - 6370