

Chicago Road 2B

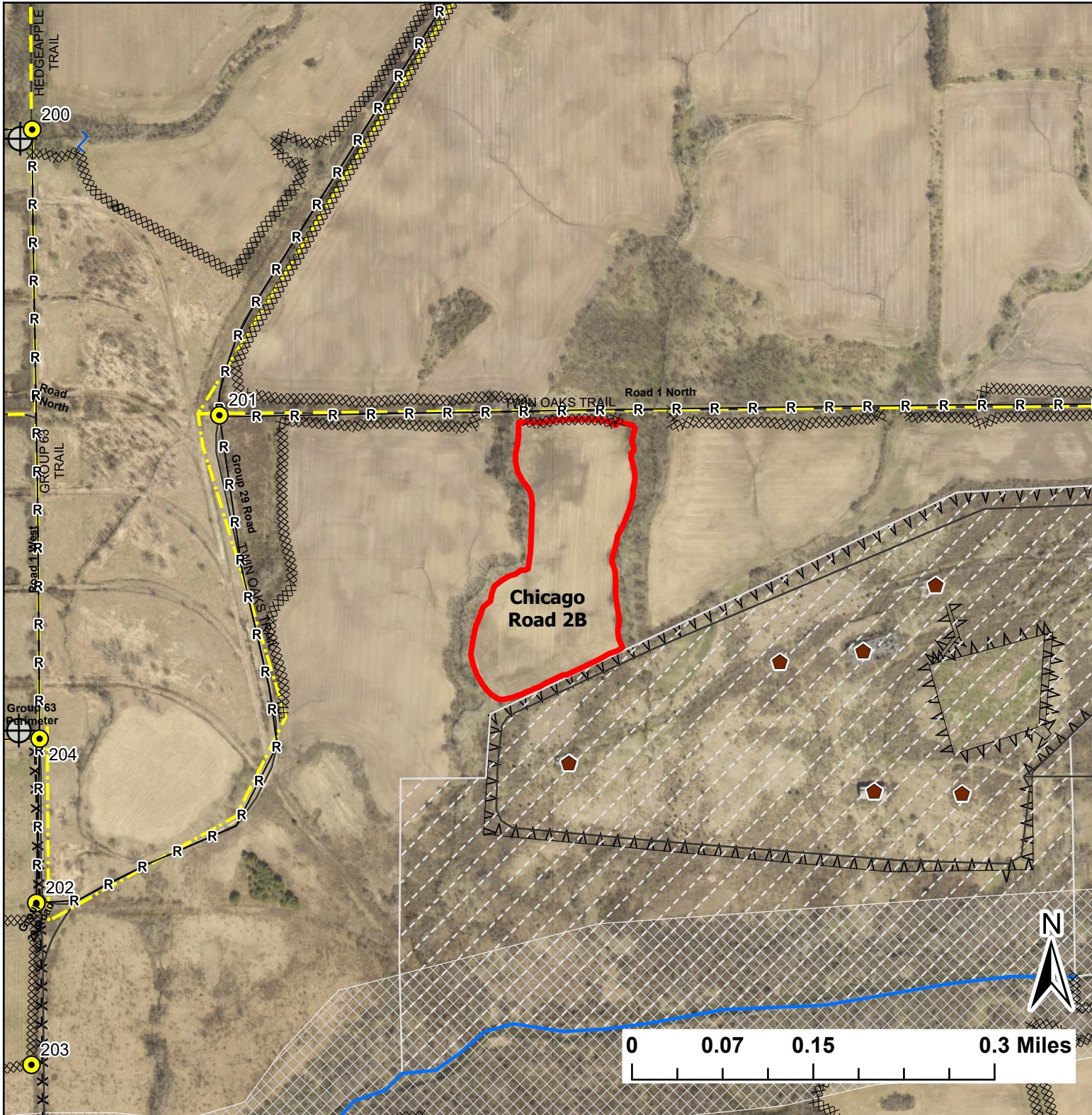
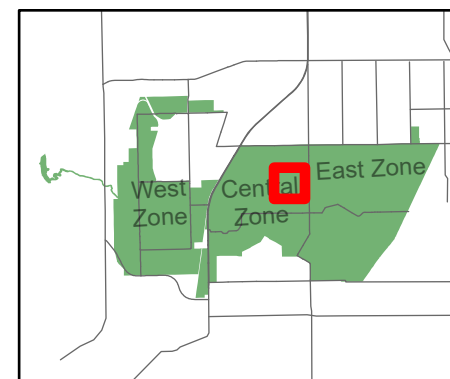
Lat:41.377499

Long:-88.087898

Acres:13.10

Legend

- Burn Unit
- Buildings
- Drop Point
- Well
- Barbed Wire
- Chain Link
- Trail
- UXO Closed Area
- Creek As Completed Line
- Mow Line
- Road As Completed Line
- Wet Line
- Army Inholding
- Road



Midwin National Tallgrass Prairie
Prairie Supervisor's Office and Welcome Center
30239 S. State Route 53
Wilmington, IL 60481
Phone: (815) 423 - 6370