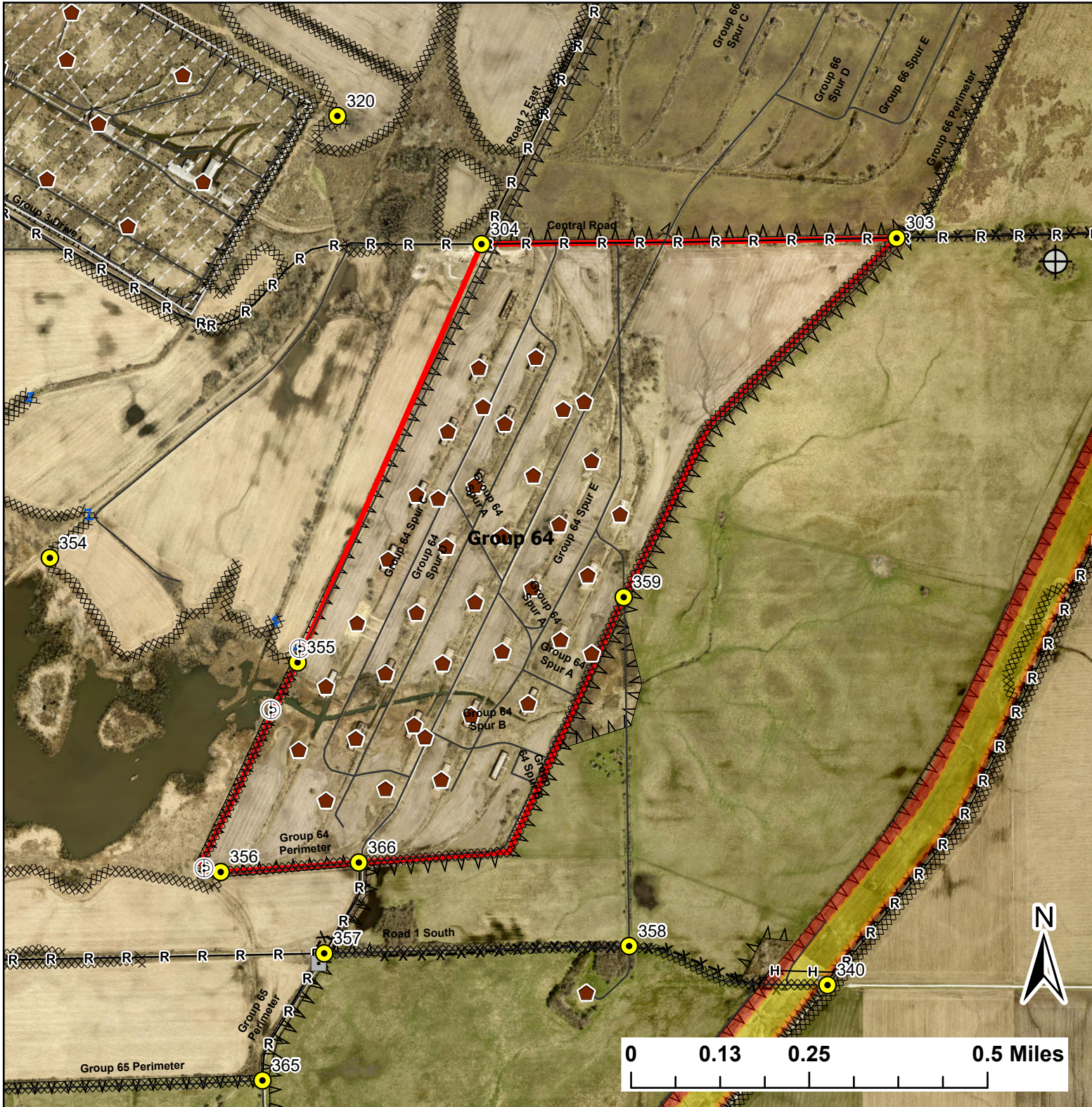


Group 64

Lat:41.3596

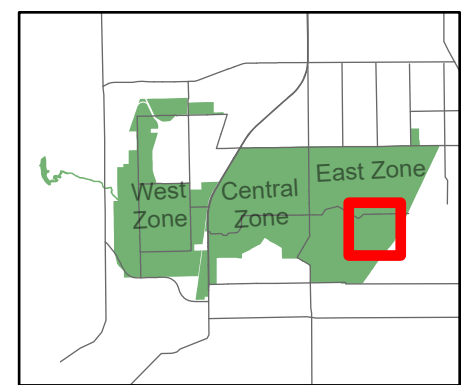
Long:-88.040604

Acres:248.60



Legend

- Burn Unit
- Buildings
- Drop Point
- Hole In Fence
- Lock/Gate
- Well
- High Transmission Line
- Pipeline
- Barbed Wire
- Chain Link
- Woven Wire
- Hand Line
- Mow Line
- Road As Completed Line
- Wet Line
- Army Inholding
- Road



Midwin National Tallgrass Prairie
Prairie Supervisor's Office and Welcome Center
30239 S. State Route 53
Wilmington, IL 60481
Phone: (815) 423 - 6370