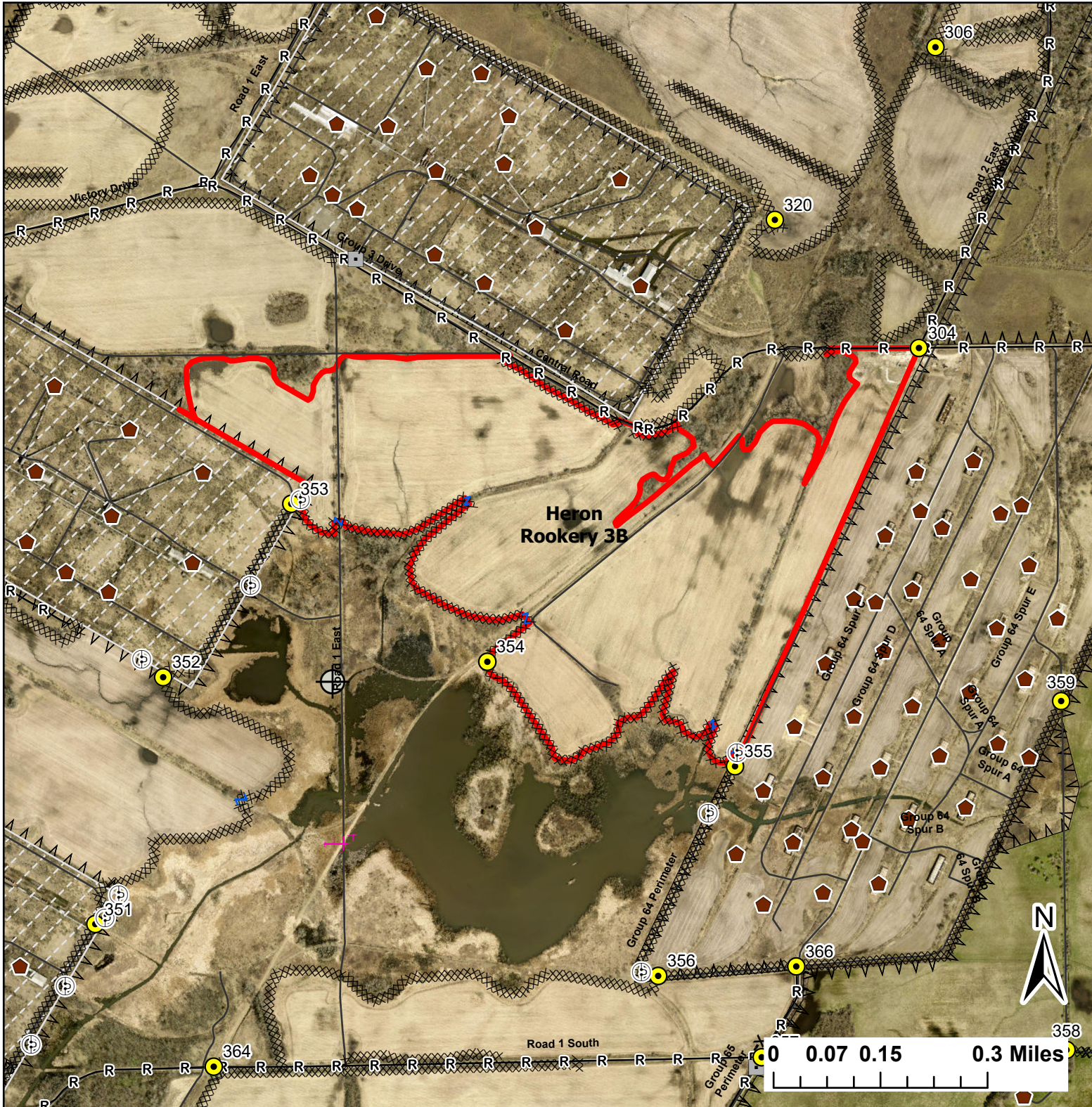


Heron Rookery 3B

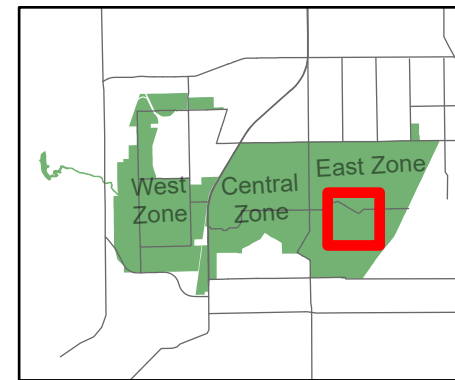
Lat:41.3619
Long:-88.050797

Acres:189.20



Legend

- Burn Unit
- Buildings
- Drop Point
- Hole In Fence
- Lock/Gate
- Well
- Barbed Wire
- Chain Link
- Native Vegetation - Sensitive Area
- Mow Line
- Road As Completed Line
- Wet Line
- Army Inholding
- Road



Midwin National Tallgrass Prairie
Prairie Supervisor's Office and Welcome Center
30239 S. State Route 53
Wilmington, IL 60481
Phone: (815) 423 - 6370