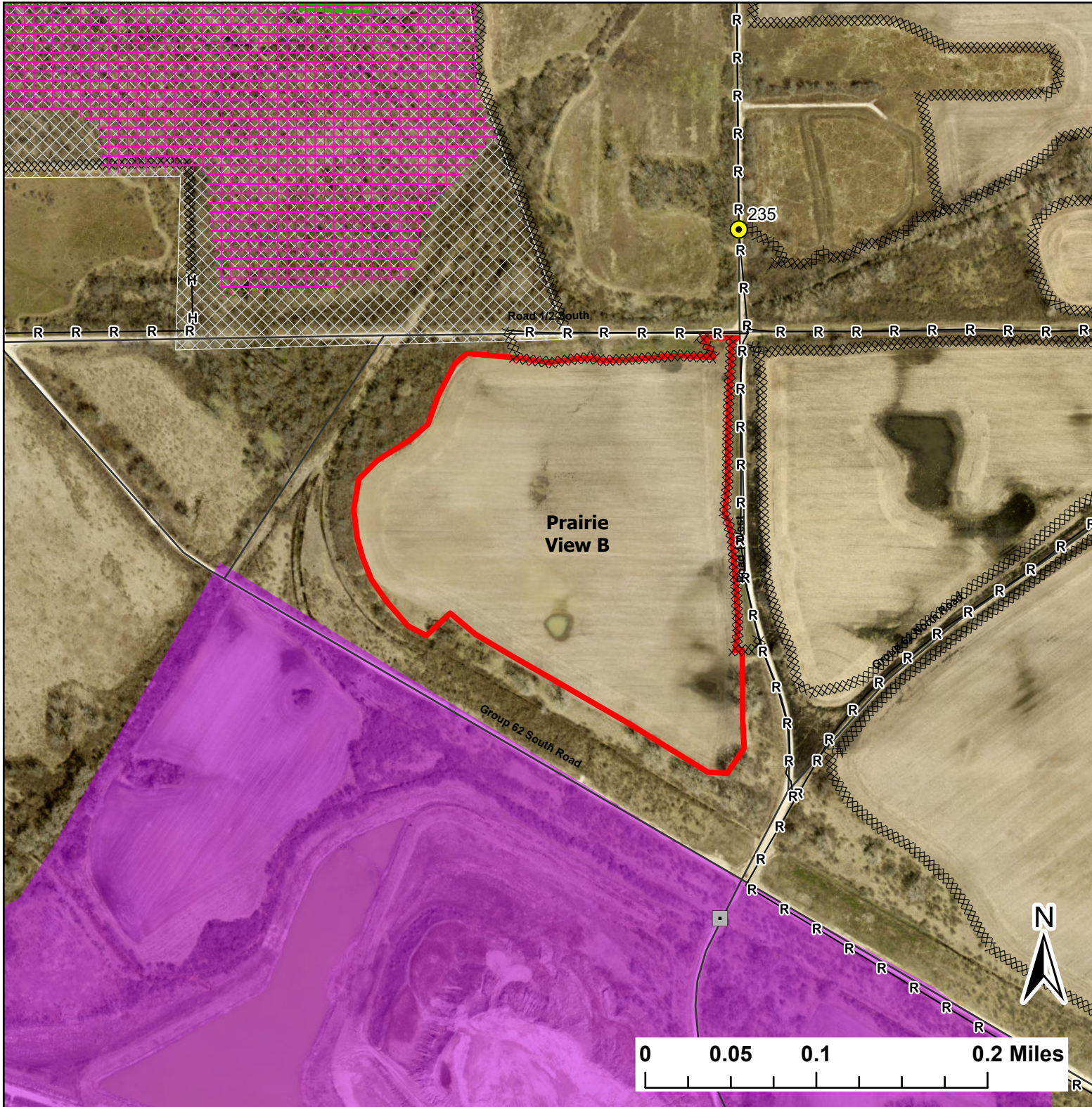


# Prairie View B

Lat:41.355598

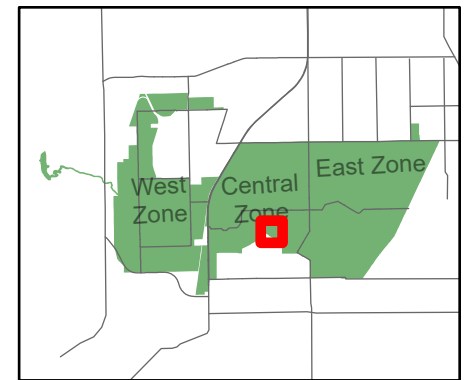
Long:-88.097397

Acres:24.93



### Legend

- Burn Unit
- Cemetery
- Drop Point
- Lock/Gate
- Native Vegetation - Sensitive Area
- UXO Closed Area
- Adjacent Land
- Hand Line
- Mow Line
- Road As Completed Line
- Road



Midwin National Tallgrass Prairie  
Prairie Supervisor's Office and Welcome Center  
30239 S. State Route 53  
Wilmington, IL 60481  
Phone: (815) 423 - 6370