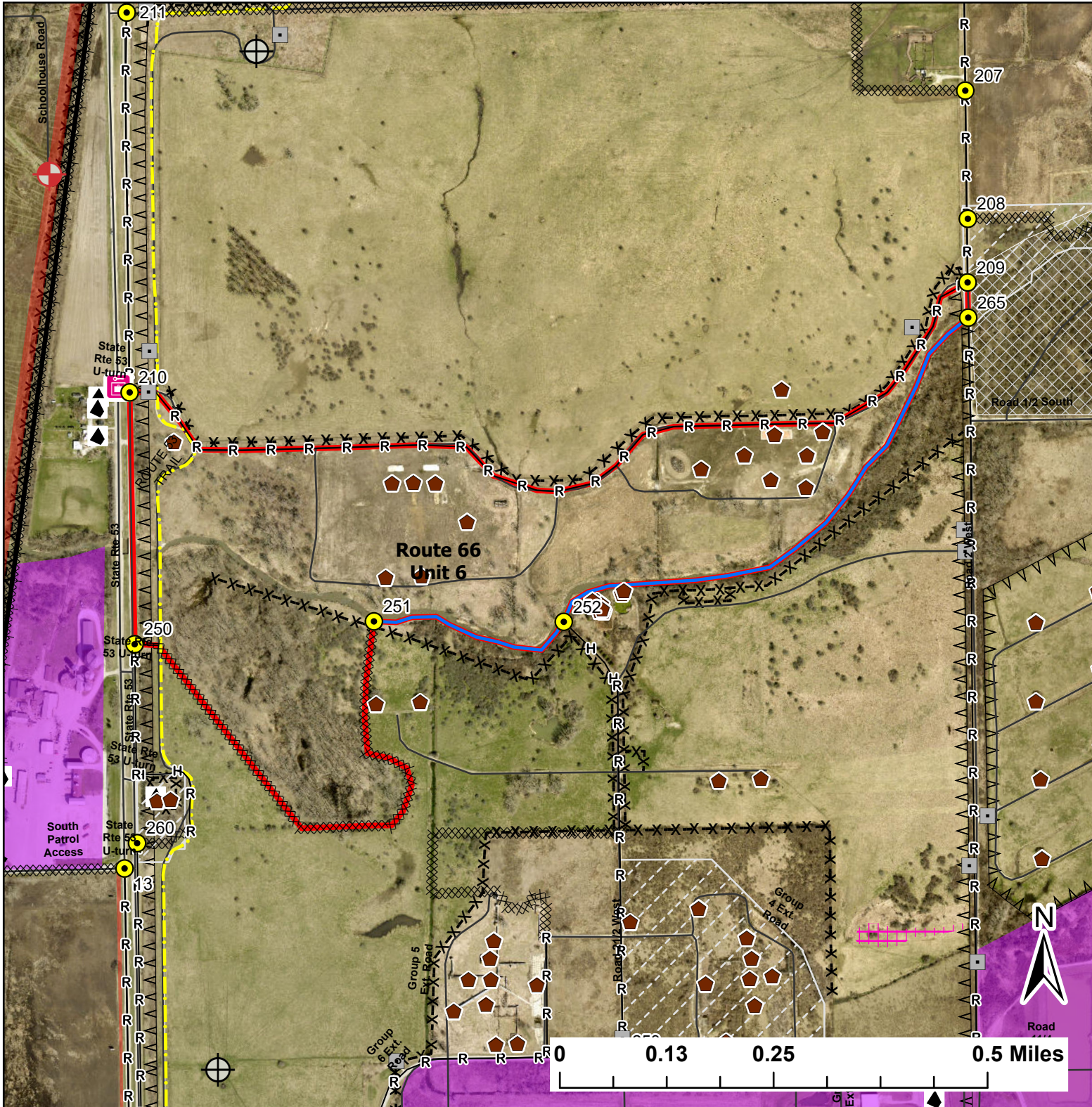


# Route 66 Unit 6

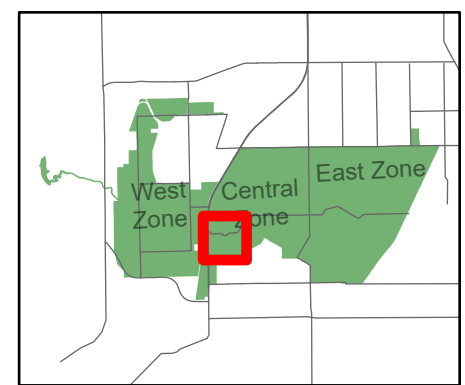
Lat:41.3545

Long:-88.126701

Acres:133.51



| Legend |                                    |
|--------|------------------------------------|
|        | Burn Unit                          |
|        | Buildings                          |
|        | Drop Point                         |
|        | Entry Point                        |
|        | Lock/Gate                          |
|        | Army Deep Well                     |
|        | Well                               |
|        | Railroad                           |
|        | Pipeline                           |
|        | Barbed Wire                        |
|        | Chain Link                         |
|        | Trail                              |
|        | Half Mile Structures               |
|        | Native Vegetation - Sensitive Area |
|        | UXO Closed Area                    |
|        | Adjacent Land                      |
|        | Creek As Completed Line            |
|        | Hand Line                          |
|        | Mow Line                           |
|        | Road As Completed Line             |
|        | Army Inholding                     |
|        | Road                               |



Midwin National Tallgrass Prairie  
 Prairie Supervisor's Office and Welcome Center  
 30239 S. State Route 53  
 Wilmington, IL 60481  
 Phone: (815) 423 - 6370