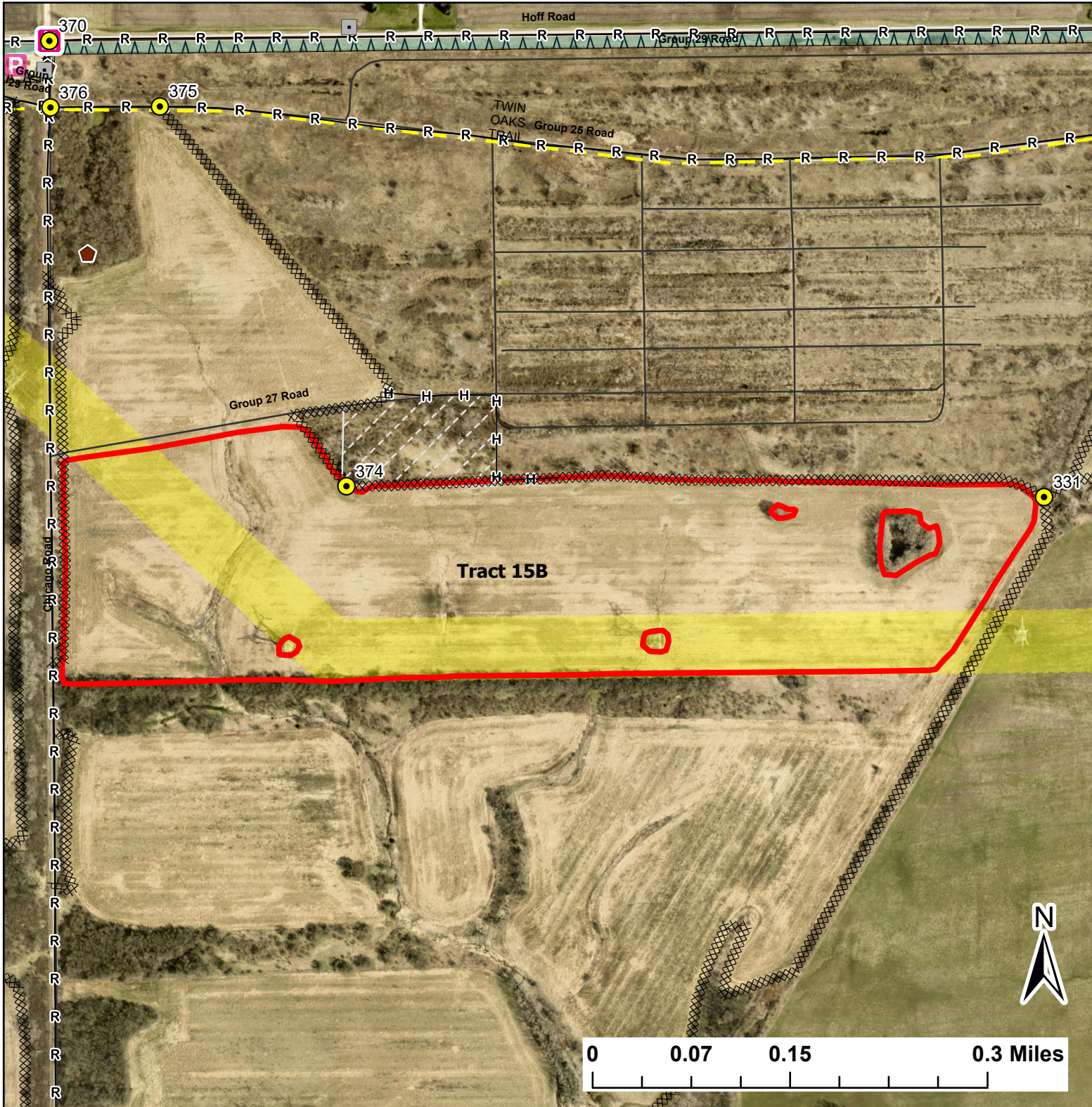


# Tract 15B

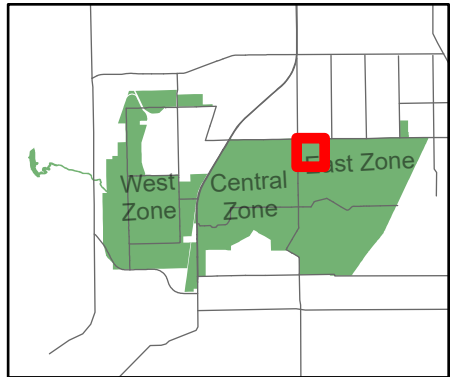
Lat:41.388  
Long:-88.070702

Acres:69.52



### Legend

- Burn Unit
- Buildings
- Drop Point
- Entry Point
- Lock/Gate
- Parking Lot
- Electric And Telephone Line
- High Transmission Line
- Chain Link
- Trail
- Hand Line
- Mow Line
- Road As Completed Line
- Army Inholding
- Road



Midwin National Tallgrass Prairie  
Prairie Supervisor's Office and Welcome Center  
30239 S. State Route 53  
Wilmington, IL 60481  
Phone: (815) 423 - 6370