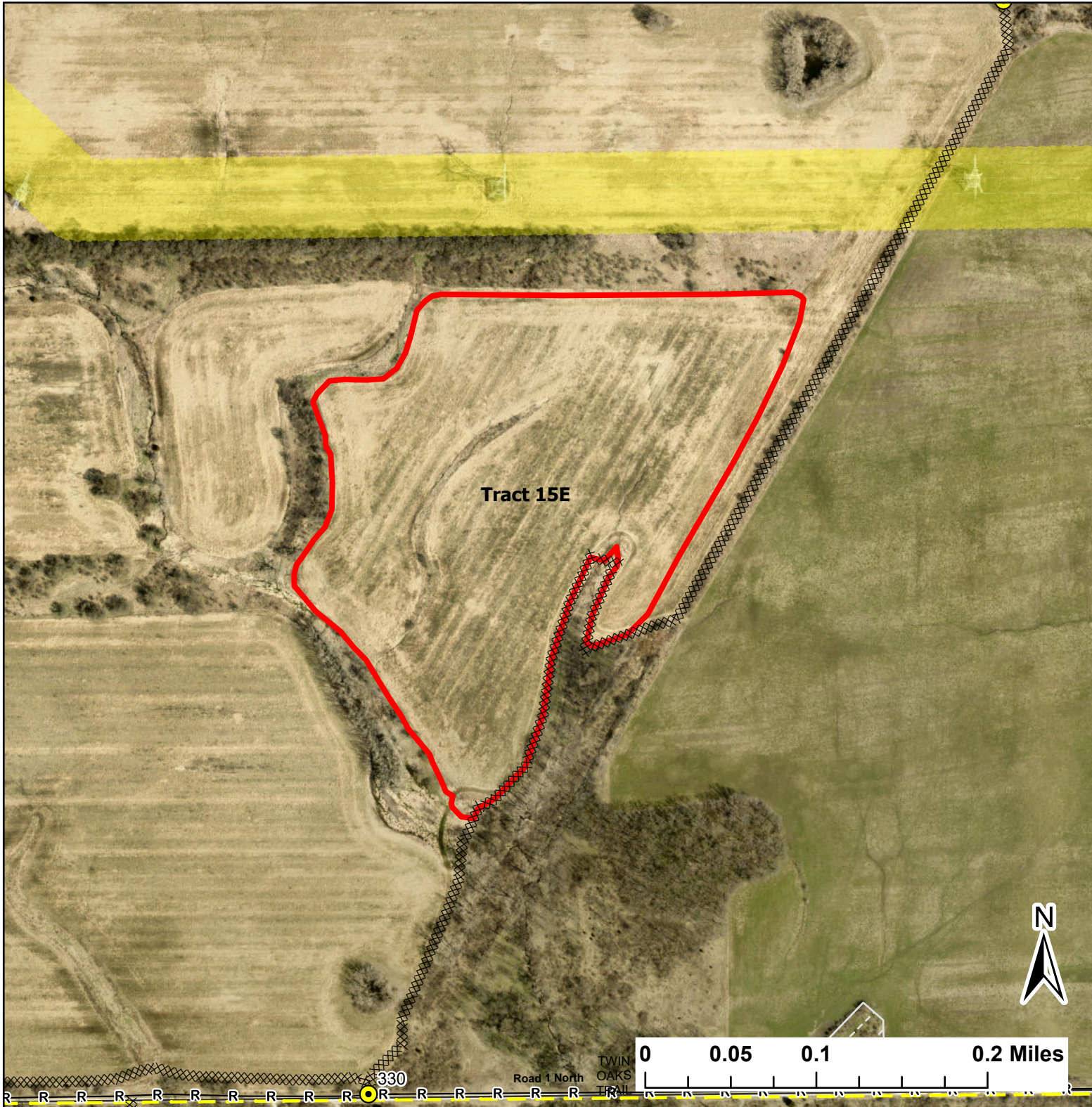


Tract 15E






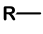


Lat:41.384701

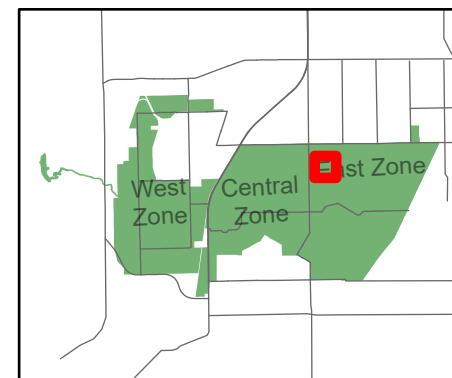
Long:-88.0681

Acres:33.31



Legend

-  Burn Unit
-  Drop Point
-  High Transmission Line
-  Trail
-  Mow Line
-  Road As Completed Line
-  Army Inholding
-  Road



Midwin National Tallgrass Prairie
Prairie Supervisor's Office and Welcome Center
30239 S. State Route 53
Wilmington, IL 60481
Phone: (815) 423 - 6370