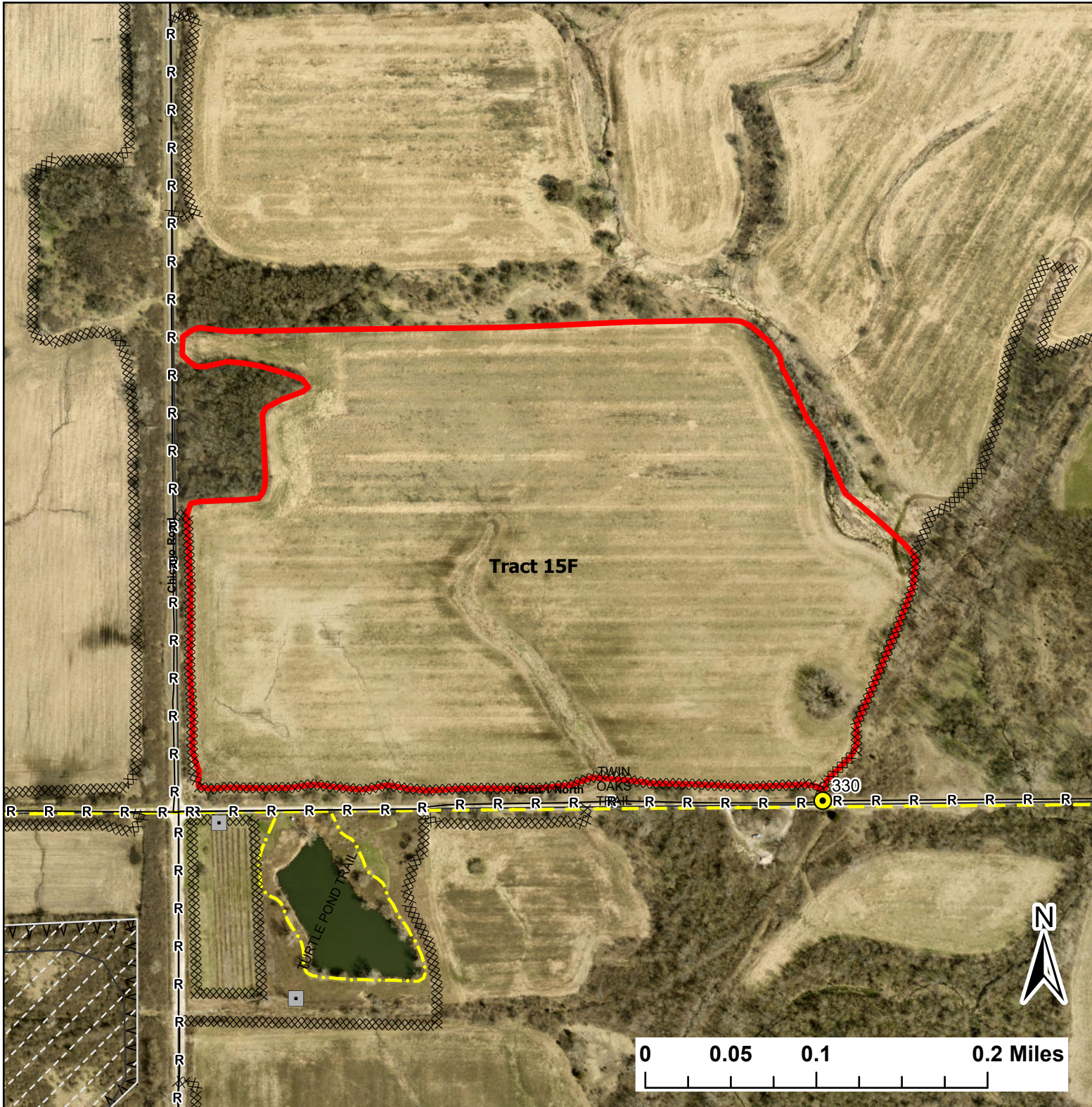


Tract 15F

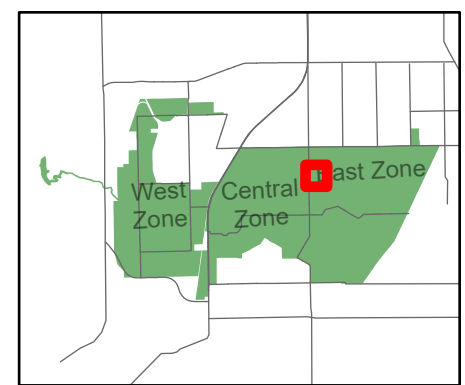
Lat:41.3815
Long:-88.072998

Acres:64.12



Legend

- Burn Unit
- Drop Point
- Lock/Gate
- Chain Link
- Trail
- Mow Line
- Road As Completed Line
- Army Inholding
- Road



Midwin National Tallgrass Prairie
Prairie Supervisor's Office and Welcome Center
30239 S. State Route 53
Wilmington, IL 60481
Phone: (815) 423 - 6370