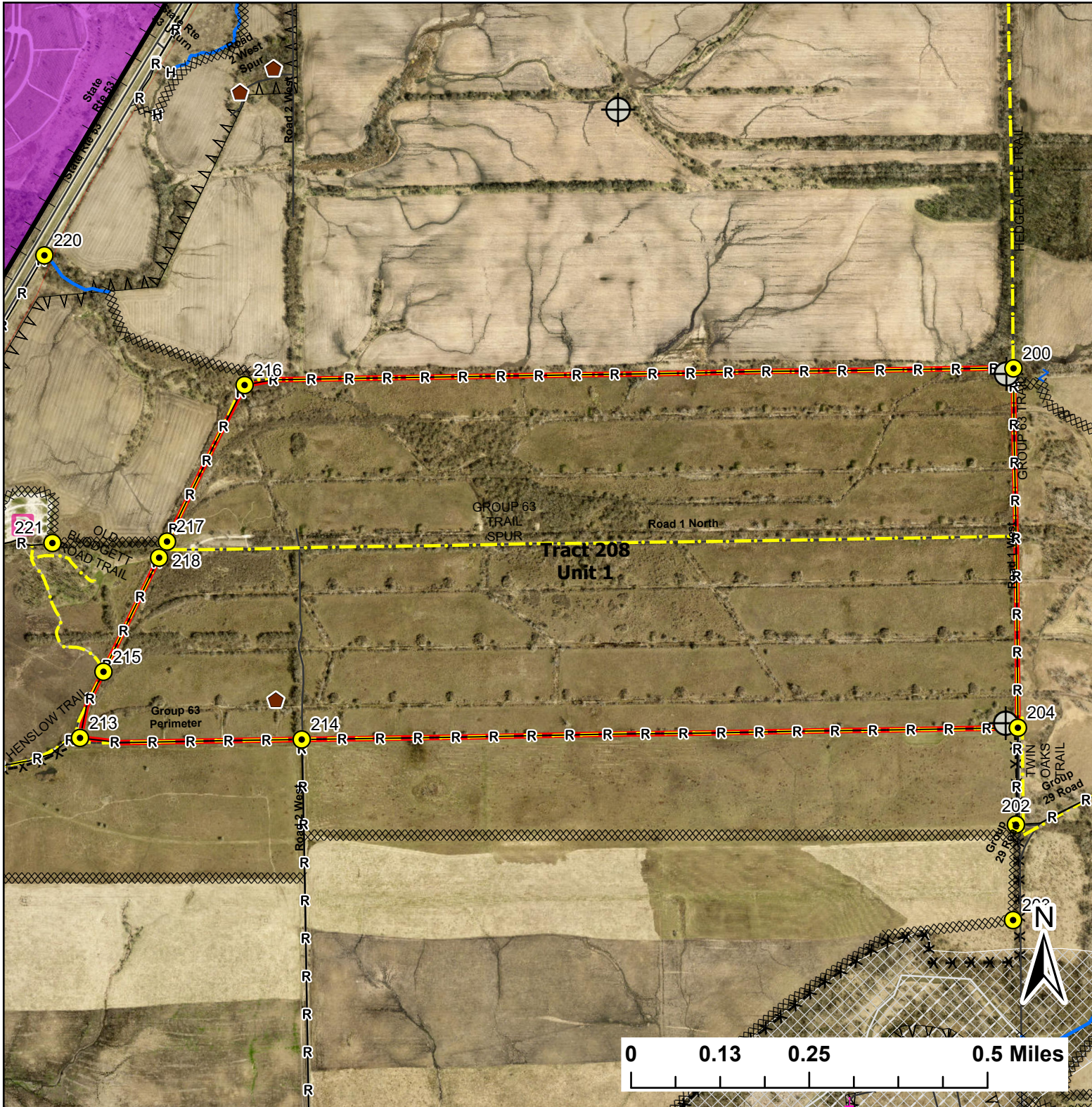


Tract 208 Unit 1

Lat:41.378502

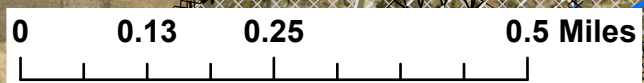
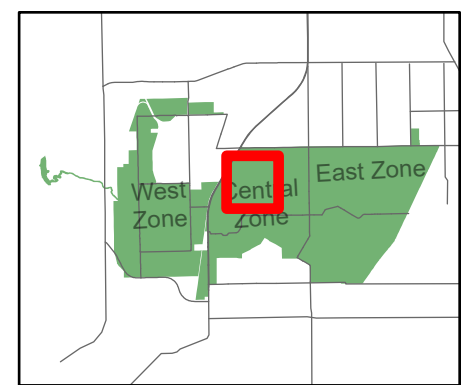
Long:-88.107903

Acres:389.21



Legend

- Burn Unit
- Buildings
- Drop Point
- Parking Lot
- Well
- Railroad
- Pipeline
- Barbed Wire
- Chain Link
- Trail
- Native Vegetation - Sensitive Area
- UXO Closed Area
- Adjacent Land
- Creek As Completed Line
- Hand Line
- Mow Line
- Road As Completed Line
- Wet Line
- Army Inholding
- Road



Midwin National Tallgrass Prairie
Prairie Supervisor's Office and Welcome Center
30239 S. State Route 53
Wilmington, IL 60481
Phone: (815) 423 - 6370