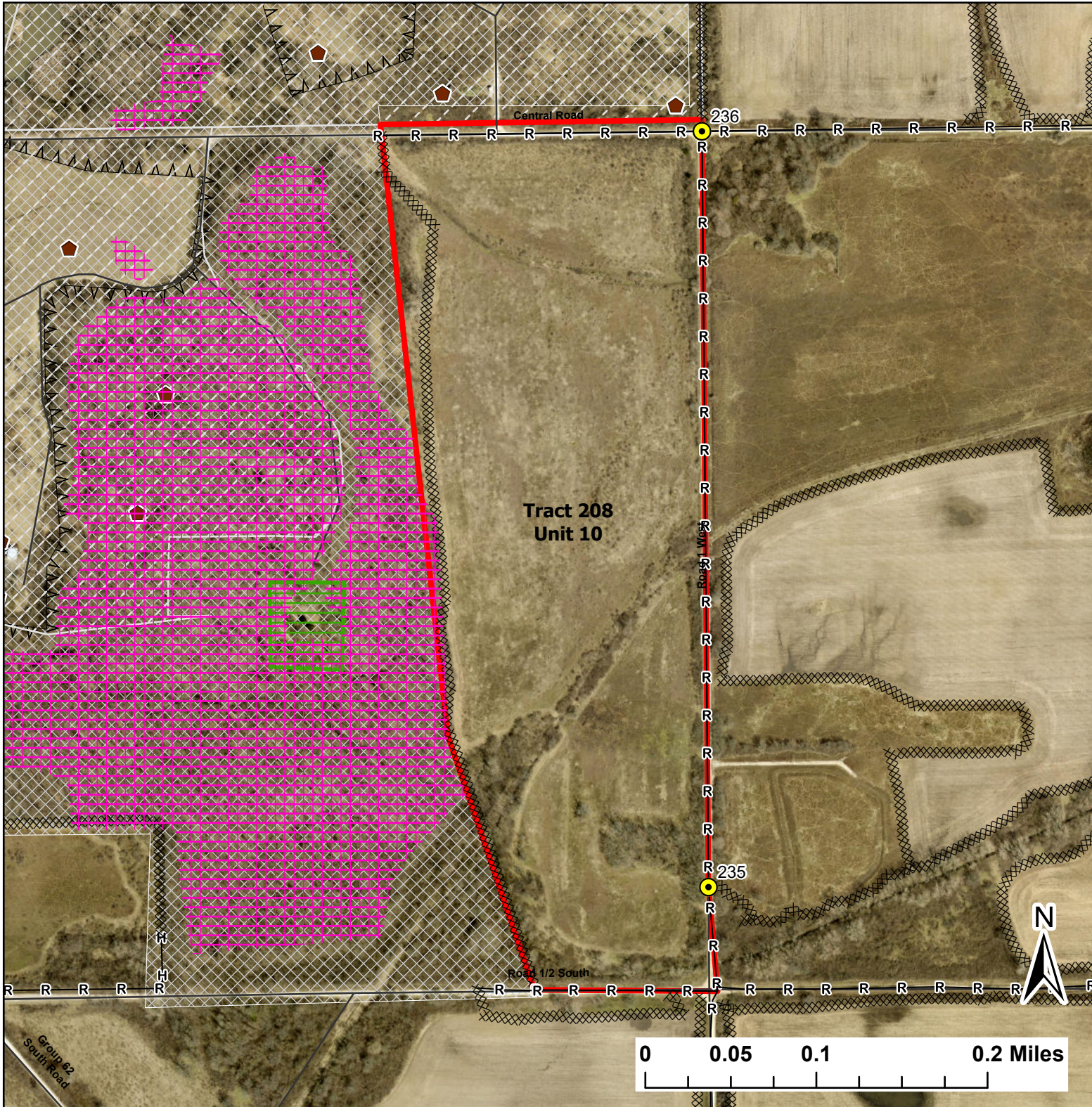


Tract 208 Unit 10

Lat:41.361301

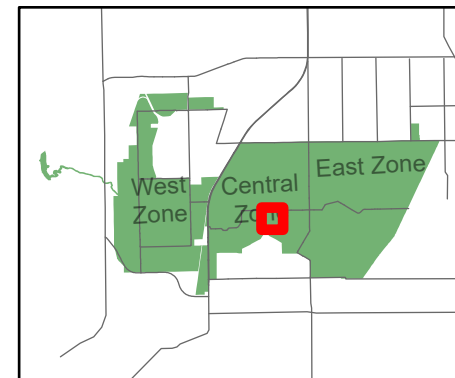
Long:-88.097298

Acres:51.19



Legend

- Burn Unit
- Buildings
- Cemetery
- Drop Point
- Chain Link
- Native Vegetation - Sensitive Area
- UXO Closed Area
- Hand Line
- Mow Line
- Road As Completed Line
- Army Inholding
- Road



Midwin National Tallgrass Prairie
Prairie Supervisor's Office and Welcome Center
30239 S. State Route 53
Wilmington, IL 60481
Phone: (815) 423 - 6370