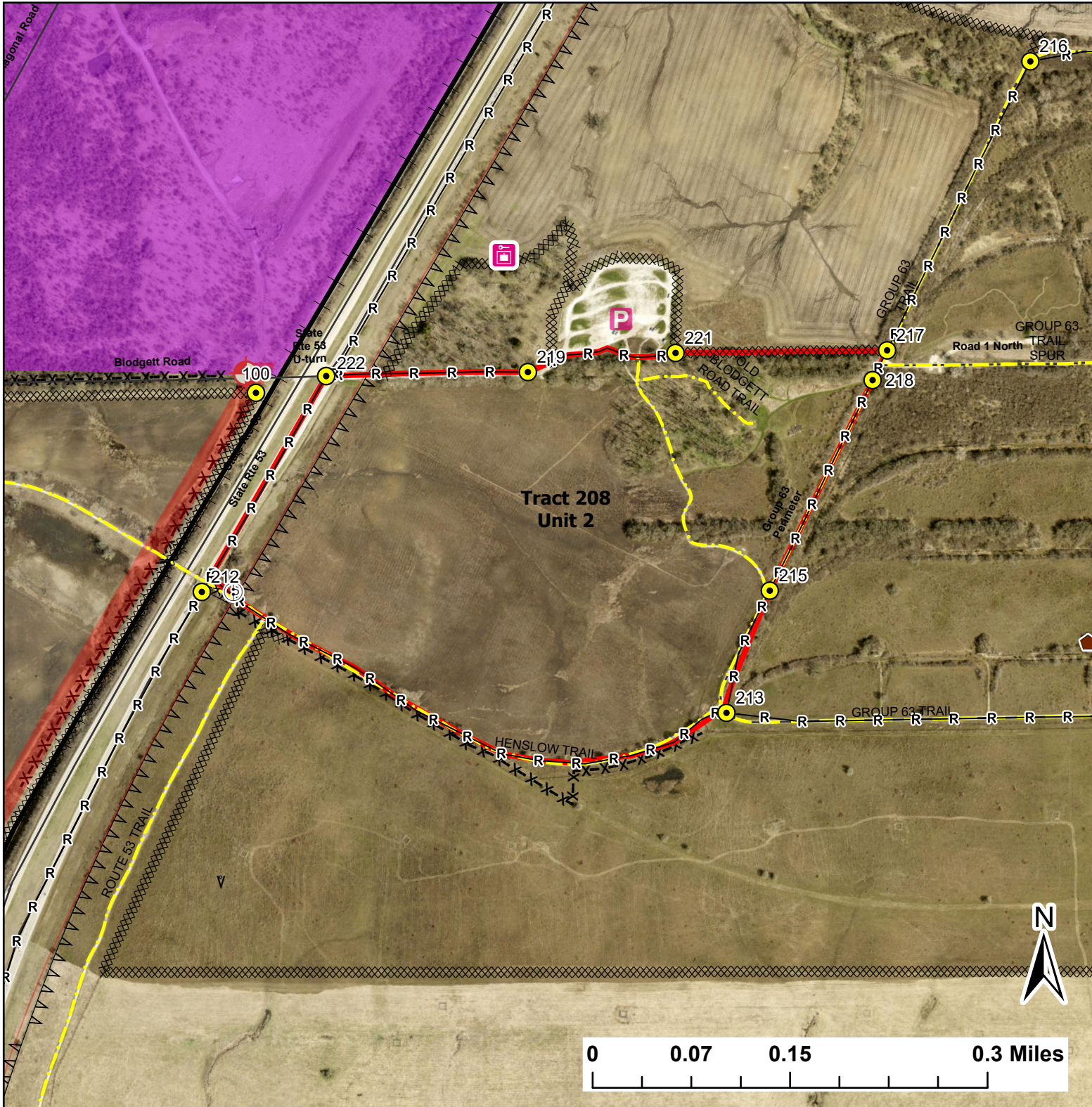


Tract 208 Unit 2

Lat:41.376701

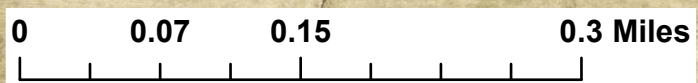
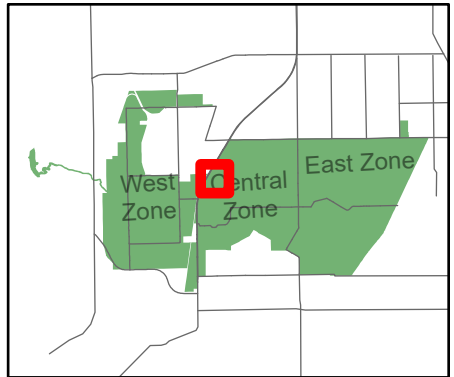
Long:-88.1241

Acres:69.97



Legend

- Burn Unit
- Buildings
- Drop Point
- Entry Point
- Hole In Fence
- Parking Lot
- Army Deep Well
- Railroad
- Pipeline
- Barbed Wire
- Chain Link
- Trail
- Adjacent Land
- Mow Line
- Road As Completed Line
- Road



Midwin National Tallgrass Prairie
Prairie Supervisor's Office and Welcome Center
30239 S. State Route 53
Wilmington, IL 60481
Phone: (815) 423 - 6370