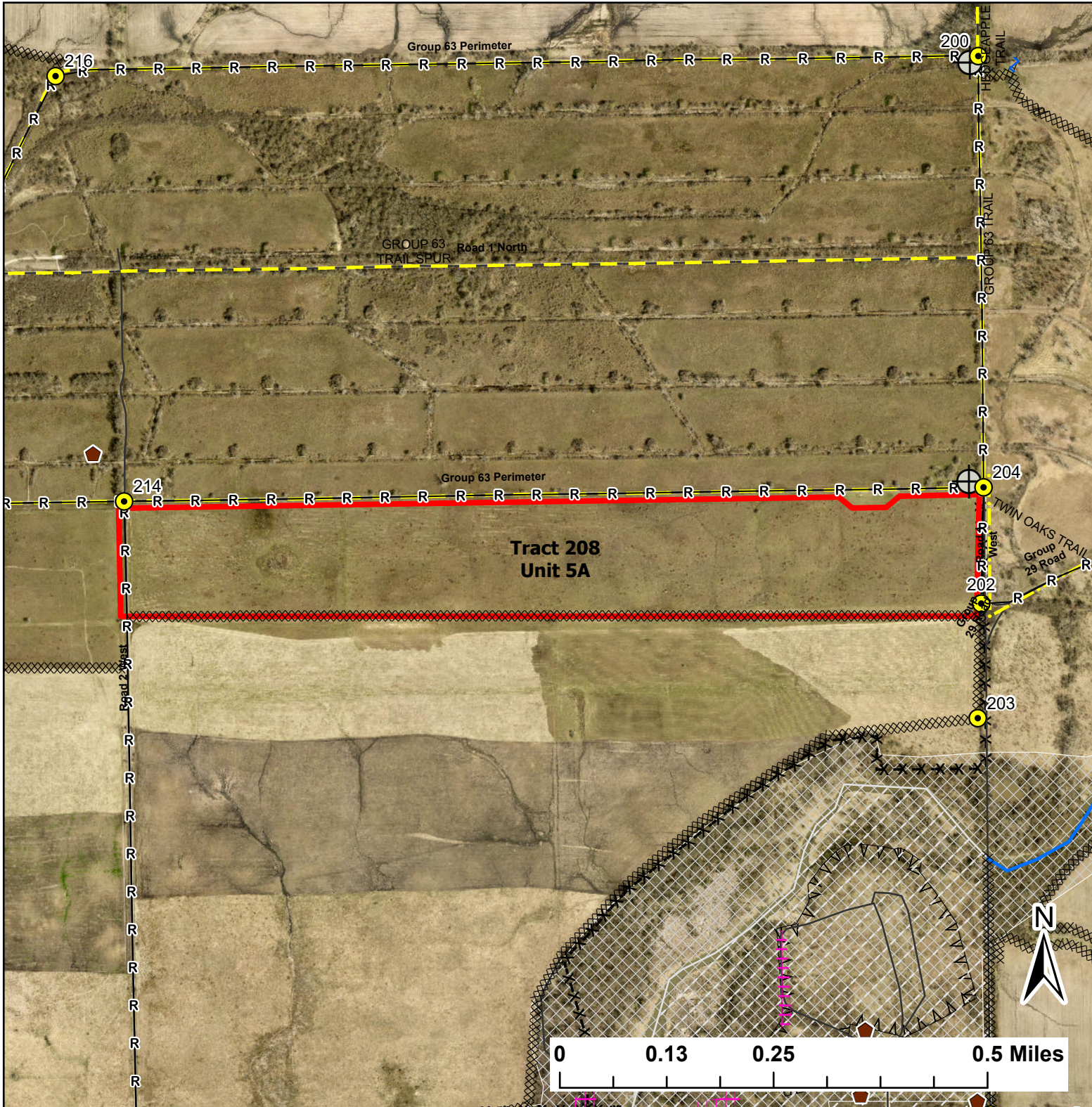


Tract 208 Unit 5A

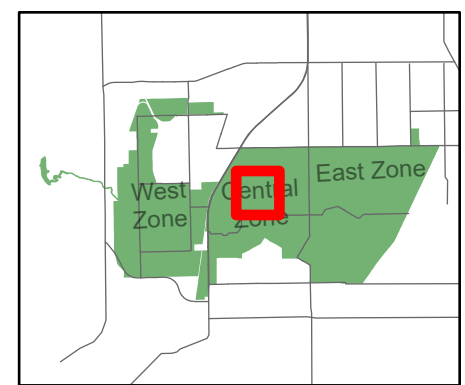
Lat:41.373901
Long:-88.105797

Acres:85.56



Legend

- Burn Unit
- Buildings
- Drop Point
- Well
- Barbed Wire
- Chain Link
- Trail
- Native Vegetation - Sensitive Area
- UXO Closed Area
- Creek As Completed Line
- Mow Line
- Road As Completed Line
- Wet Line
- Army Inholding
- Road



Midwin National Tallgrass Prairie
Prairie Supervisor's Office and Welcome Center
30239 S. State Route 53
Wilmington, IL 60481
Phone: (815) 423 - 6370