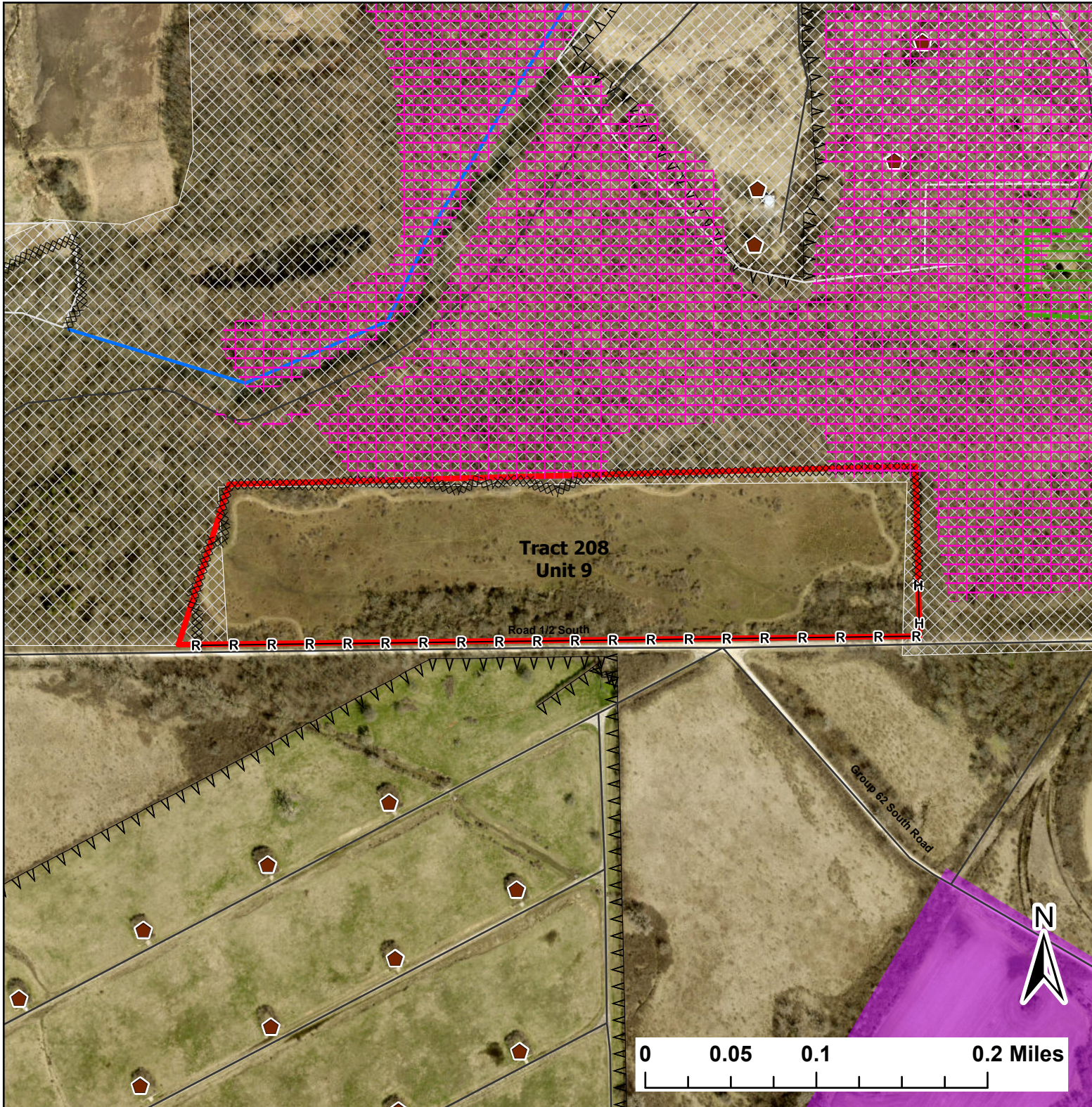


Tract 208 Unit 9

Lat:41.357899

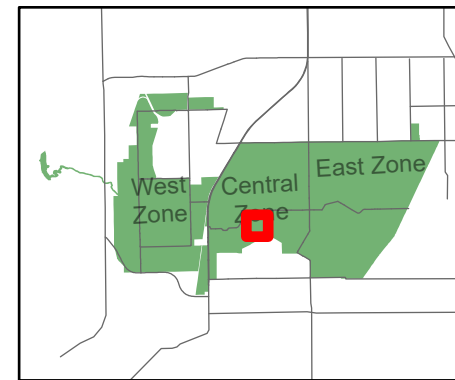
Long:-88.105797

Acres:25.72



Legend

- Burn Unit
- Buildings
- Cemetery
- Chain Link
- Native Vegetation - Sensitive Area
- UXO Closed Area
- Adjacent Land
- Creek As Completed Line
- Hand Line
- Mow Line
- Road As Completed Line
- Army Inholding
- Road



Midwin National Tallgrass Prairie
Prairie Supervisor's Office and Welcome Center
30239 S. State Route 53
Wilmington, IL 60481
Phone: (815) 423 - 6370