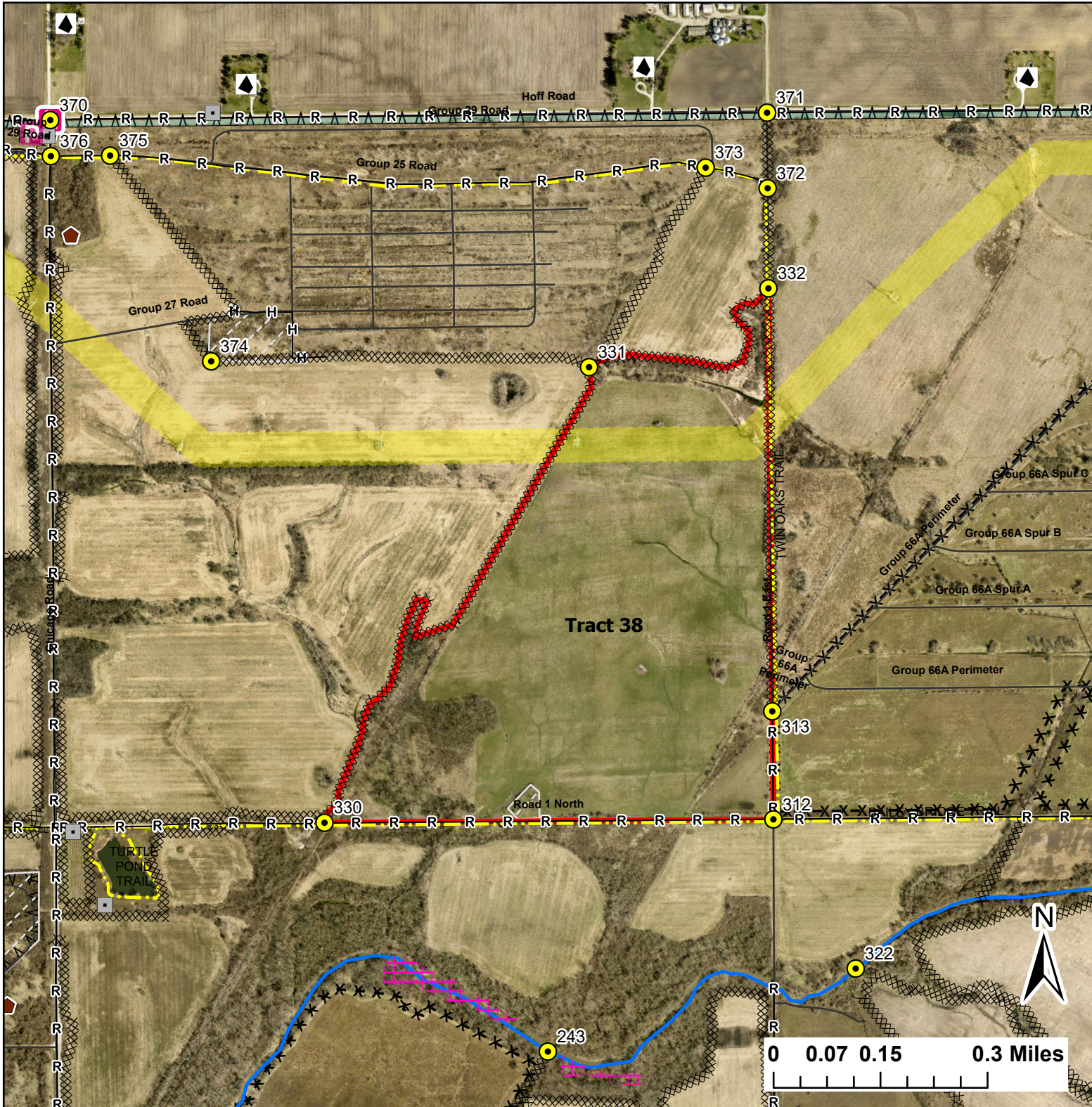


Tract 38

Lat:41.383701

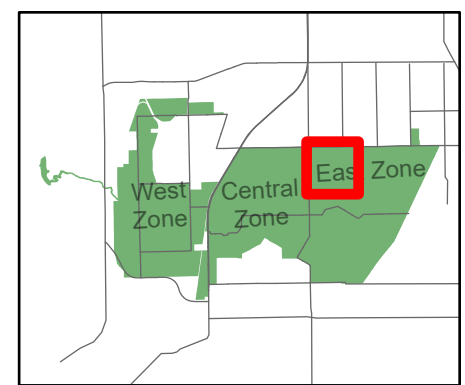
Long:-88.062302

Acres:182.50



Legend

- Burn Unit
- Buildings
- Drop Point
- Entry Point
- Lock/Gate
- Parking Lot
- Electric And Telephone Line
- High Transmission Line
- Barbed Wire
- Chain Link
- Trail
- Half Mile Structures
- Native Vegetation - Sensitive Area
- Creek As Completed Line
- Hand Line
- Mow Line
- Road As Completed Line
- Army Inholding
- Road



Midwin National Tallgrass Prairie
Prairie Supervisor's Office and Welcome Center
30239 S. State Route 53
Wilmington, IL 60481
Phone: (815) 423 - 6370

