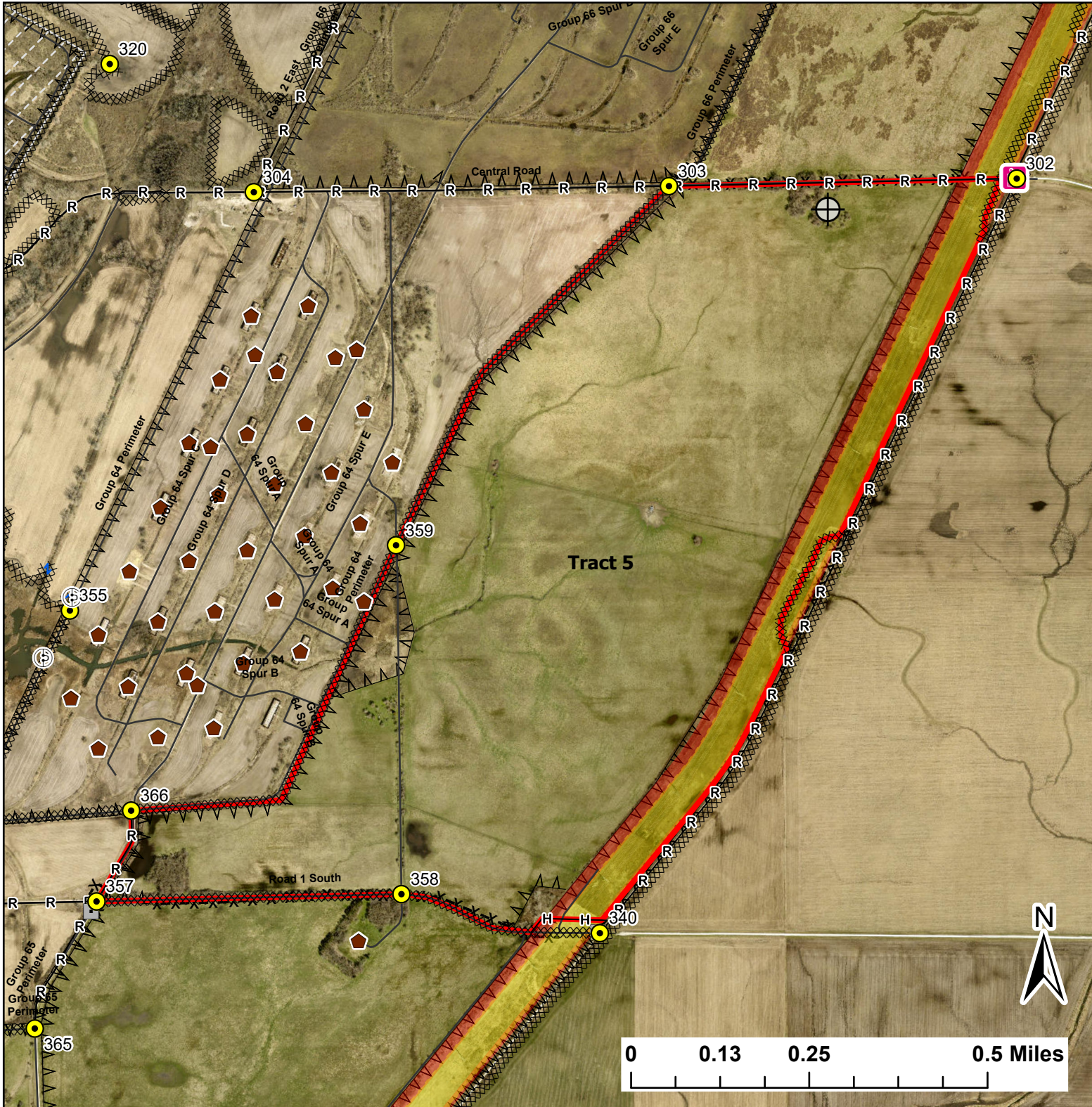


# Tract 5

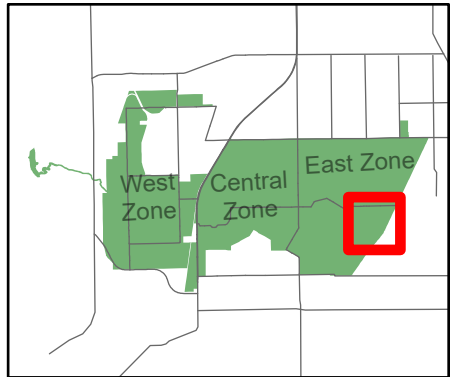
Lat:41.358101  
Long:-88.031998

Acres:394.57



### Legend

- Burn Unit
- Buildings
- Drop Point
- Entry Point
- Hole In Fence
- Lock/Gate
- Well
- High Transmission Line
- Pipeline
- X Barbed Wire
- △ Chain Link
- △ Woven Wire
- H- Hand Line
- ⊗ Mow Line
- R- Road As Completed Line
- Wet Line
- Army Inholding
- Road



Midwin National Tallgrass Prairie  
Prairie Supervisor's Office and Welcome Center  
30239 S. State Route 53  
Wilmington, IL 60481  
Phone: (815) 423 - 6370