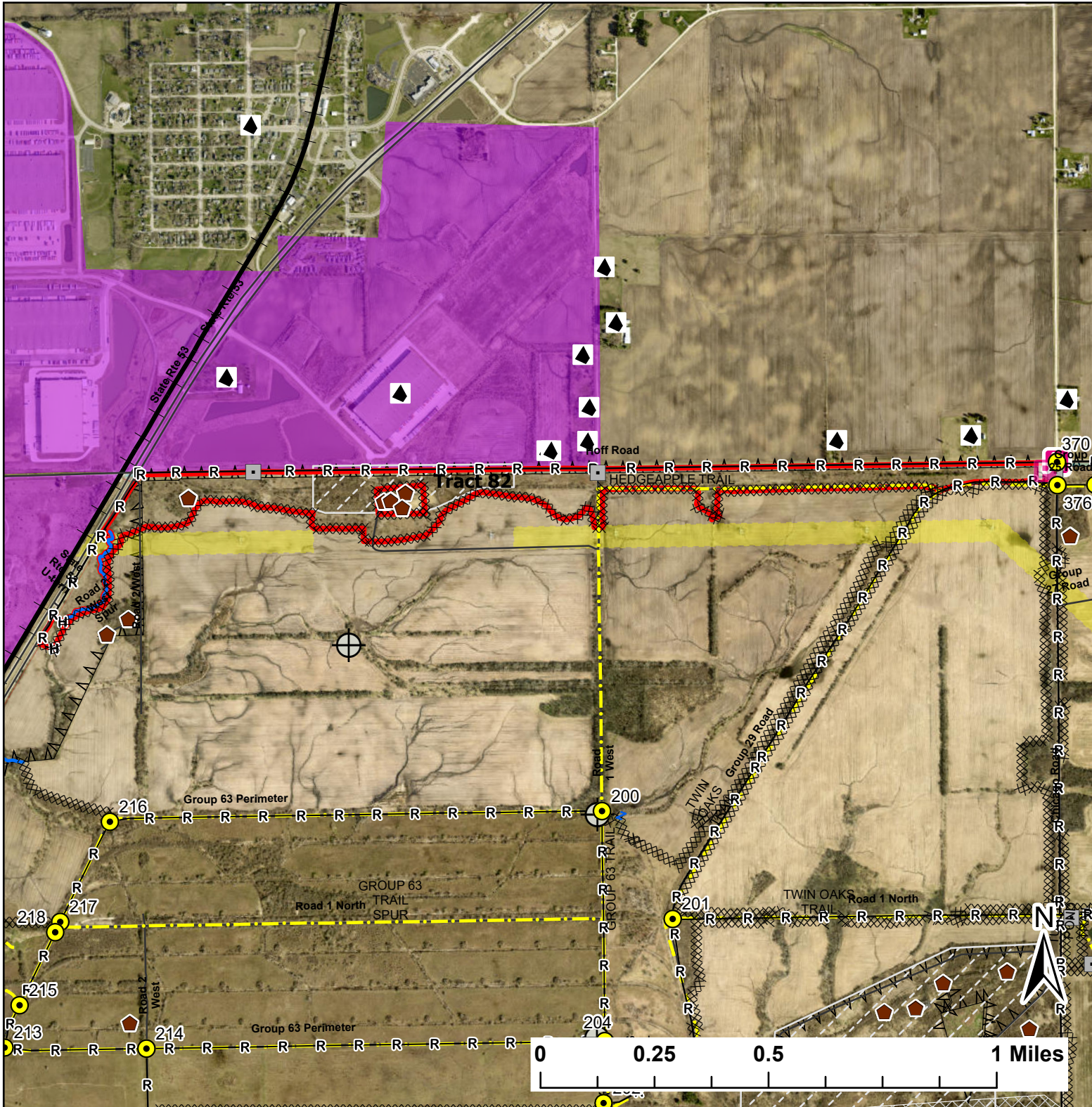


# Tract 82

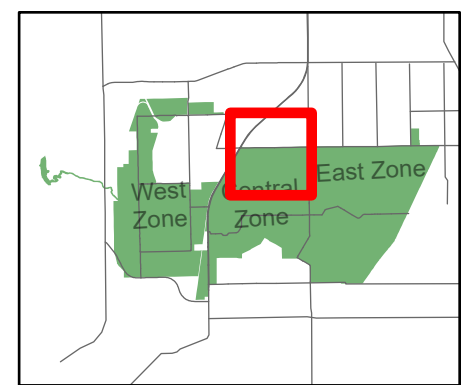
Lat:41.392601

Long:-88.101097

Acres:97.92



Legend			
	Burn Unit		Pipeline
	Buildings		Barbed Wire
	Drop Point		Chain Link
	Entry Point		Trail
	Lock/Gate		Half Mile Structures
	Parking Lot		UXO Closed Area
	Well		Adjacent Land
	Railroad		Creek As Completed Line
	Electric And Telephone Line		H- Hand Line
	High Transmission Line		Mow Line
			R- Road As Completed Line
			Wet Line
			Army Inholding
			Road



Midwin National Tallgrass Prairie  
 Prairie Supervisor's Office and Welcome Center  
 30239 S. State Route 53  
 Wilmington, IL 60481  
 Phone: (815) 423 - 6370

