

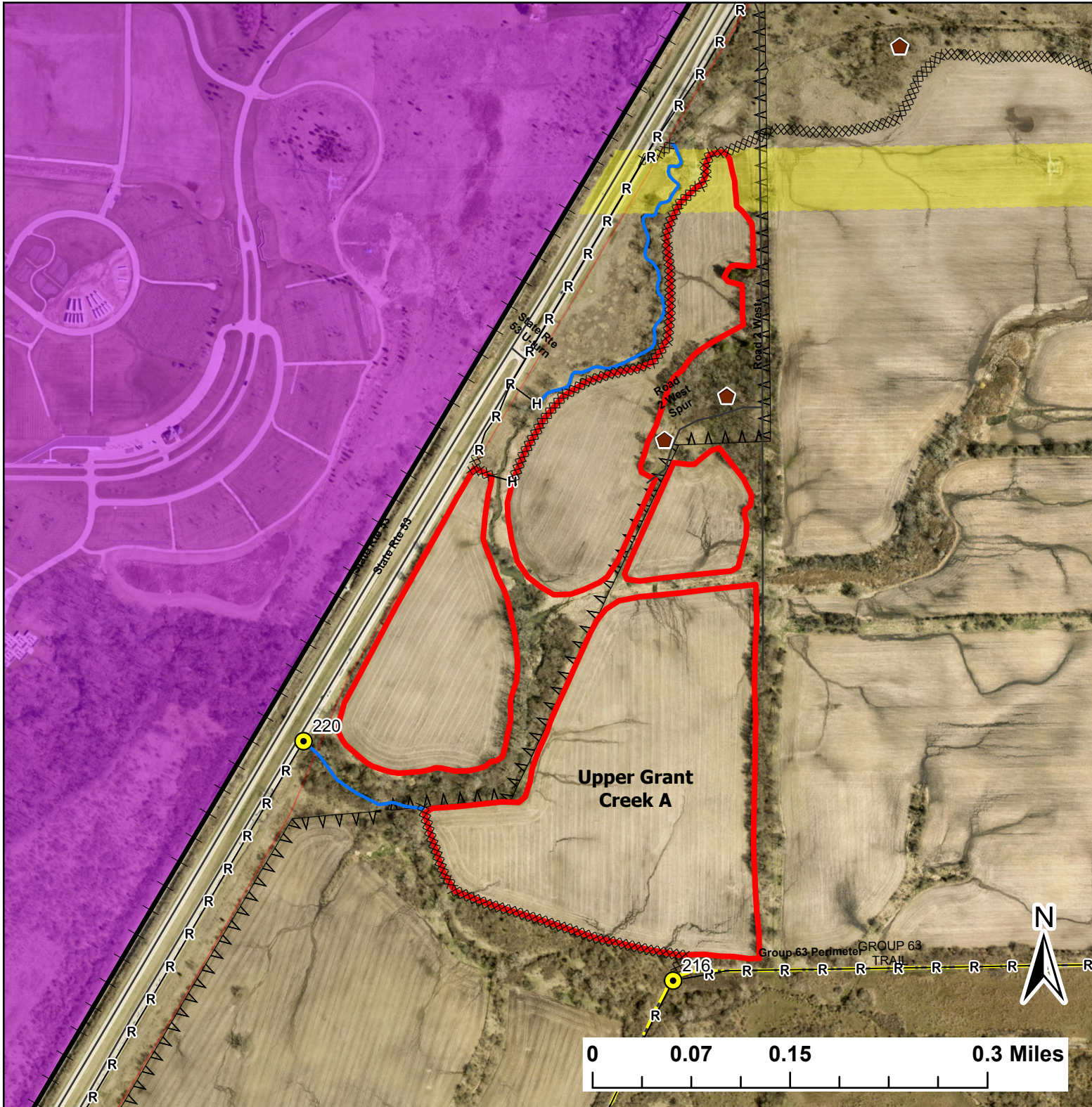
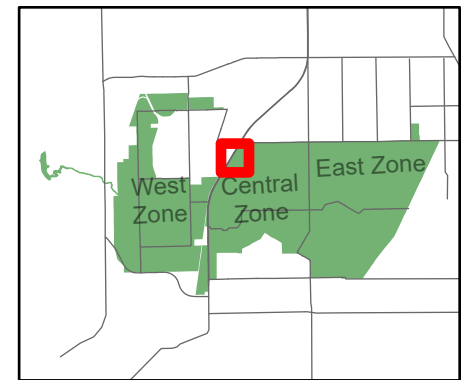
Upper Grant Creek A

Lat:41.385601
Long:-88.118301

Acres:59.90

Legend

- Burn Unit
- Buildings
- Drop Point
- Railroad
- High Transmission Line
- Pipeline
- Barbed Wire
- Chain Link
- Trail
- Adjacent Land
- Creek As Completed Line
- Hand Line
- Mow Line
- Road As Completed Line
- Road



Midwin National Tallgrass Prairie
Prairie Supervisor's Office and Welcome Center
30239 S. State Route 53
Wilmington, IL 60481
Phone: (815) 423 - 6370