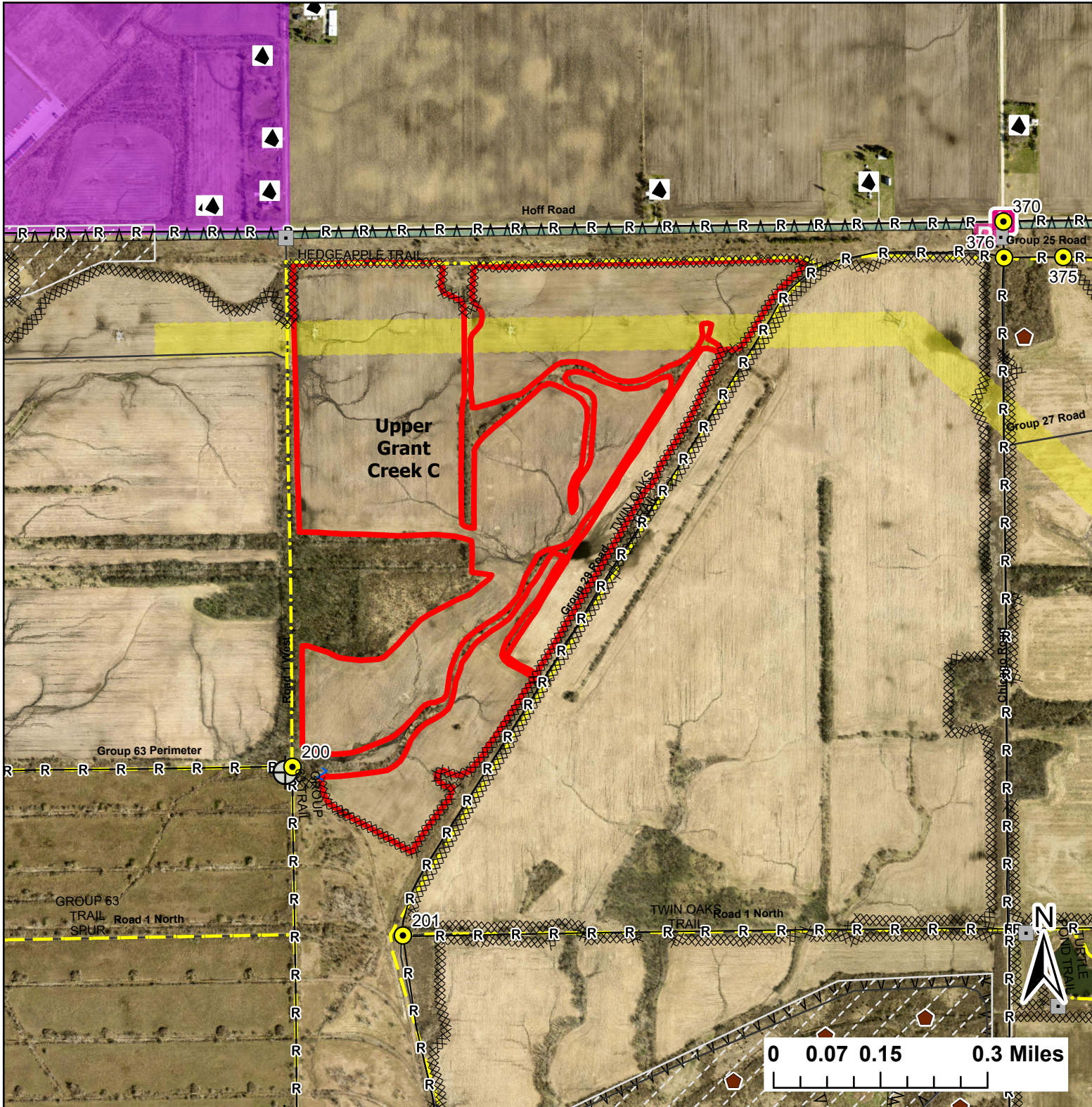


# Upper Grant Creek C

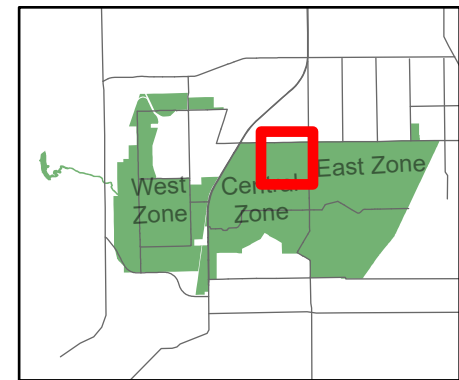
Lat:41.388599  
Long:-88.091301

Acres:180.63



**Legend**

- Burn Unit
- Buildings
- Drop Point
- Entry Point
- Lock/Gate
- Parking Lot
- Well
- Electric And Telephone Line
- High Transmission Line
- Chain Link
- Trail
- Half Mile Structures
- Adjacent Land
- Mow Line
- Road As Completed Line
- Wet Line
- Army Inholding
- Road



Midwin National Tallgrass Prairie  
Prairie Supervisor's Office and Welcome Center  
30239 S. State Route 53  
Wilmington, IL 60481  
Phone: (815) 423 - 6370