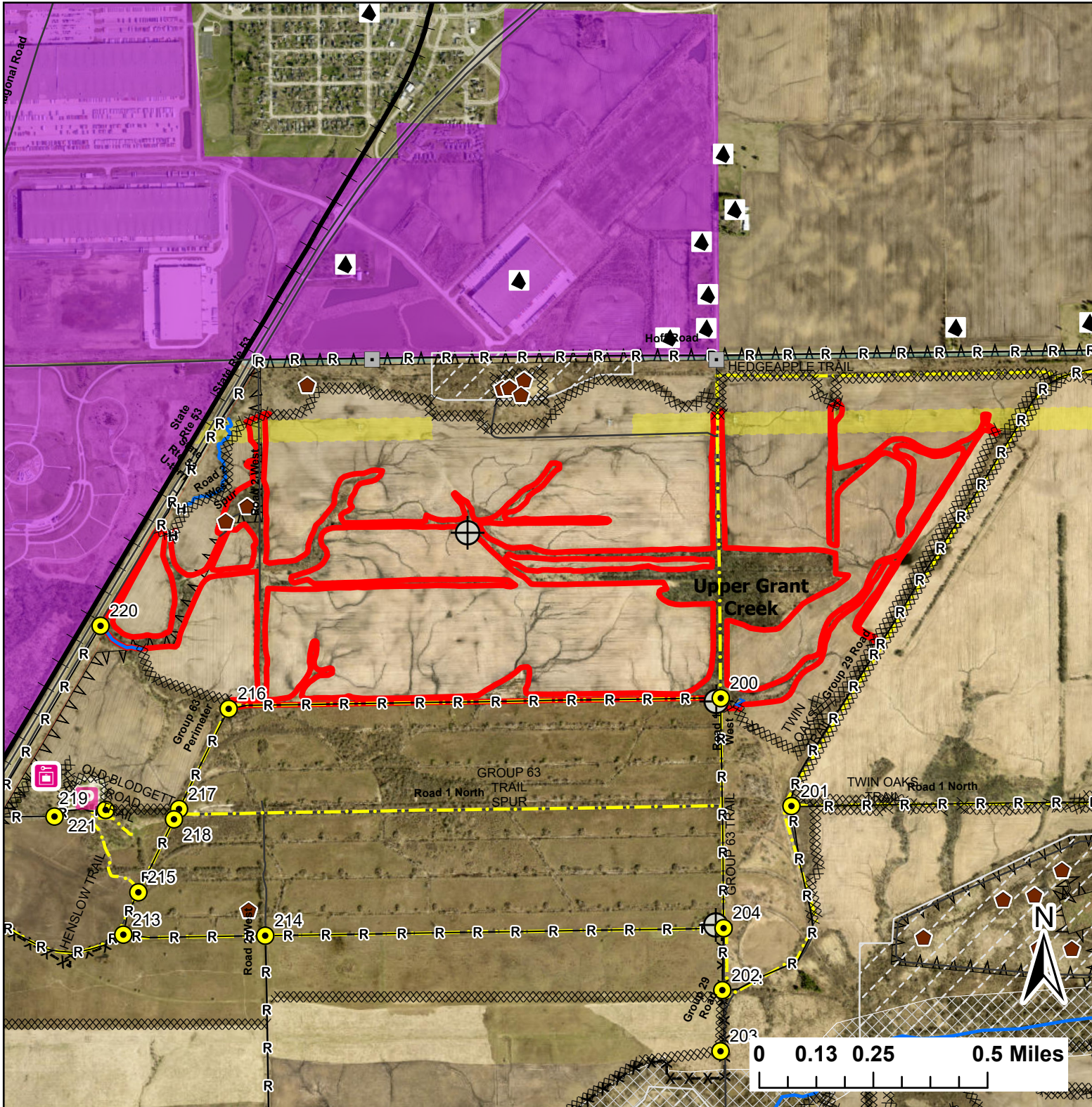


Upper Grant Creek

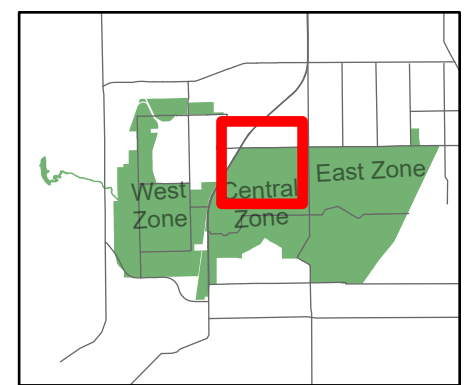
Lat:41.386299

Long:-88.103203

Acres:126.01



Legend	
Burn Unit	Pipeline
Buildings	Barbed Wire
Drop Point	Chain Link
Entry Point	Trail
Lock/Gate	Half Mile Structures
Parking Lot	Adjacent Land
Well	Creek As Completed Line
Railroad	Mow Line
Electric And Telephone Line	Road As Completed Line
High Transmission Line	Wet Line
	Army Inholding
	Road



Midwin National Tallgrass Prairie
Prairie Supervisor's Office and Welcome Center
30239 S. State Route 53
Wilmington, IL 60481
Phone: (815) 423 - 6370