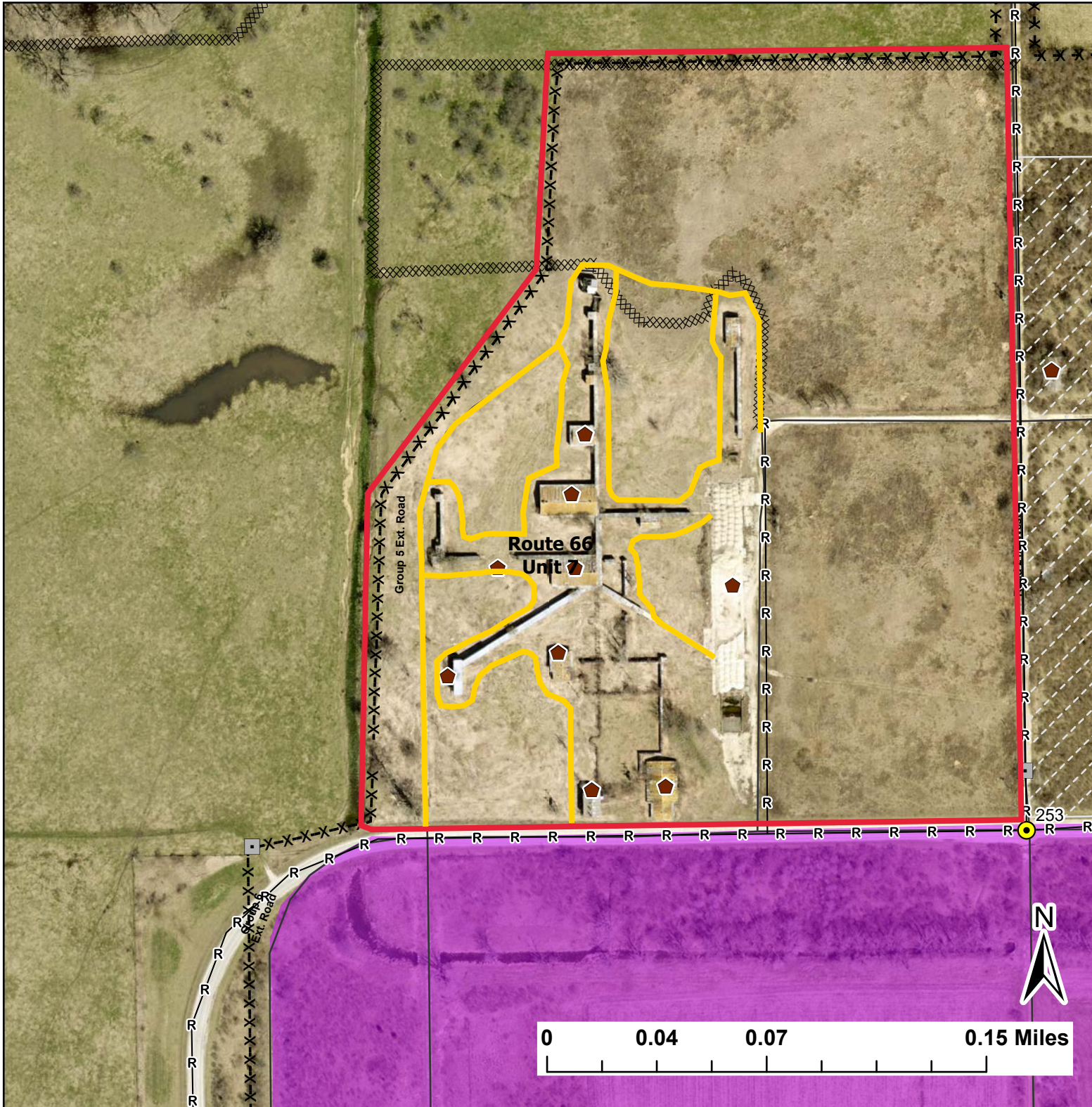


Route 66 Unit 7

Lat:41.3475
Long:-88.125504

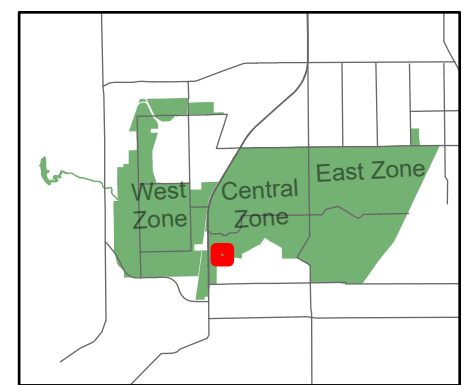
Acres:14.84



— Interior Mow Lines

Legend

- Burn Unit
- Buildings
- Drop Point
- Lock/Gate
- Barbed Wire
- Adjacent Land
- Mow Line
- Road As Completed Line
- Army Inholding
- Road



Midwin National Tallgrass Prairie
Prairie Supervisor's Office and Welcome Center
30239 S. State Route 53
Wilmington, IL 60481
Phone: (815) 423 - 6370