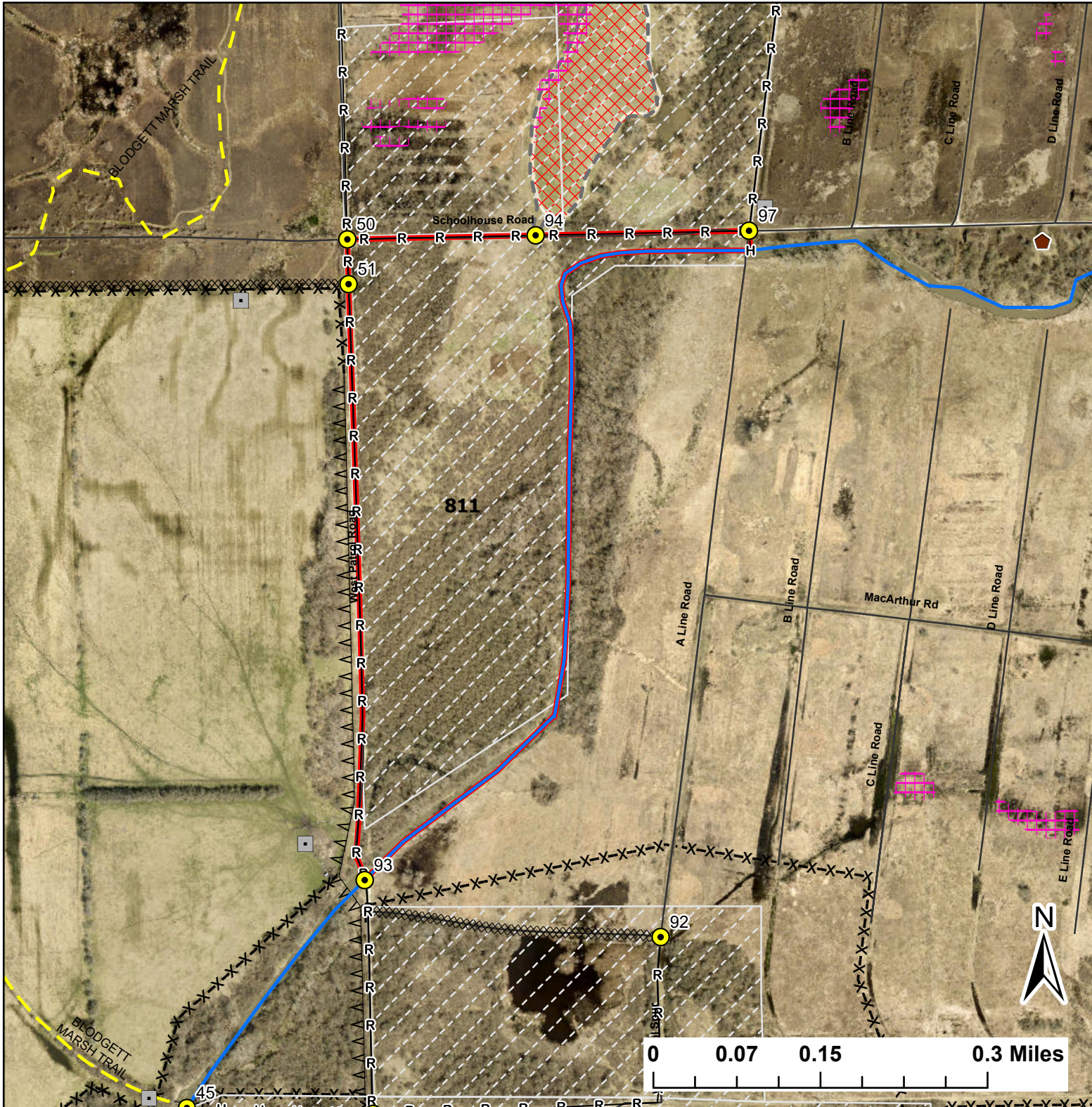


811

Lat:41.3592

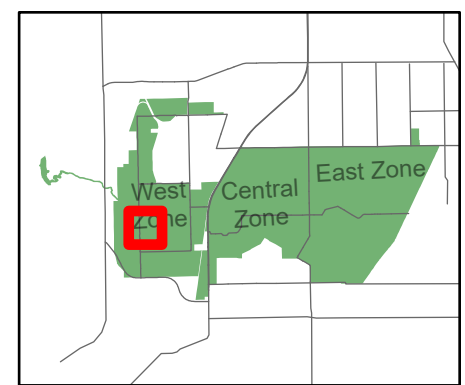
Long:-88.170799

Acres:62.84



**Legend**

- Burn Unit
- Buildings
- Drop Point
- Lock/Gate
- Barbed Wire
- Chain Link
- Trail
- Native Vegetation - Sensitive Area
- DoD Landfill Hazard
- Creek As Completed Line
- Gravel As Line
- Hand Line
- Mow Line
- Road As Completed Line
- Army Inholding
- Road



Midwin National Tallgrass Prairie  
 Prairie Supervisor's Office and Welcome Center  
 30239 S. State Route 53  
 Wilmington, IL 60481  
 Phone: (815) 423 - 6370