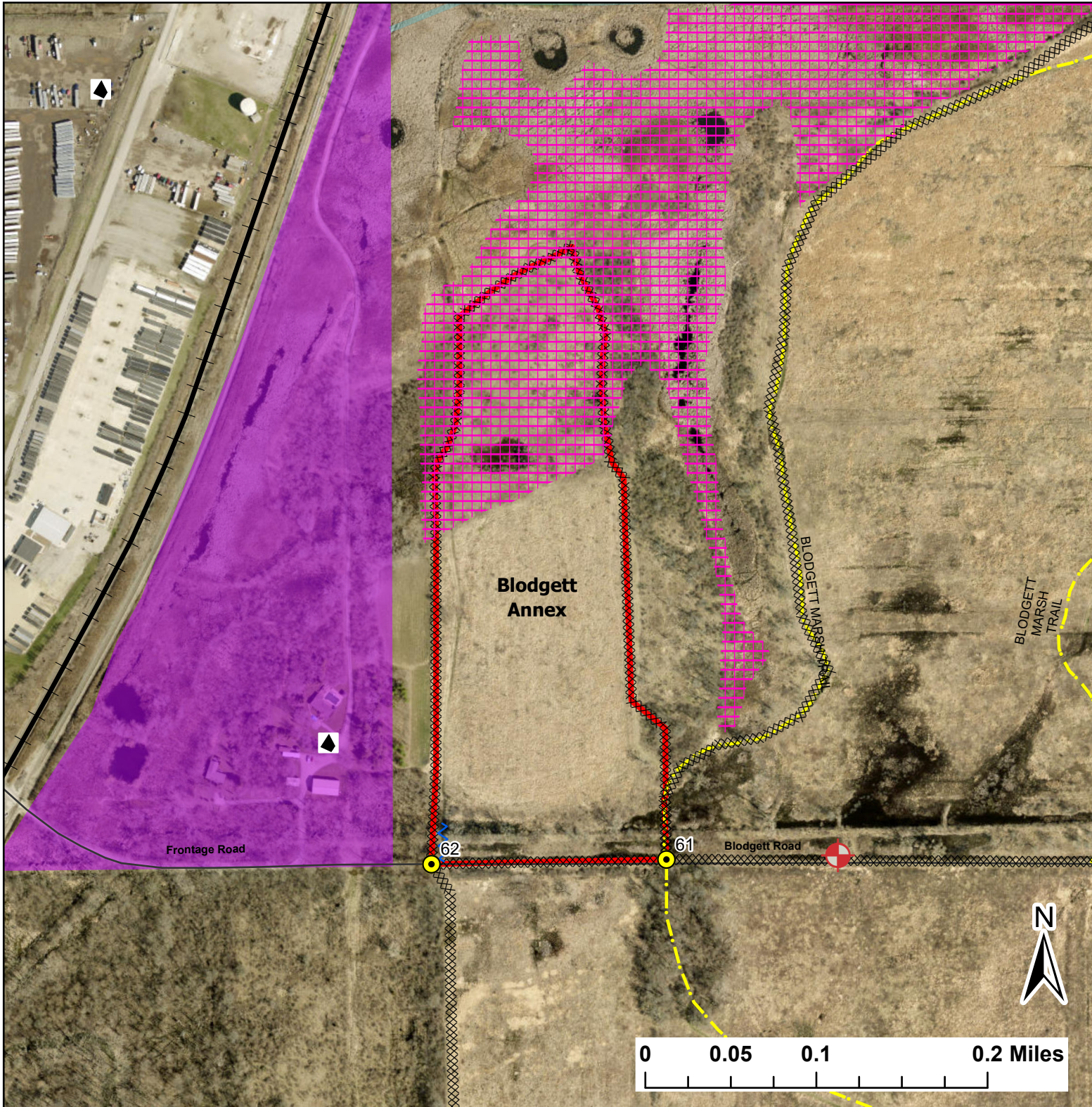


Blodgett Annex

Lat:41.379299

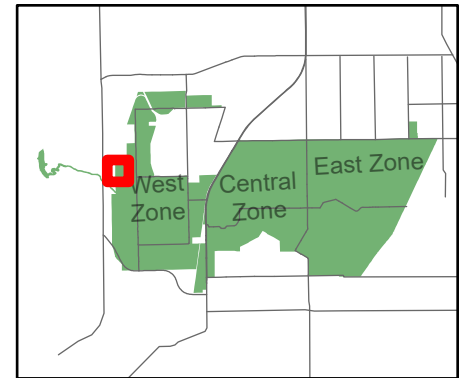
Long:-88.184097

Acres:23.88



Legend

- Burn Unit
- Drop Point
- Army Deep Well
- Railroad
- Electric And Telephone Line
- Trail
- Half Mile Structures
- Native Vegetation - Sensitive Area
- Adjacent Land
- Mow Line
- Wet Line
- Road



Midwin National Tallgrass Prairie
Prairie Supervisor's Office and Welcome Center
30239 S. State Route 53
Wilmington, IL 60481
Phone: (815) 423 - 6370