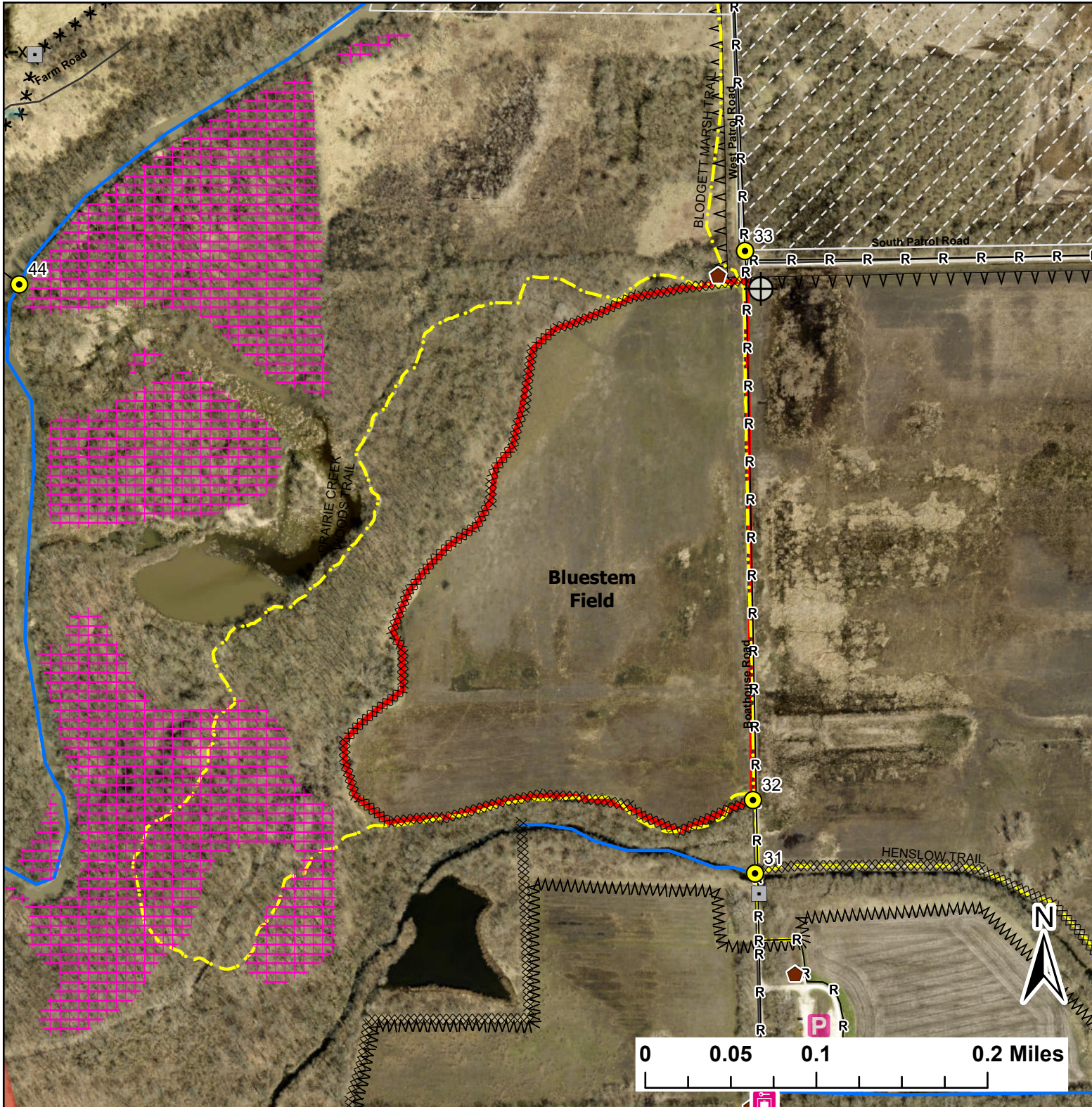


# Bluestem Field

Lat:41.345402

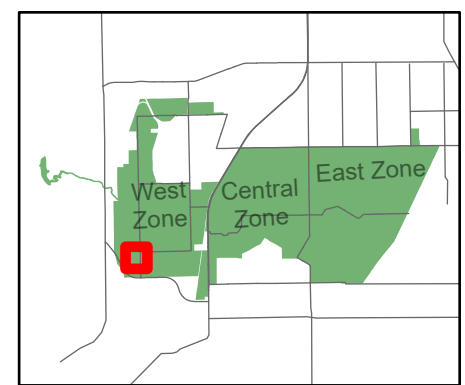
Long:-88.173599

Acres:33.73



**Legend**

- Burn Unit
- Buildings
- Drop Point
- Entry Point
- Lock/Gate
- Parking Lot
- Well
- Electric And Telephone Line
- Pipeline
- X Barbed Wire
- Chain Link
- Woven Wire
- Trail
- Native Vegetation - Sensitive Area
- Creek As Completed Line
- H- Hand Line
- XX Mow Line
- R- Road As Completed Line
- Army Inholding
- Road



Midwin National Tallgrass Prairie  
Prairie Supervisor's Office and Welcome Center  
30239 S. State Route 53  
Wilmington, IL 60481  
Phone: (815) 423 - 6370