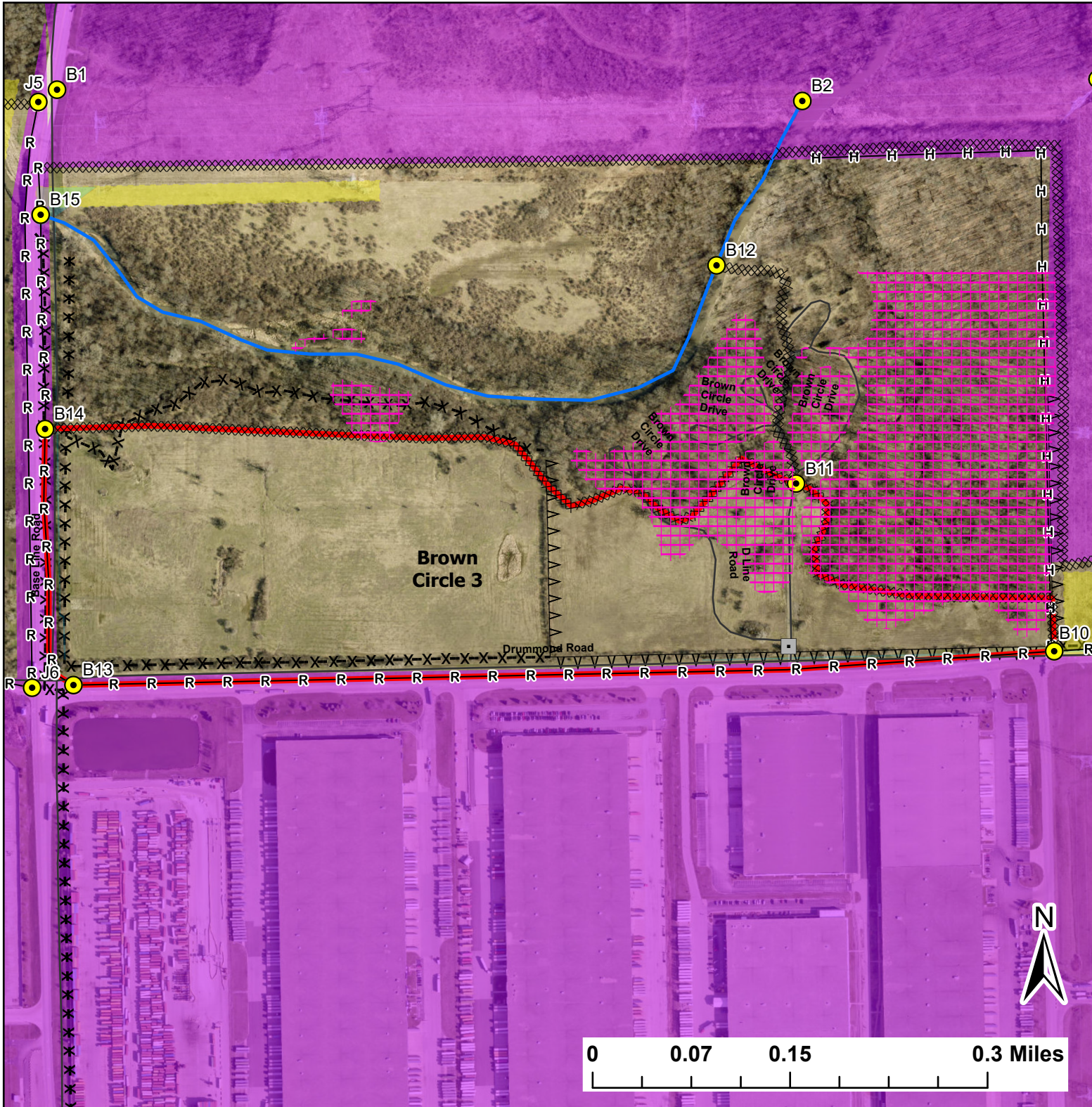


Brown Circle 3

Lat:41.408001

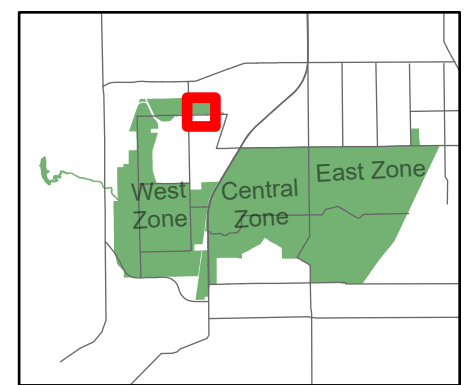
Long:-88.139999

Acres:69.25



Legend

- Burn Unit
- Drop Point
- Lock/Gate
- Electric And Telephone Line
- High Transmission Line
- Barbed Wire
- Chain Link
- Native Vegetation - Sensitive Area
- Adjacent Land
- Alt Hand Line
- Creek As Completed Line
- Mow Line
- Road As Completed Line
- Road



Midwin National Tallgrass Prairie
Prairie Supervisor's Office and Welcome Center
30239 S. State Route 53
Wilmington, IL 60481
Phone: (815) 423 - 6370