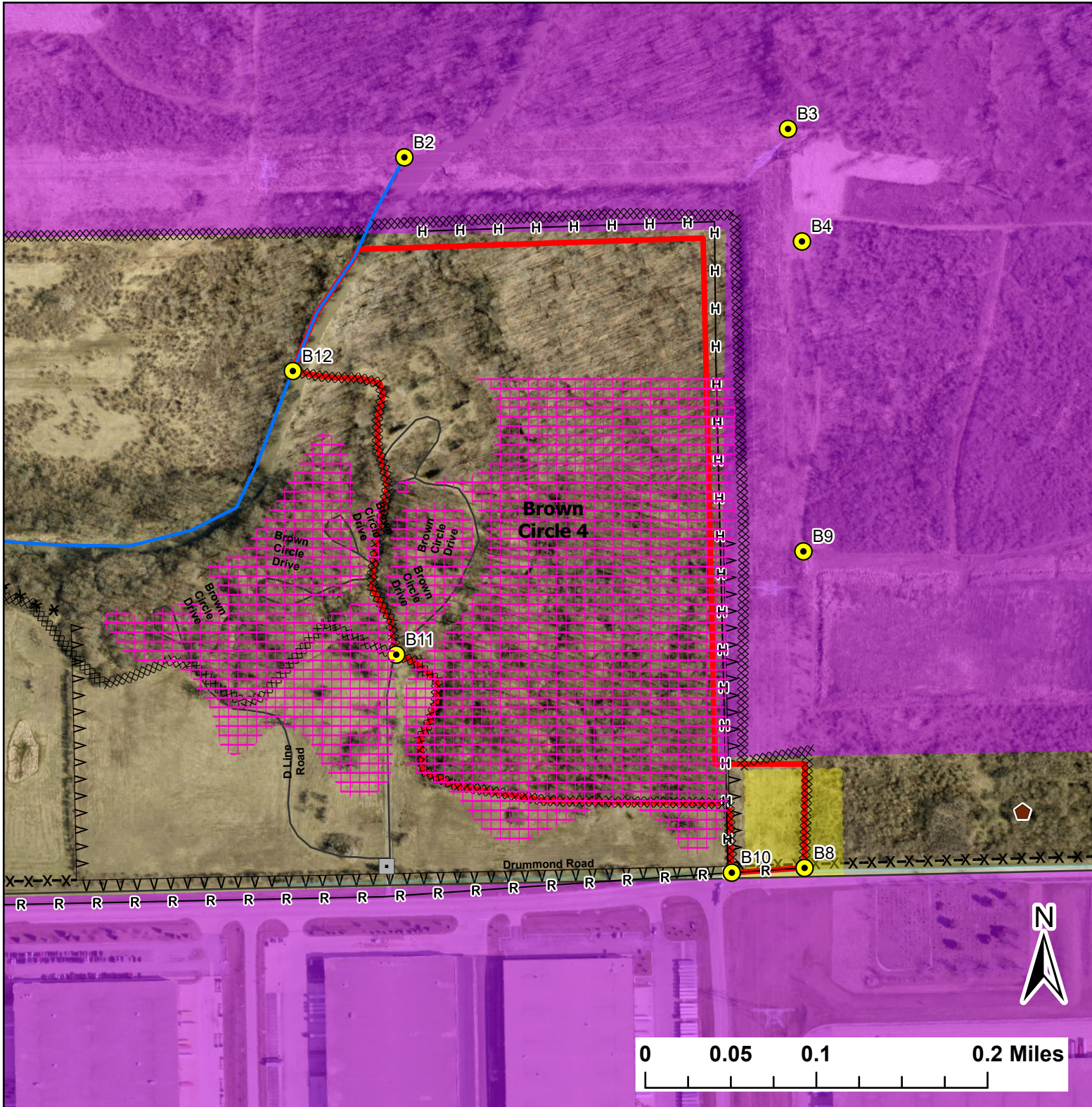


# Brown Circle 4

Lat:41.410198

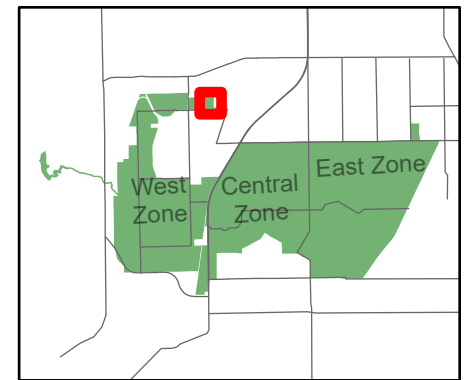
Long:-88.133202

Acres:41.87



### Legend

- Burn Unit
- Buildings
- Drop Point
- Lock/Gate
- Electric And Telephone Line
- HighTransmission Line
- Barbed Wire
- Chain Link
- Native Vegetation - Sensitive Area
- Adjacent Land
- Alt Hand Line
- Creek As Completed Line
- Mow Line
- Road As Completed Line
- Road



Midwin National Tallgrass Prairie  
Prairie Supervisor's Office and Welcome Center  
30239 S. State Route 53  
Wilmington, IL 60481  
Phone: (815) 423 - 6370