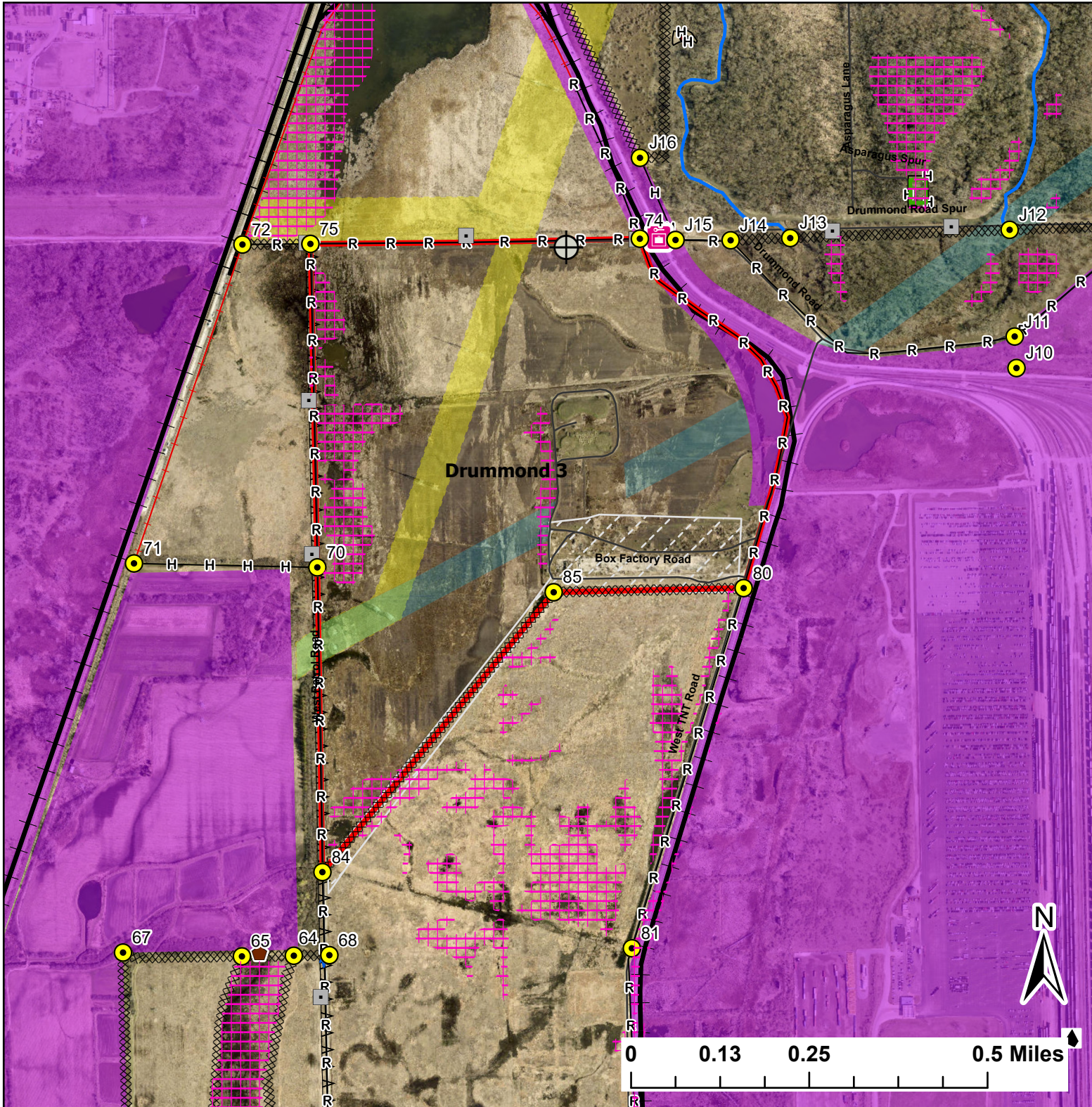


Drummond 3

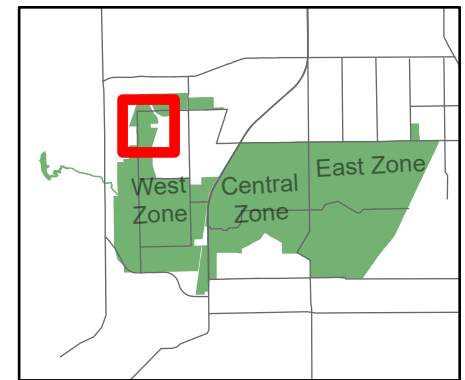
Lat:41.401501
Long:-88.169403

Acres:230.47



Legend

- Burn Unit
- Buildings
- Cemetery
- Corral
- Drop Point
- Entry Point
- Lock/Gate
- Well
- Railroad
- Electric And Telephone Line
- High Transmission Line
- Chain Link
- Half Mile Structures
- Native Vegetation - Sensitive Area
- Adjacent Land
- Creek As Completed Line
- Hand Line
- Mow Line
- Railroad As Completed Line
- Road As Completed Line
- Wet Line
- Army Inholding
- Road



Midwin National Tallgrass Prairie
Prairie Supervisor's Office and Welcome Center
30239 S. State Route 53
Wilmington, IL 60481
Phone: (815) 423 - 6370