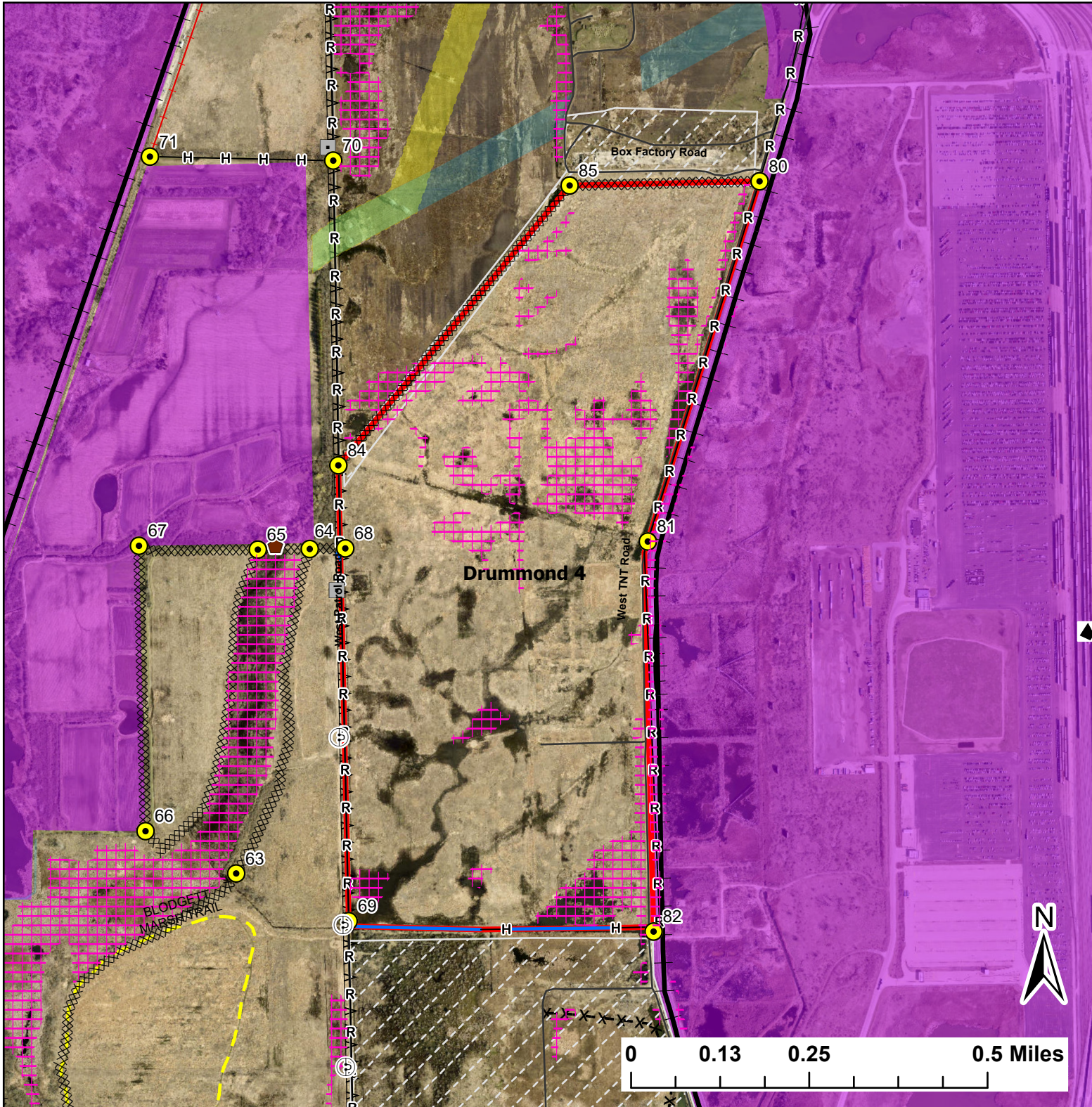


Drummond 4

Lat:41.391102

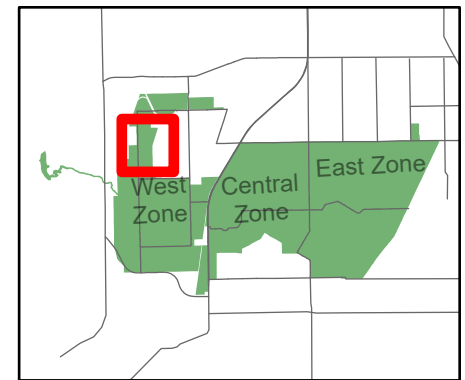
Long:-88.169197

Acres:271.57



Legend

- Burn Unit
- Buildings
- Drop Point
- Hole In Fence
- Lock/Gate
- Railroad
- Electric And Telephone Line
- High Transmission Line
- Barbed Wire
- Chain Link
- Trail
- Half Mile Structures
- Native Vegetation - Sensitive Area
- Adjacent Land
- Creek As Completed Line
- Hand Line
- Mow Line
- Railroad As Completed Line
- Road As Completed Line
- Wet Line
- Army Inholding
- Road



Midwin National Tallgrass Prairie
Prairie Supervisor's Office and Welcome Center
30239 S. State Route 53
Wilmington, IL 60481
Phone: (815) 423 - 6370

