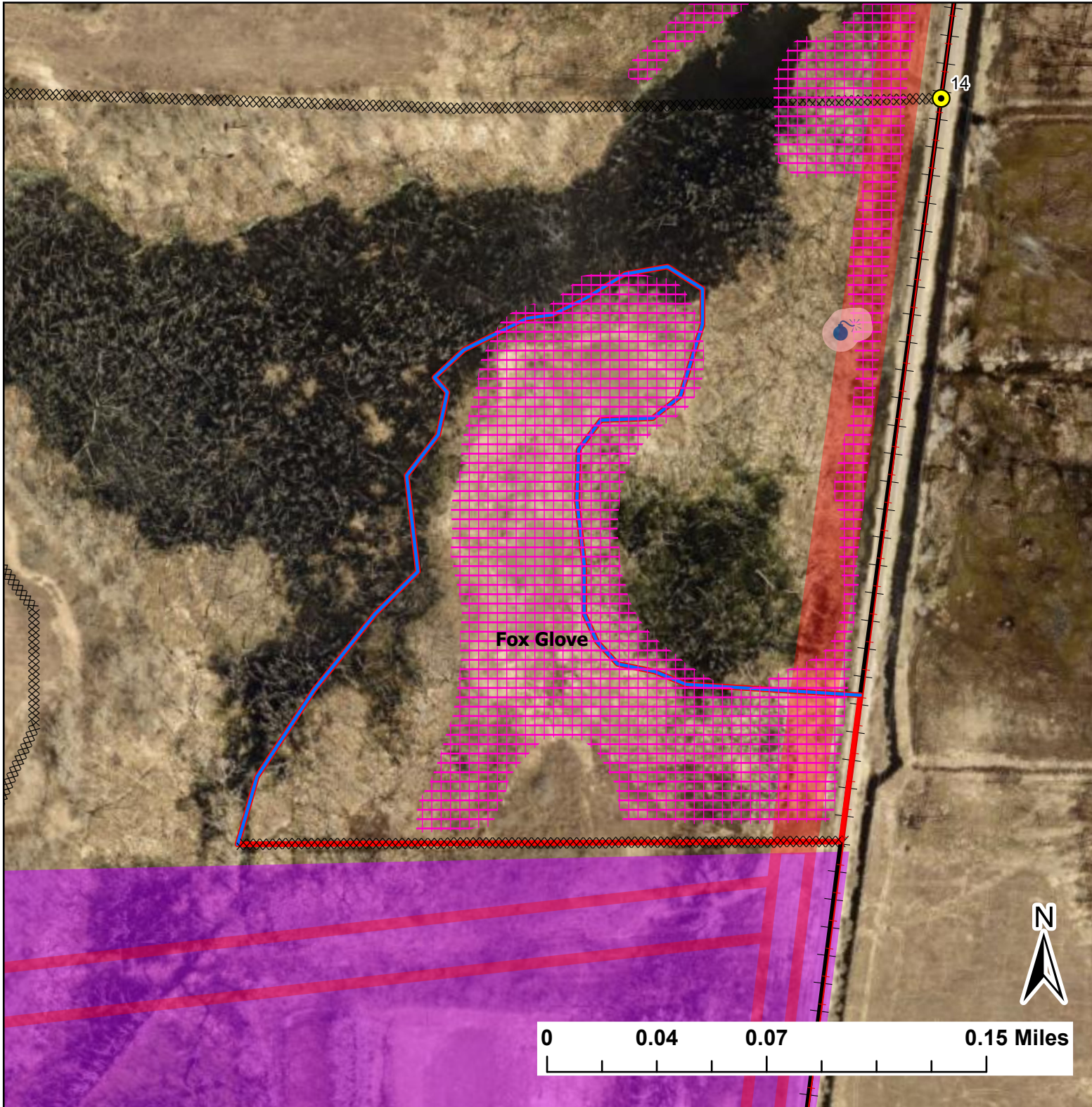


Fox Glove

Lat:41.339199

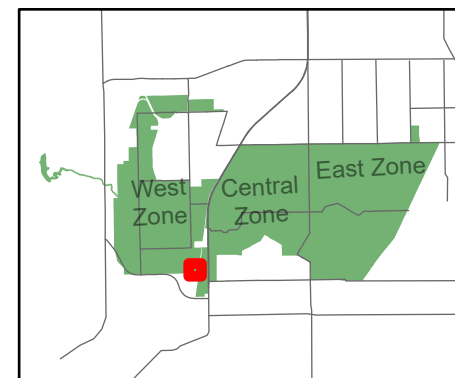
Long:-88.1408

Acres:12.75



Legend

- Burn Unit
- Drop Point
- Railroad
- Pipeline
- Eagles Nests - Sensitive Area
- Native Vegetation - Sensitive Area
- Adjacent Land
- Creek As Completed Line
- Mow Line
- Railroad As Completed Line



Midwin National Tallgrass Prairie
Prairie Supervisor's Office and Welcome Center
30239 S. State Route 53
Wilmington, IL 60481
Phone: (815) 423 - 6370