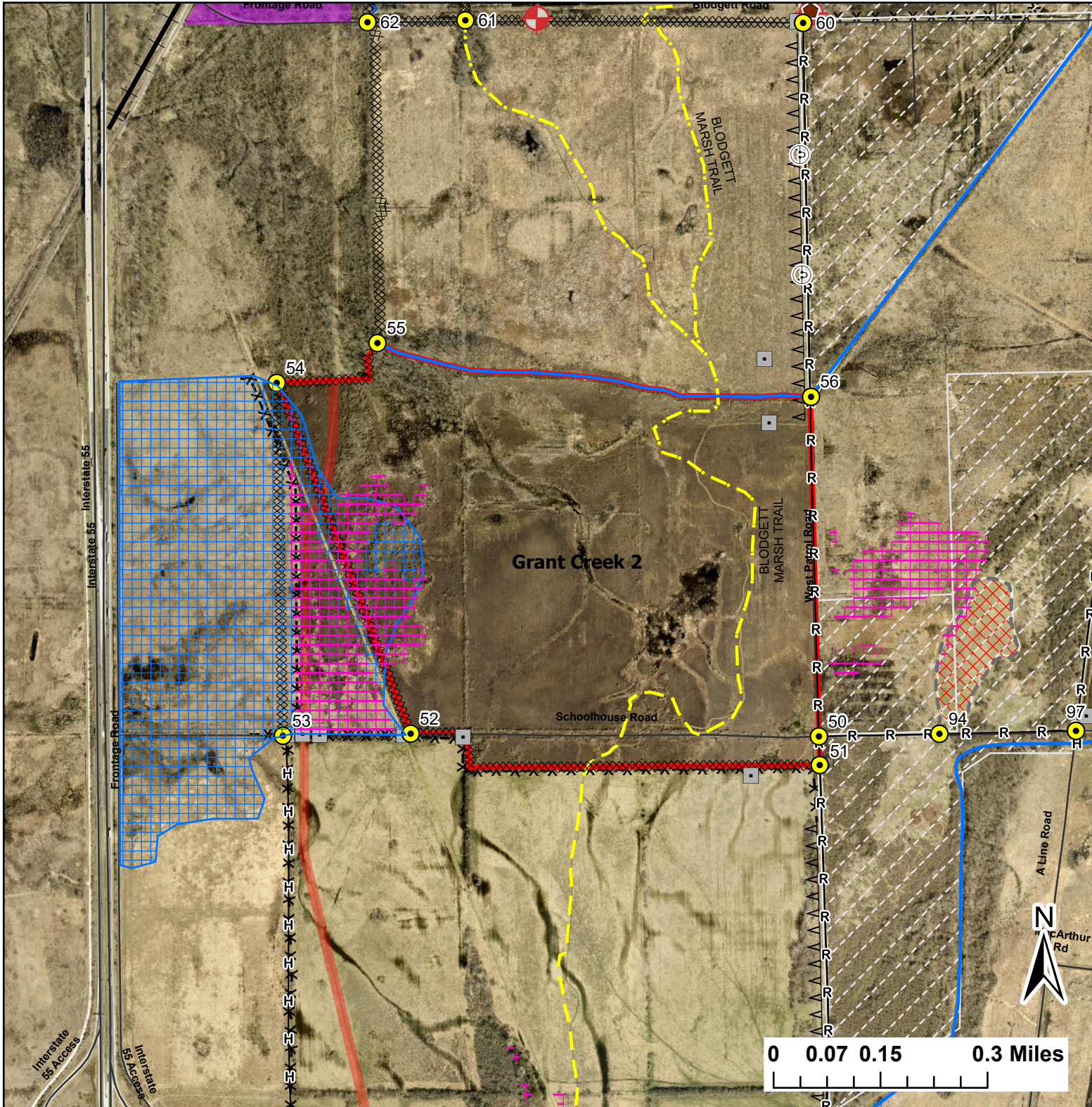


Grant Creek 2

Lat:41.3661

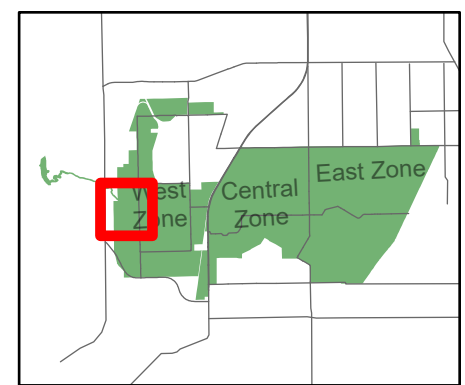
Long:-88.179398

Acres:224.48



Legend

- Burn Unit
- Buildings
- Drop Point
- Hole In Fence
- Lock/Gate
- Army Deep Well
- Railroad
- Pipeline
- Barbed Wire
- Chain Link
- Trail
- Native Vegetation - Sensitive Area
- Critical Insect Habitat - Sensitive Area
- DoD Landfill Hazard
- Adjacent Land
- Creek As Completed Line
- Gravel As Line
- H- Hand Line
- X- Mow Line
- R- Road As Completed Line
- Wet Line
- Army Inholding
- Road



Midwin National Tallgrass Prairie
Prairie Supervisor's Office and Welcome Center
30239 S. State Route 53
Wilmington, IL 60481
Phone: (815) 423 - 6370