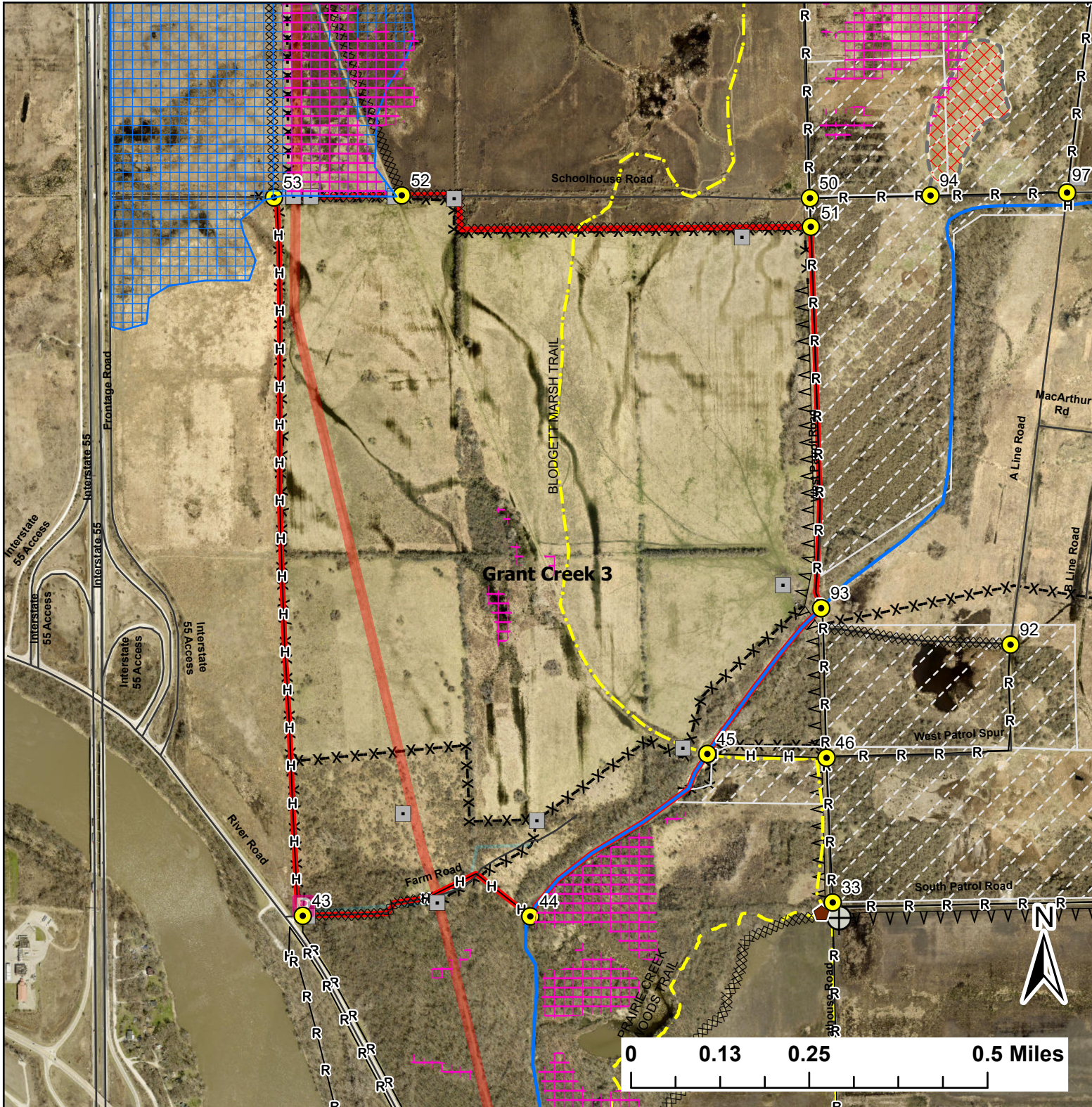


Grant Creek 3

Lat:41.355801

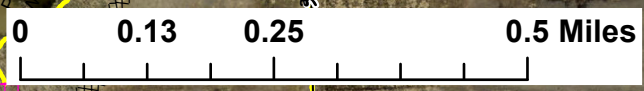
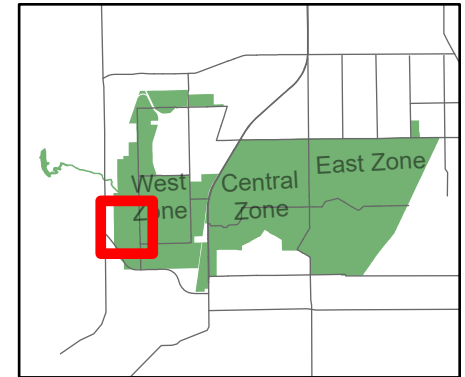
Long:-88.180298

Acres:413.70



Legend

- Burn Unit
- Buildings
- Drop Point
- Lock/Gate
- P Parking Lot
- Well
- Electric And Telephone Line
- Pipeline
- X- Barbed Wire
- A- Chain Link
- Trail
- H Native Vegetation - Sensitive Area
- Critical Insect Habitat - Sensitive Area
- X DoD Landfill Hazard
- Creek As Completed Line
- Gravel As Line
- H Hand Line
- X Mow Line
- R Road As Completed Line
- Army Inholding
- Road



Midwin National Tallgrass Prairie
 Prairie Supervisor's Office and Welcome Center
 30239 S. State Route 53
 Wilmington, IL 60481
 Phone: (815) 423 - 6370