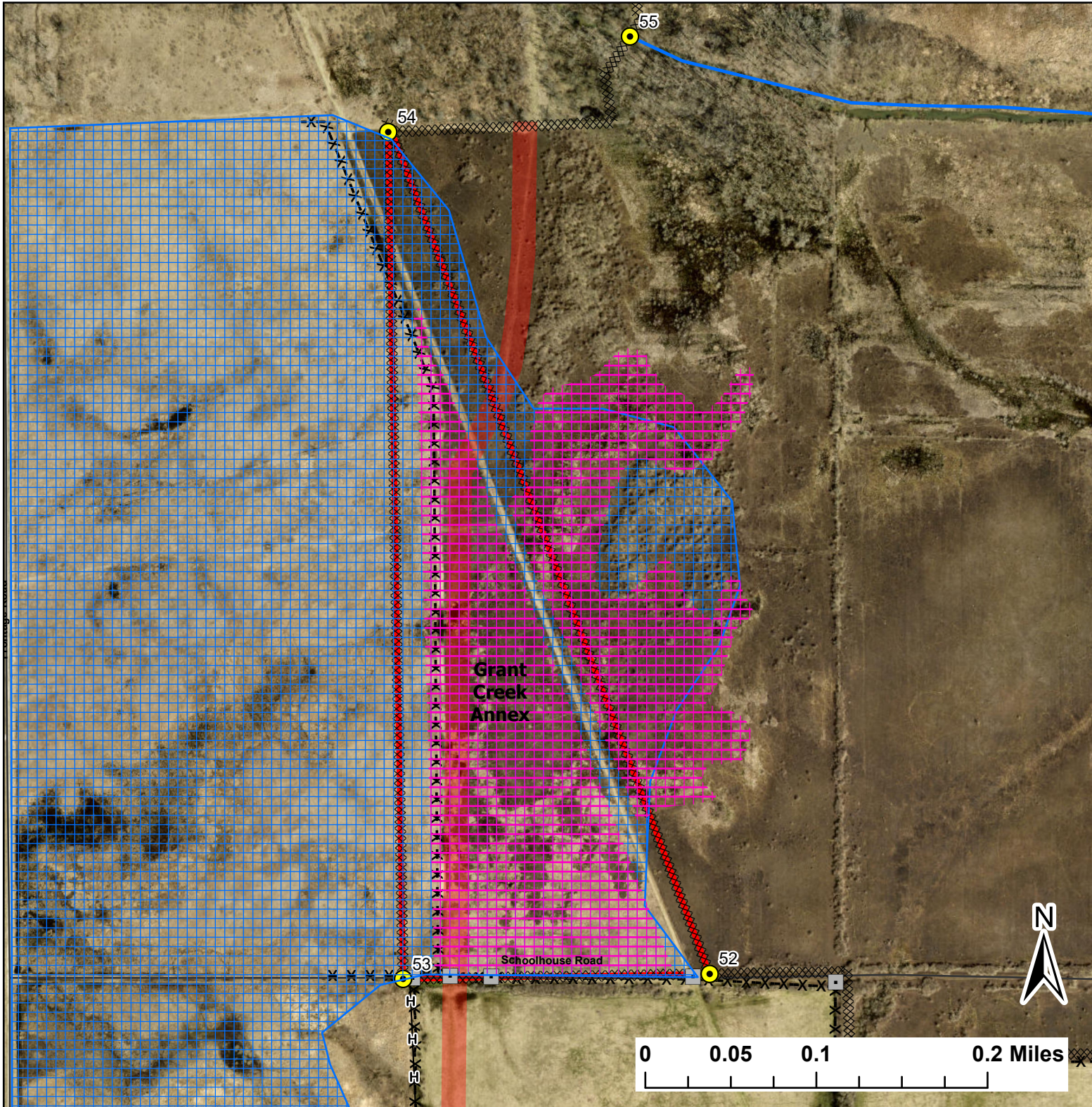


# Grant Creek Annex

Lat:41.364899

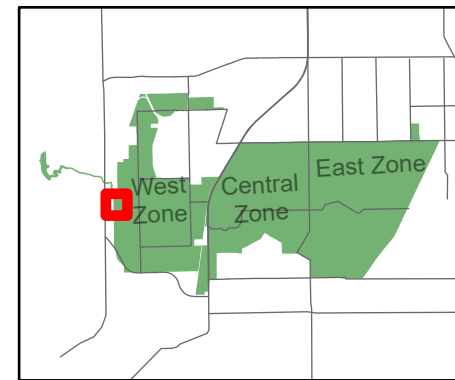
Long:-88.186203

Acres:28.74



## Legend

- Burn Unit
- Drop Point
- Lock/Gate
- Pipeline
- Barbed Wire
- Native Vegetation - Sensitive Area
- Critical Insect Habitat - Sensitive Area
- Creek As Completed Line
- Hand Line
- Mow Line
- Road



0 0.05 0.1 0.2 Miles



Midwin National Tallgrass Prairie  
Prairie Supervisor's Office and Welcome Center  
30239 S. State Route 53  
Wilmington, IL 60481  
Phone: (815) 423 - 6370