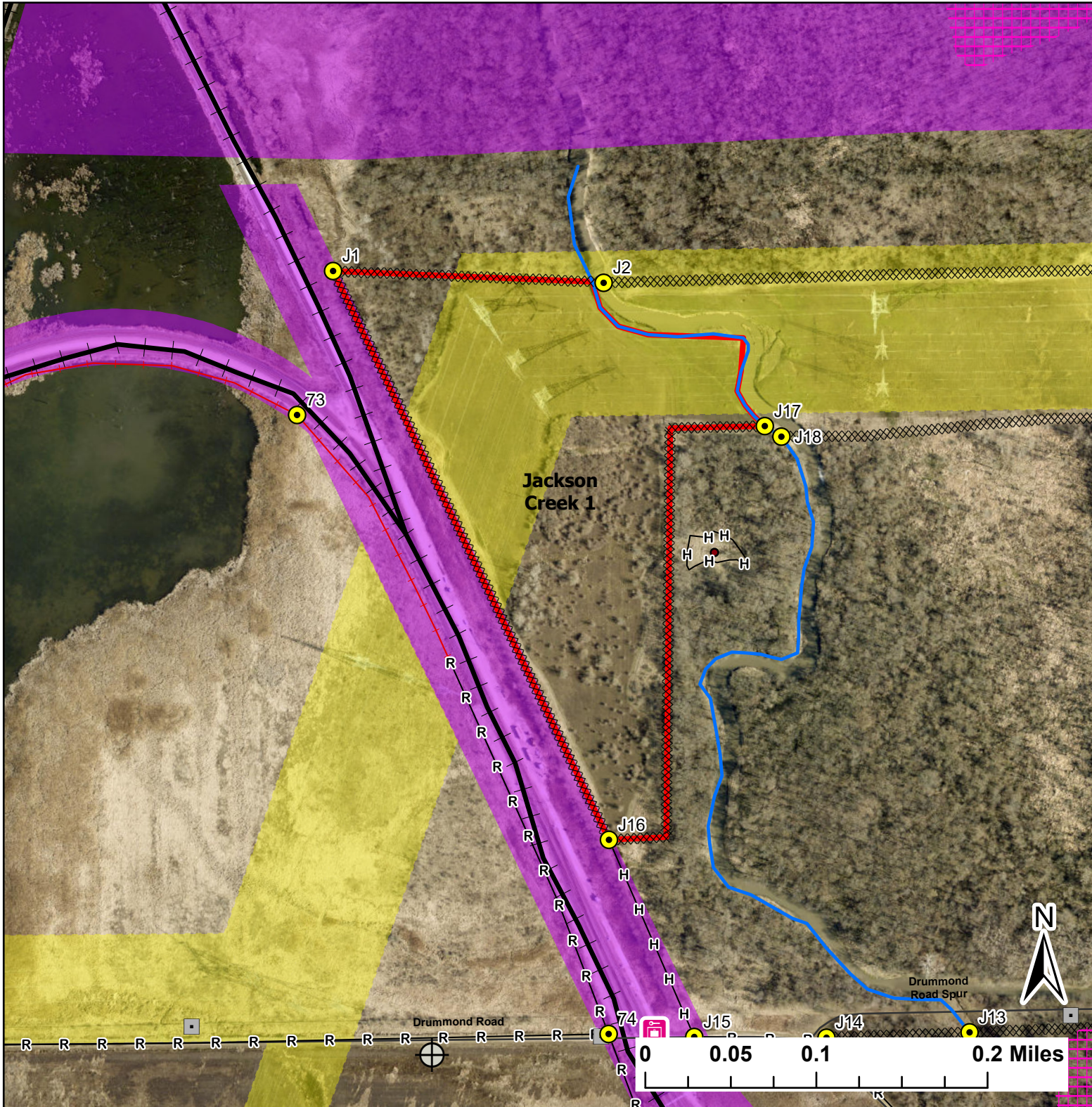


Jackson Creek 1

Lat:41.410801

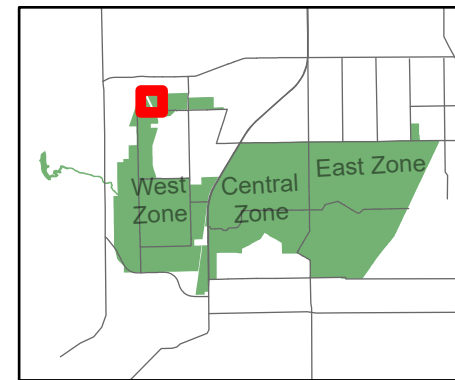
Long:-88.166496

Acres:24.82



Legend

- Burn Unit
- Corral
- Drop Point
- Entry Point
- Lock/Gate
- Well
- Railroad
- High Transmission Line
- Native Vegetation - Sensitive Area
- Adjacent Land
- Creek As Completed Line
- Hand Line
- Mow Line
- Railroad As Completed Line
- Road As Completed Line
- Road



Midwin National Tallgrass Prairie
Prairie Supervisor's Office and Welcome Center
30239 S. State Route 53
Wilmington, IL 60481
Phone: (815) 423 - 6370