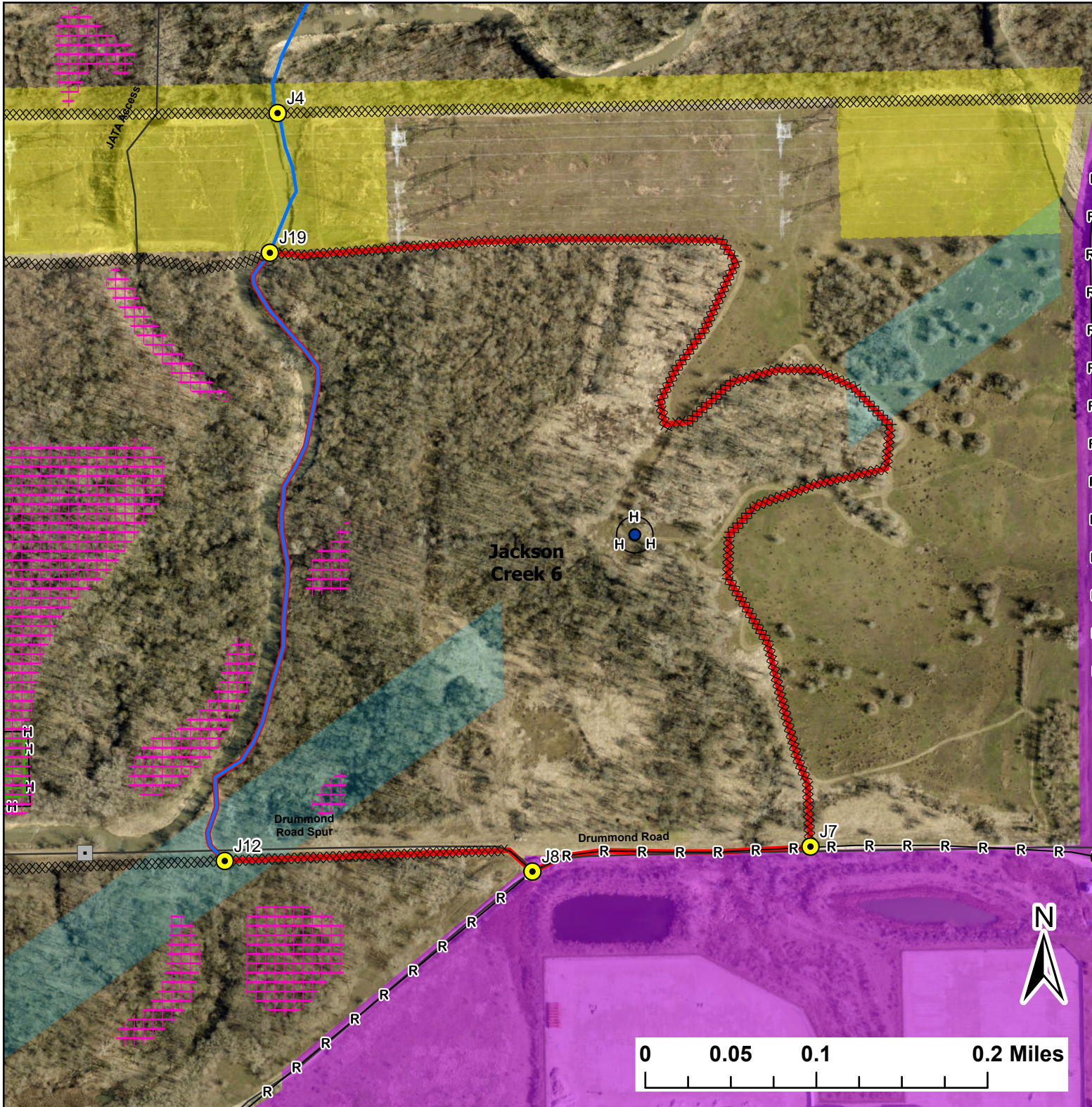


Jackson Creek 6

Lat:41.4091

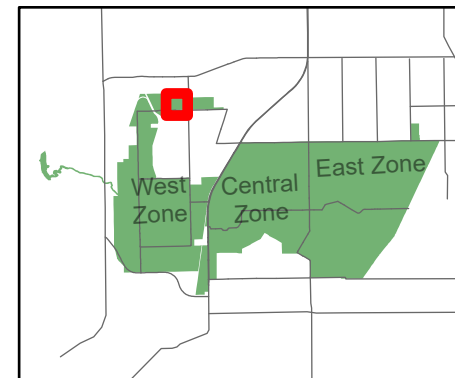
Long:-88.152603

Acres:66.85



Legend

- Burn Unit
- Cemetery
- Drop Point
- Lock/Gate
- Trash Area
- Electric And Telephone Line
- HighTransmission Line
- Native Vegetation - Sensitive Area
- Adjacent Land
- Creek As Completed Line
- Hand Line
- Mow Line
- Road As Completed Line
- Road



Midwin National Tallgrass Prairie
Prairie Supervisor's Office and Welcome Center
30239 S. State Route 53
Wilmington, IL 60481
Phone: (815) 423 - 6370