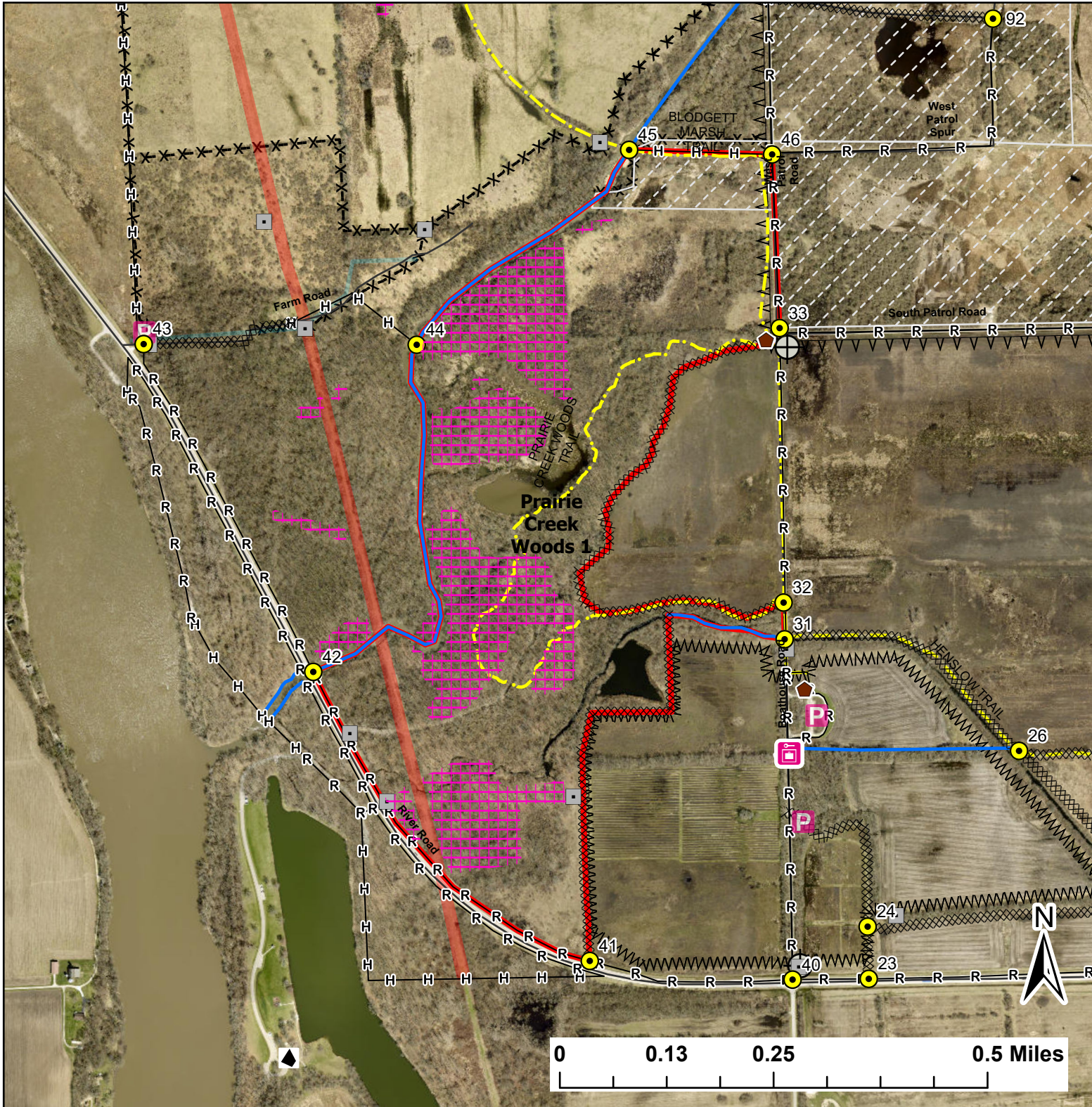


Prairie Creek Woods 1

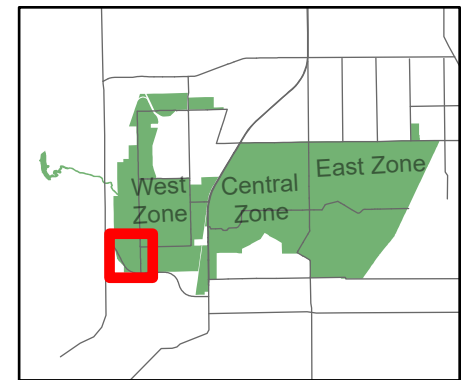
Lat:41.344898
Long:-88.177002

Acres:156.92



Legend

- Burn Unit
- Buildings
- Drop Point
- Entry Point
- Lock/Gate
- Parking Lot
- Well
- Electric And Telephone Line
- Pipeline
- Barbed Wire
- Chain Link
- Woven Wire
- Trail
- Half Mile Structures
- Native Vegetation - Sensitive Area
- Creek As Completed Line
- Hand Line
- Mow Line
- Road As Completed Line
- Road
- Army Inholding



Midwin National Tallgrass Prairie
Prairie Supervisor's Office and Welcome Center
30239 S. State Route 53
Wilmington, IL 60481
Phone: (815) 423 - 6370